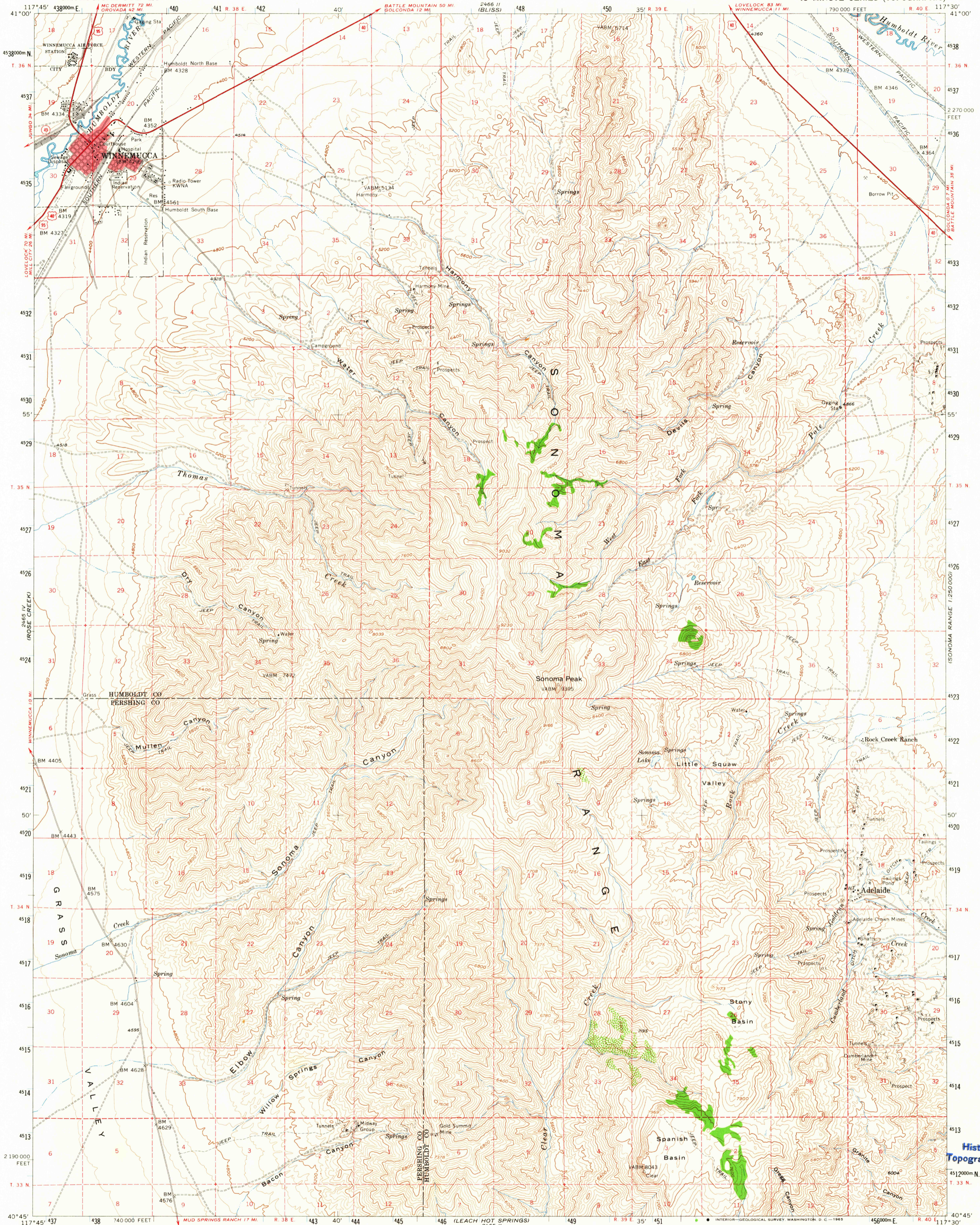


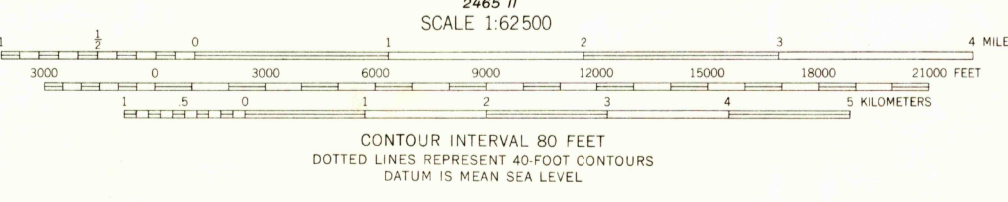
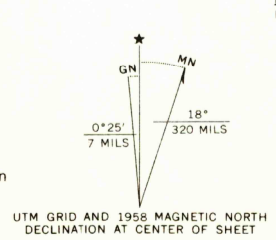
UNITED STATES  
DEPARTMENT OF THE INTERIOR  
GEOLOGICAL SURVEY

WINNEMUCCA QUADRANGLE  
NEVADA  
15 MINUTE SERIES (TOPOGRAPHIC)

2465 III  
(OSG6000 MTS.)



Mapped, edited, and published by the Geological Survey  
Control by USGS and USC&GS  
Topography from aerial photographs by photogrammetric methods  
Aerial photographs taken 1954. Field check 1958  
Polyconic projection. 1927 North American datum  
10,000-foot grid based on Nevada coordinate system, west zone  
1000-meter Universal Transverse Mercator grid ticks,  
zone 11, shown in blue  
Red tint indicates areas in which only landmark buildings are shown  
Dashed land lines indicate approximate locations  
Unchecked elevations are shown in brown



ROAD CLASSIFICATION

Heavy-duty	Light-duty
Unimproved dirt	State Route

U.S.G.S. TOPOGRAPHIC DIVISION

FILE COPY

QUADRANGLE LOCATION

WINNEMUCCA, NEV.  
N4045—W11730/15

1958  
AMS 2465 I—SERIES V796

2935  
MAY 12 1965

THIS MAP COMPLIES WITH NATIONAL MAP ACCURACY STANDARDS  
FOR SALE BY U. S. GEOLOGICAL SURVEY, DENVER 25, COLORADO OR WASHINGTON 25, D. C.  
A FOLDER DESCRIBING TOPOGRAPHIC MAPS AND SYMBOLS IS AVAILABLE ON REQUEST