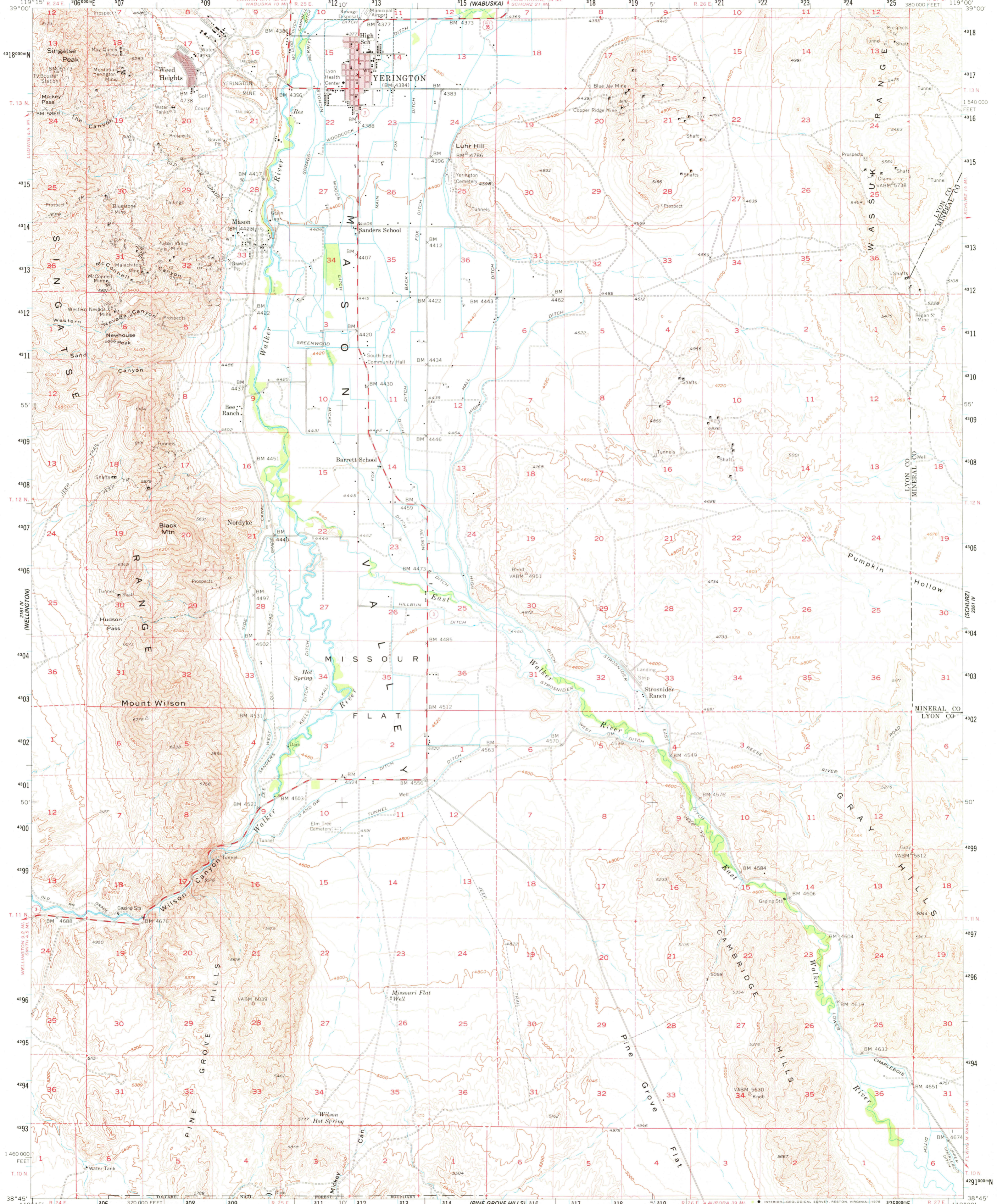
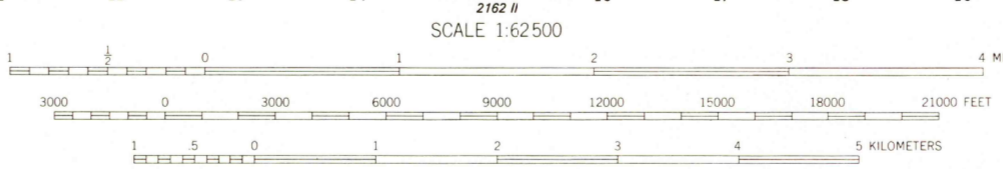
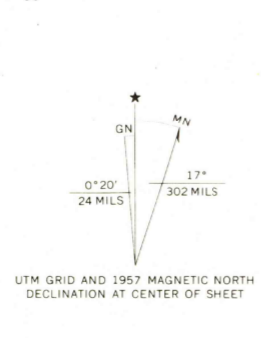


UNITED STATES
DEPARTMENT OF THE INTERIOR
GEOLOGICAL SURVEY

YERINGTON QUADRANGLE
NEVADA
15 MINUTE SERIES (TOPOGRAPHIC)



Mapped, edited, and published by the Geological Survey
Control by USGS and USCGS
Topography from aerial photographs by multiplex methods
and by planetable surveys 1957. Aerial photographs taken 1954
Polyconic projection, 1927 North American datum
10,000-foot grid based on Nevada coordinate system,
west zone
1000-meter Universal Transverse Mercator grid ticks,
zone 11, shown in blue
Red tint indicates areas in which only
landmark buildings are shown
Dashed land lines indicate approximate locations
Unchecked elevations are shown in brown



CONTOUR INTERVAL 40 FEET
DOTTED LINES REPRESENT 20-FOOT CONTOURS
NATIONAL GEODETIC VERTICAL DATUM OF 1929
THIS MAP COMPLIES WITH NATIONAL MAP ACCURACY STANDARDS
FOR SALE BY U.S. GEOLOGICAL SURVEY, DENVER, COLORADO 80225, OR RESTON, VIRGINIA 22092
A FOLDER DESCRIBING TOPOGRAPHIC MAPS AND SYMBOLS IS AVAILABLE ON REQUEST



YERINGTON, NEV.
N3845-W11900/15
1957
AMS 2161 I—SERIES V796