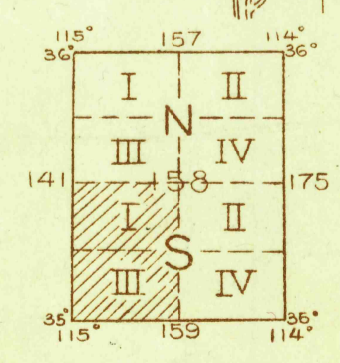
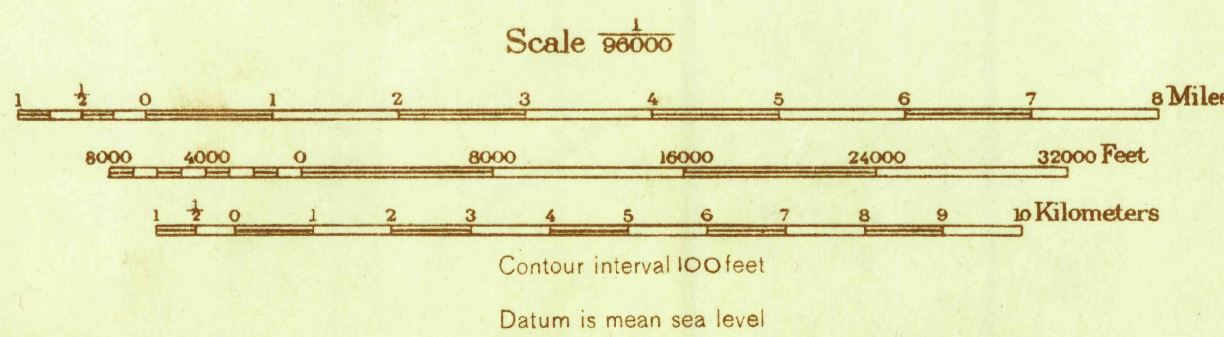


H. H. Hodgson, Division Engineer
Topography by City of Los Angeles
Control by U. S. Geological Survey, U. S. Coast and Geodetic Survey
and City of Los Angeles
Surveyed in 1926

FILE COPY

MAP INFORMATION OFFICE
GEOLOGICAL SURVEY

TRUE NORTH
MAGNETIC NORTH
APPROXIMATE MEAN
DECLINATION, 1926



Polyconic projection.
5000 yard grid based upon U. S. zone system, F
Township lines added from General Land
Office notes, few corners having been
found.

MOHAVE CITY, NEV.-CALIF.-ARIZ.

USGS
Historical File
Topographic Division

PUB AS ADVANCE SHEET ONLY (NOW OP)