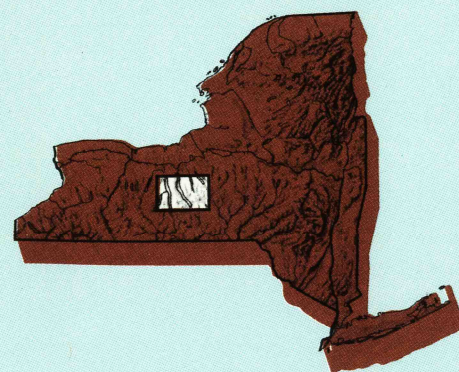
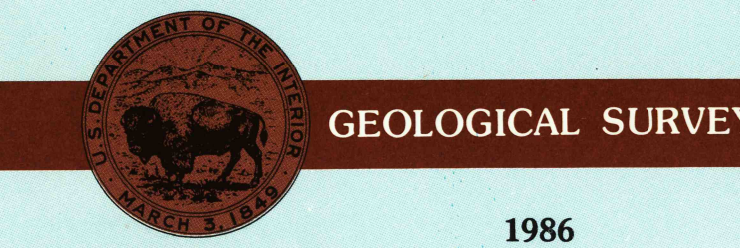


AUBURN, NEW YORK

30 X 60 MINUTE SERIES (PLANIMETRIC)

Auburn
NEW YORK1:100 000-scale
planimetric map30 X 60 MINUTE QUADRANGLE
SHOWING

- Elevations in meters
- Highways, roads and other manmade structures
- Water features
- Woodland areas
- Geographic names



Produced by the United States Geological Survey

Compiled from USGS 1:24 000-scale topographic maps dated 1942-1979. Planimetry revised from aerial photographs taken 1980 and other source data. Revised information not field checked. Map edited 1986

Projection and 10 000-meter grid, zone 18, Universal Transverse Mercator

25 000-foot grid ticks based on New York coordinate system, central zone

1927 North American Datum

To place on the predicted North American Datum 1983, move the projection lines 3 meters south and 27 meters west

There may be private inholdings within the boundaries of the National or State reservations shown on this map

NATIONAL GEODETIC VERTICAL DATUM OF 1929
ELEVATIONS SHOWN TO THE NEAREST METER

THIS MAP COMPLIES WITH NATIONAL MAP ACCURACY STANDARDS

CONVERSION TABLE		DECLINATION DIAGRAM		ADJOINING MAPS		
Meters	Feet	MAGNETIC DECLINATION		1	2	3
1	3.2808			4	5	6
2	6.5617			7	8	
3	9.8425					
4	13.1234					
5	16.4042					
6	19.6850					
7	22.9659					
8	26.2467					
9	29.5276					
10	32.8084					
To convert meters to feet multiply by 3.2808		UTM grid convergence (GN) and 1983 magnetic declination (MD) at center of map		1 Rochester 2 Syracuse 3 Eliza 4 Canandaigua 5 Norwich 6 Hornell 7 Elmira 8 Binghamton		
To convert feet to meters multiply by 0.3048		Diagram is approximate				

FOR SALE BY U. S. GEOLOGICAL SURVEY
RESTON, VIRGINIA 22092

USGS NMD HISTORICAL MAP

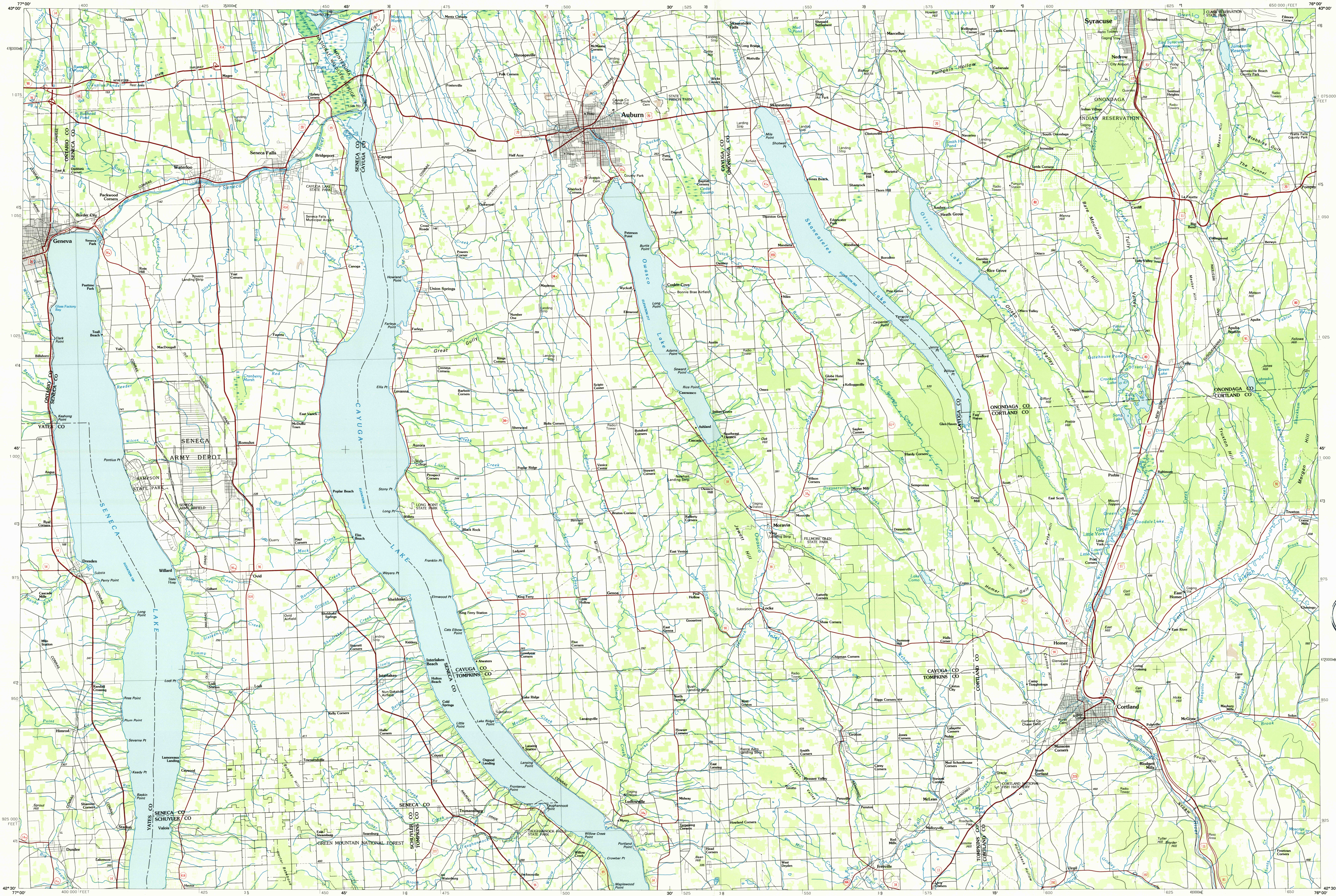
JUL 0 9 1986

REC'D FILE COPY

Topographic Map Symbols

Primary highway, hard surface	
Secondary highway, hard surface	
Light duty road, principal street, hard or improved surface	
Other road or street, trail	
Route marker: Interstate; U.S.; State	
Railroad: standard gage; narrow gage	
Bridge: overpass; underpass	
Tunnel: road; railroad	
Built up area; locality; elevation	
Airport: landing field; landing strip	
National boundary	
State boundary	
County boundary	
National or State reservation boundary	
Land grant boundary	
U.S. public lands survey: range, township; section	
Range, township; section line: protruded	
Power transmission line: pipeline	
Dam; dam with lock	
Cemetery; building	
Windmill; water well; spring	
Mine shaft; adit or cave; mine, quarry; gravel pit	
Campground; picnic area; U.S. location monument	
Ruins; cliff dwelling	
Distorted surface: strip mine, lava, sand	
Contours: index; intermediate; supplementary	
Bathymetric contours: index; intermediate	
Stream, lake; perennial; intermittent	
Rapids, large and small; falls, large and small	
Area to be submerged; marsh, swamp	
Land subject to controlled inundation; woodland	
Scrub; mangrove	
Orchard; vineyard	

A pamphlet describing topographic maps is available on request



• INTERIOR—GEOLOGICAL SURVEY, RESTON, VIRGINIA—1986

SCALE 1:100 000

AUBURN, NEW YORK
42076-E1-PL-100

1986