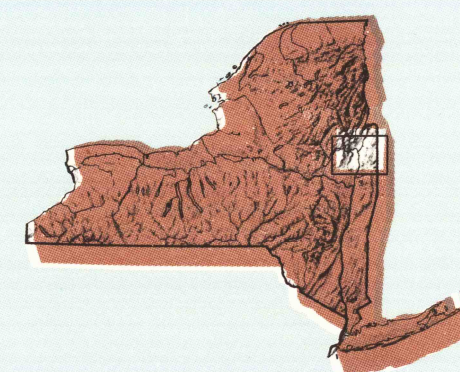


GLENS FALLS, NEW YORK-VERMONT

30 X 60 MINUTE SERIES (PLANIMETRIC)

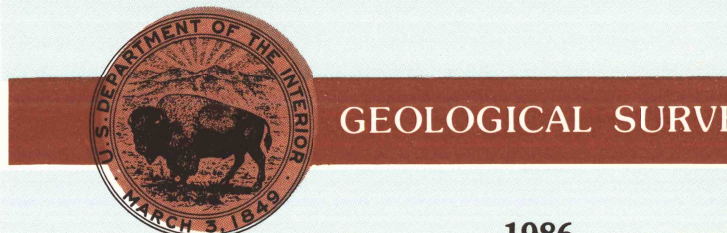
Glens Falls
NEW YORK-VERMONT

1:100 000-scale
planimetric map



30 X 60 MINUTE QUADRANGLE
SHOWING

- Elevations in meters
- Highways, roads and other manmade structures
- Water features
- Woodland areas
- Geographic names



1986

Produced by the United States Geological Survey

Compiled from USGS 1:24 000-scale topographic maps dated 1944-1968. Planimetry revised from aerial photographs taken 1979 and other source data. Revised information not field checked. Map edited 1986.

Projection and 10 000-meter grid, zone 18. Universal Transverse Mercator. 25 000-foot grid ticks based on New York coordinate system, east zone and Vermont coordinate system 1927 North American Datum. To place on the predicted North American Datum 1983 move the projection lines 4 meters south and 35 meters east. There may be private inholdings within the boundaries of the National or State reservations shown on this map.

NATIONAL GEODETIC VERTICAL DATUM OF 1929
ELEVATIONS SHOWN TO THE NEAREST METER

THIS MAP COMPLIES WITH NATIONAL MAP ACCURACY STANDARDS

CONVERSION TABLE		DECLINATION DIAGRAM		ADJOINING MAPS				
Meters	Feet			1	2	3	4	5
1	3.2808							
2	6.5617							
3	9.8425							
4	13.1234							
5	16.4042							
6	19.6850							
7	22.9659							
8	26.2467							
9	29.5276							
10	32.8084							
To convert meters to feet multiply by 3.2808								
To convert feet to meters multiply by 0.3048								
				1 Route Lake 2 Thunders 3 Rutland 4 Gloverville 5 Champlain 6 Albany 7 Keene				

FOR SALE BY U.S. GEOLOGICAL SURVEY, DENVER, COLORADO 80225
OR RESTON, VIRGINIA 22092

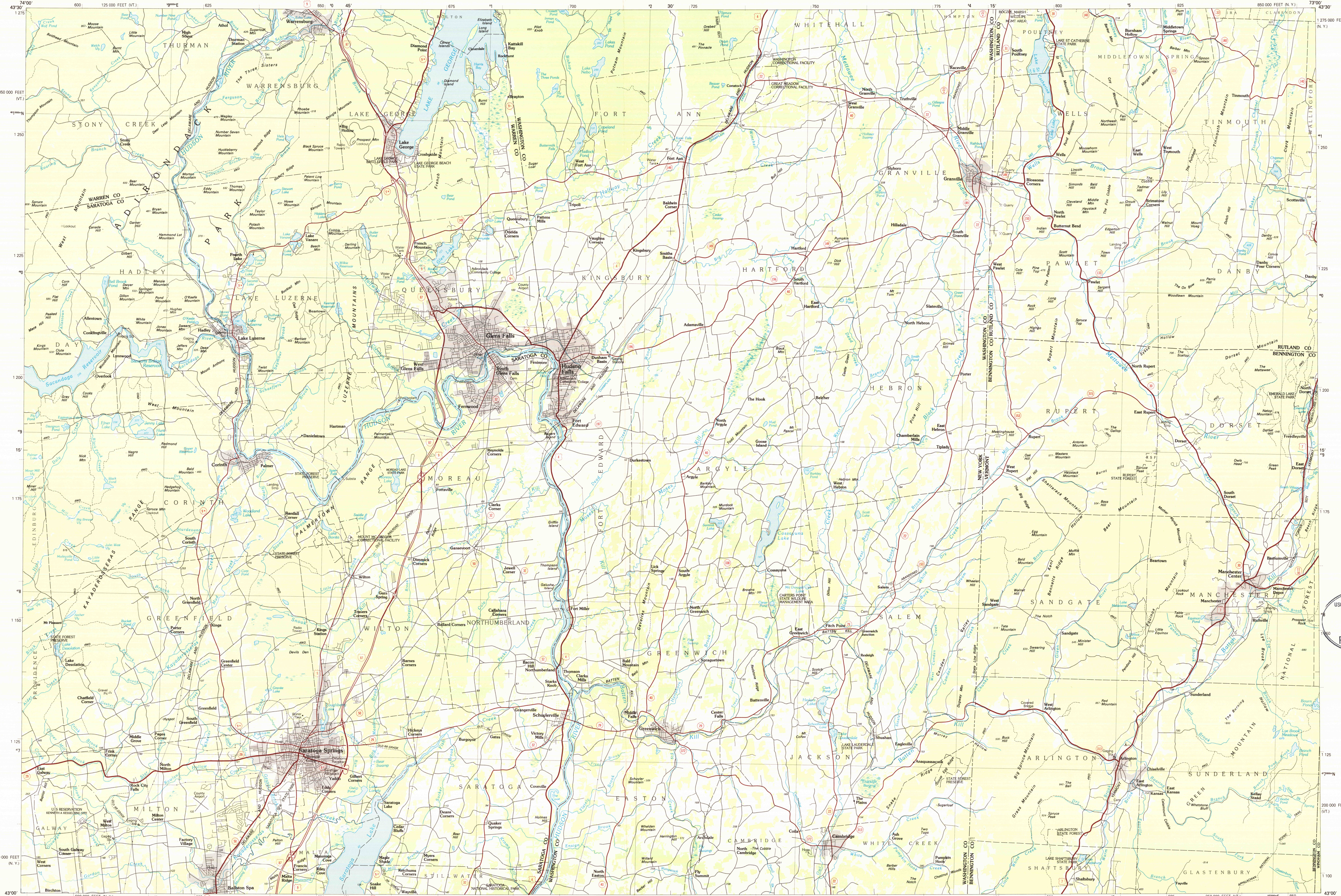
USGS NMD HISTORICAL MAP
AUG 25 1986
REC'D FILE COPY

Topographic Map Symbols

- Primary highway, hard surface
- Secondary highway, hard surface
- Light duty road, principal street, hard or improved surface
- Other road or street, mail
- Route marker: Interstate, U. S. State
- Railroad: standard gauge; narrow gauge
- Bridge: overpass; underpass
- Tunnel: road, railroad
- Built up area, locality, elevation
- Airport; landing field; landing strip
- National boundary
- State boundary
- County boundary
- National or State reservation boundary
- Land grant boundary
- U. S. public lands survey: range, township, section
- Range, township, section line: protected
- Power transmission line: pipeline
- Dam; dam with lock
- Cemetery: building
- Windsail; water with spring
- Mine shaft; old or new; mine, quarry, gravel pit
- Campground; picnic area; U. S. location monument
- Ruins; cliff dwelling
- Distorted surface: strip mine, lava, sand
- Contours: index, intermediate, supplementary
- Bathymetric contours: index, intermediate
- Stream, lake: perennial, intermittent
- Rapids, large and small; falls, large and small
- Area to be submerged: marsh, swamp
- Land subject to controlled inundation; woodland
- Sand; meadow
- Orchard; vineyard

A pamphlet describing topographic maps is available on request

GLENS FALLS, NEW YORK-VERMONT
43073-A1-PL-100
1986



SCALE 1:100 000
1 CENTIMETER ON THE MAP REPRESENTS 1 KILOMETER ON THE GROUND
KILOMETERS 1 0 1 2 3 4 5 6 7 8 9 10 11 12 13 14 15 16 17 18 19 20
MILES 1 0 1 2 3 4 5 6 7 8 9 10 11 12 13 14 15 16 17 18 19 20
5000 0 5000 10000 15000 20000 25000 30000 35000 40000 45000 50000 55000 60000 65000 70000 METERS