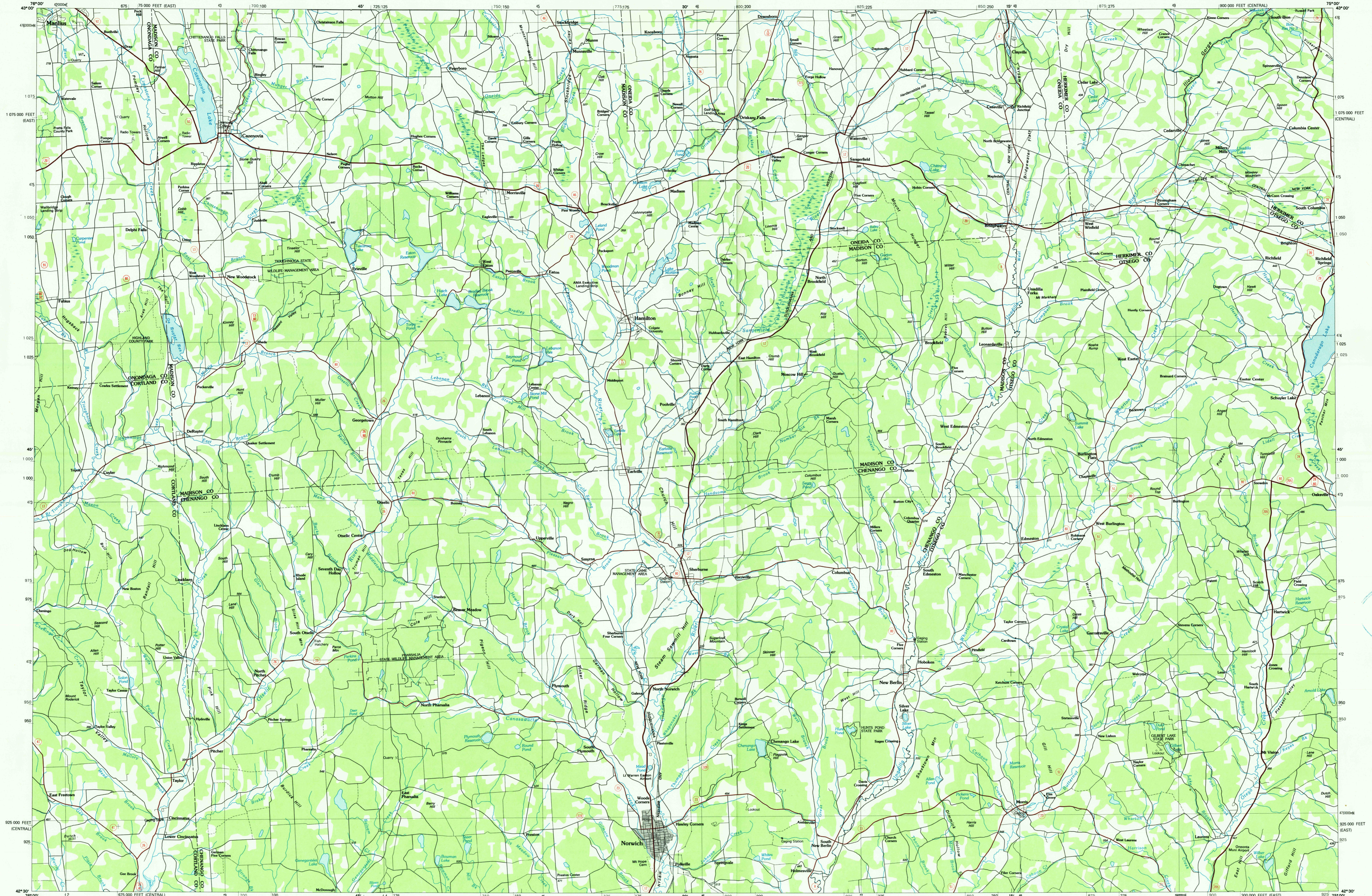


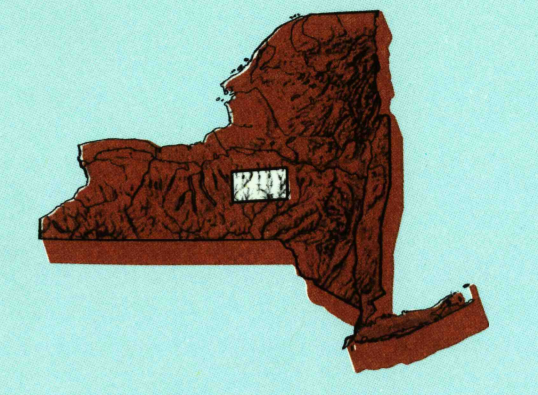
NORWICH, NEW YORK

30 X 60 MINUTE SERIES (PLANIMETRIC)



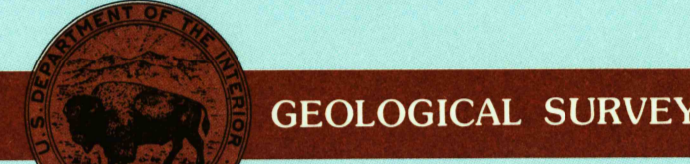
Norwich NEW YORK

1:100 000-scale planimetric map



30 X 60 MINUTE QUADRANGLE SHOWING

- Elevations in meters
- Highways, roads and other manmade structures
- Water features
- Woodland areas
- Geographic names



GEOLOGICAL SURVEY

1986

Produced by the United States Geological Survey
 Compiled from USGS 1:24 000-scale topographic maps dated 1945-1982. Planimetry revised from aerial photographs taken 1982 and other source data. Revised information not field checked. Map edited 1986
 Projection and 10 000-meter grid, zone 18, Universal Transverse Mercator
 25 000-foot grid ticks based on New York coordinate system, central and east zones
 1927 North American Datum
 To place on the predicted North American Datum 1983, move the projection lines 3 meters south and 30 meters west
 There may be private inholdings within the boundaries of the National or State reservations shown on this map

NATIONAL GEODETIC VERTICAL DATUM OF 1929 ELEVATIONS SHOWN TO THE NEAREST METER

THIS MAP COMPLIES WITH NATIONAL MAP ACCURACY STANDARDS

CONVERSION TABLE		DECLINATION DIAGRAM		ADJOINING MAPS	
Meters	Feet	Meters	Feet	1	2
1	3.2808	12°	4°	3	4
2	6.5617	12°	4°	4	5
3	9.8425	12°	4°	5	6
4	13.1234	12°	4°	6	7
5	16.4042	12°	4°	7	8
6	19.6850	12°	4°	8	
7	22.9659	12°	4°		
8	26.2467	12°	4°		
9	29.5275	12°	4°		
10	32.8084	12°	4°		

To convert meters to feet multiply by 3.2808
 To convert feet to meters multiply by 0.3048

UTM grid convergence (GTM and 1983 magnetic declination) (M) is center of map
 Diagram is approximate

1	2	3
1 Syracuse	2 Utica	3 Gloversville
4 Auburn	5 Amsterdam	6 Elmira
7 Binghamton	8 Pepsico Reservoir	

FOR SALE BY U.S. GEOLOGICAL SURVEY DENVER, COLORADO 80225, OR RESTON, VIRGINIA 22092

USGS NHD HISTORICAL MAP
JAN 16 1991
REC'D FILE COPY

Topographic Map Symbols

- Primary highway, hard surface
- Secondary highway, hard surface
- Light duty road, principal street, hard or improved surface
- Other road or street, trail
- Route marker: Interstate, U.S., State
- Railroad: standard gage, narrow gage
- Bridge: overpass; underpass
- Tunnel: road; railroad
- Built up area: mostly elevation
- Airport; landing field; landing strip
- National boundary
- State boundary
- County boundary
- National or State reservation boundary
- Land grant boundary
- U.S. public lands survey: range, township; section
- Range, township; section line: protected
- Power transmission line; pipeline
- Dam; dam with lock
- Cemetery: building
- Windmill; water well; spring
- Mine shaft; adit or cave; mine, quarry; gravel pit
- Camaground; picnic area; U.S. location monument
- Ruin; cliff dwelling
- Distorted surface: strip mine, lava, sand
- Contours: index; intermediate; supplementary
- Bathymetric contours: index; intermediate
- Stream, lake: perennial; intermittent
- Rapids, large and small; falls, large and small
- Area to be submerged; marsh, swamp
- Land subject to controlled inundation; woodland
- Scrub, meadow
- Orchard; vineyard

A pamphlet describing topographic maps is available on request

SCALE 1:100 000

NORWICH, NEW YORK 42075-E1-PL-100

1986