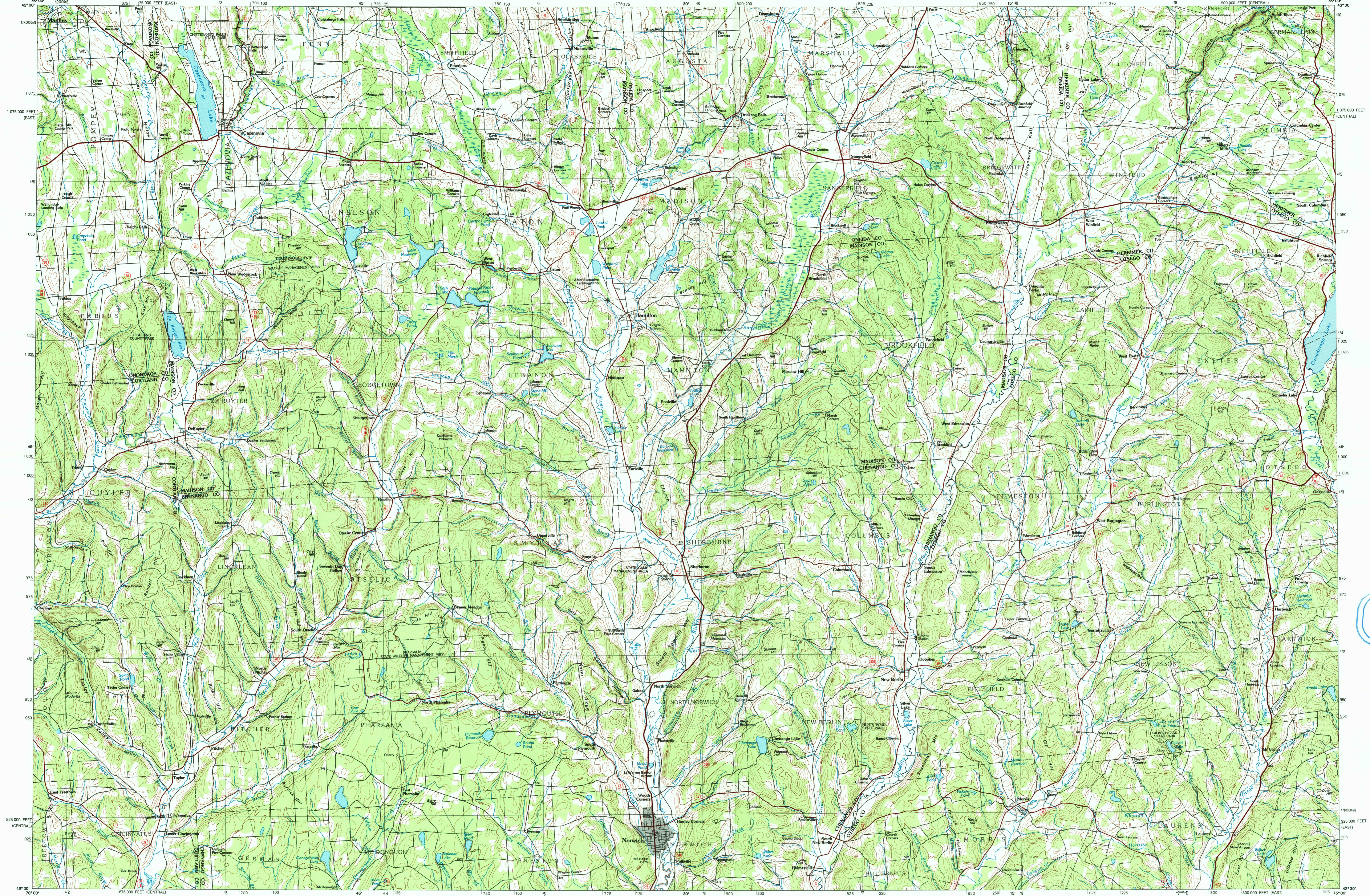


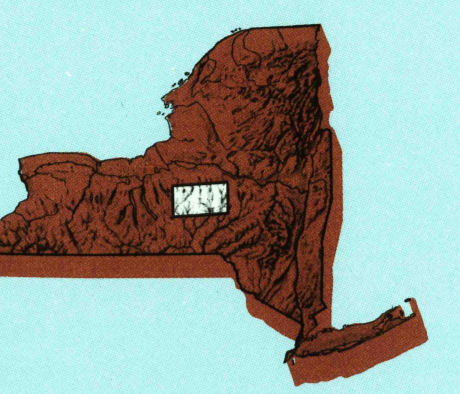
NORWICH, NEW YORK

30 X 60 MINUTE SERIES (TOPOGRAPHIC)



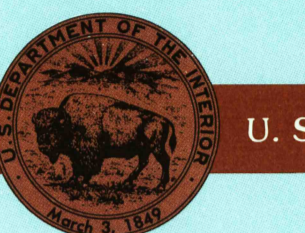
Norwich NEW YORK

1:100 000-scale metric topographic map



30 X 60 MINUTE QUADRANGLE SHOWING

- Contours and elevations in meters
- Highways, roads and other manmade structures
- Water features
- Woodland areas
- Geographic names



U. S. GEOLOGICAL SURVEY

1986 PHOTOINSPECTED 1988

Produced by the United States Geological Survey  
 Compiled from USGS 1:24 000-scale topographic maps dated 1943-1982. Planimetry revised from aerial photographs taken 1982 and other source data. Revised information not field checked. Map edited 1986.  
 Projection and 10 000-meter grid, zone 18.  
 Universal Transverse Mercator  
 25 000-foot grid ticks based on New York coordinate system, central and east zones  
 1927 North American Datum  
 To place on the predicted North American Datum 1983, move the projection lines 3 meters south and 30 meters west.  
 There may be private inholdings within the boundaries of the National or State reservations shown on this map.  
 Map photoinspected using 1988 photographs.  
 No major culture or drainage changes found.

CONTOUR INTERVAL 20 METERS  
 NATIONAL GEODETIC DATUM OF 1929  
 ELEVATIONS SHOWN TO THE NEAREST METER

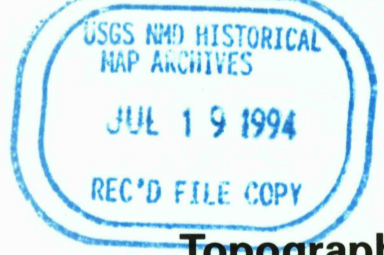
THIS MAP COMPLIES WITH NATIONAL MAP ACCURACY STANDARDS

CONVERSION TABLE		DECLINATION DIAGRAM		ADJOINING MAPS		
Meters	Feet	MAGNETIC DECLINATION		1	2	3
1	3.2808			4	5	6
2	6.5617			1	2	3
3	9.8425			4	5	6
4	13.1234			7	8	9
5	16.4042					
6	19.6850					
7	22.9659					
8	26.2467					
9	29.5275					
10	32.8084					

To convert meters to feet multiply by 3.2808  
 To convert feet to meters multiply by 0.3048

UTM grid convergence (GCM) is magnetic declination (MD) at center of map.  
 Diagram is approximate.

FOR SALE BY U.S. GEOLOGICAL SURVEY DENVER, COLORADO 80225, OR RESTON, VIRGINIA 22092

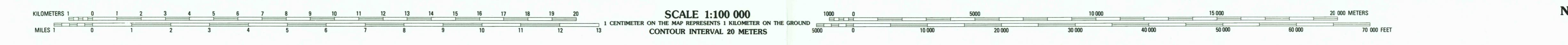


Topographic Map Symbols

- Primary highway, hard surface
- Secondary highway, hard surface
- Light duty road, principal street, hard or improved surface
- Other road or street, trail
- Road marker: Interstate, U.S. State
- Railroad, standard gauge, narrow gauge
- Bridge, overpass, underpass
- Tunnel: road, railroad
- Built up area, locality, elevation
- Airport: landing field, landing strip
- National boundary
- State boundary
- County boundary
- Civil township boundary
- National or State reservation boundary
- Land grant boundary
- U.S. public lands survey: range, township, section
- Range, township, section line: protracted
- Power transmission line: pipeline
- Dam: dam with lock
- Cemetery: building
- Wellhead: water well with spring
- Mine shaft: solid or cave; mine quarry, gravel pit
- Campground, picnic area, U.S. location monument
- Ruins; cliff dwelling
- Distorted surface: strip mine, lava, sand
- Contours: index, intermediate, supplementary
- Bathymetric contours: index, intermediate
- Stream, lake, perennial, intermittent
- Reefs, large and small; falls, large and small
- Area to be submerged: marsh, swamp
- Land subject to controlled inundation; woodland
- Scrub, mangrove
- Orchard, vineyard

A pamphlet describing topographic maps is available on request

• INTERIOR-GEOLOGICAL SURVEY, RESTON, VIRGINIA-1989



NORWICH, NEW YORK 42075-E1-TM-100 1986 PHOTOINSPECTED 1988