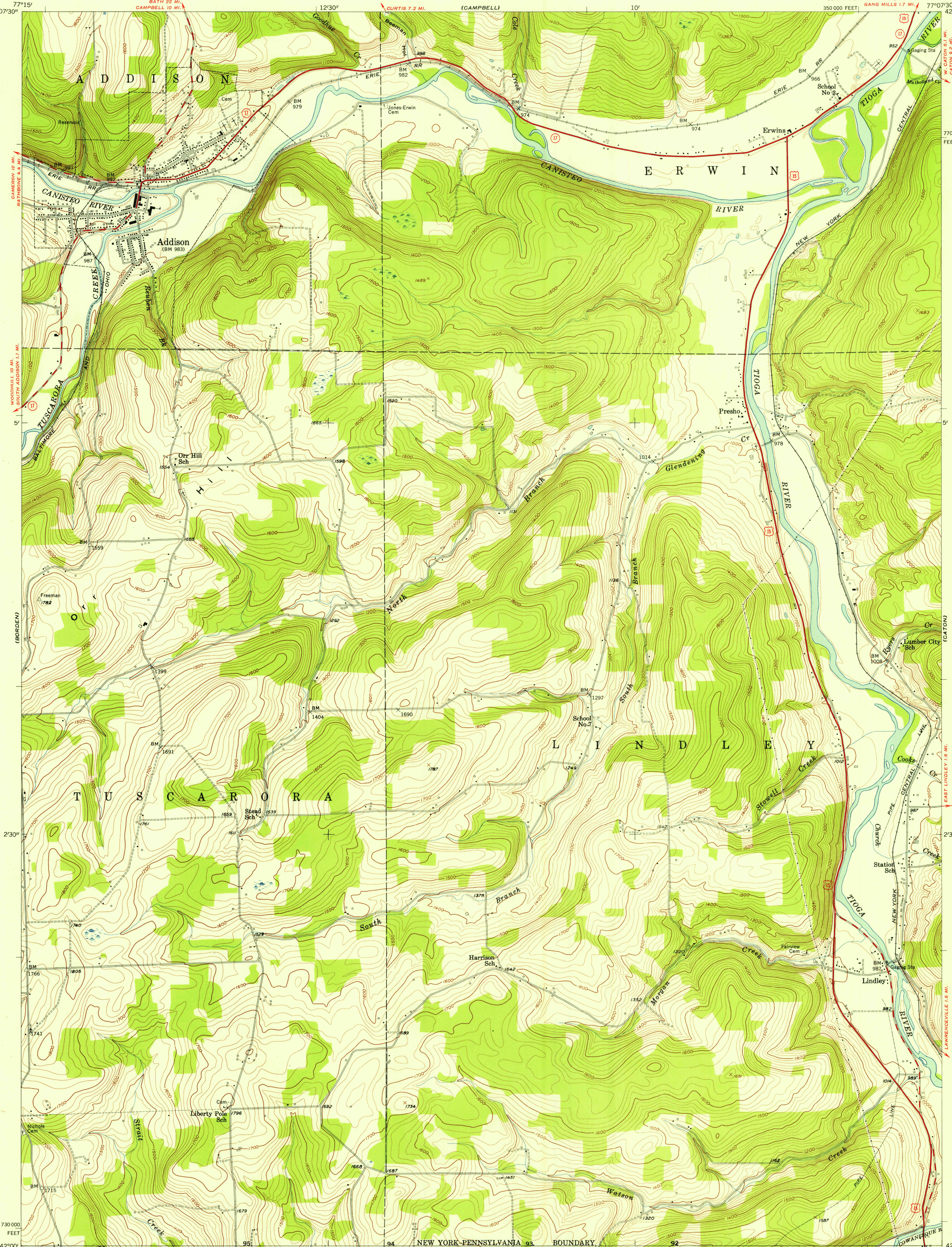


UNITED STATES  
DEPARTMENT OF THE INTERIOR  
GEOLOGICAL SURVEY

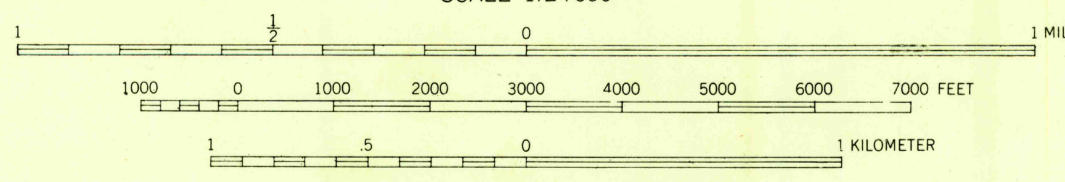
ADDISON QUADRANGLE  
NEW YORK—STEBEN CO.  
7.5 MINUTE SERIES (TOPOGRAPHIC)  
SW/4 CORNING 15' QUADRANGLE  
CORNING (JUNC. N.Y. 414) 5.1 MI.  
GANG MILLS 1.7 MI.  
350 000 FEET

U.S.G.S.  
FILE COPY  
TOPOGRAPHIC DIVISION



Mapped, edited, and published by the Geological Survey  
Control by USGS and USC&GS  
Topography from aerial photographs by stereophotogrammetric  
methods. Aerial photographs taken 1952. Field check 1953  
Polyconic projection. 1927 North American datum  
10,000-foot grid based on New York coordinate system,  
central zone

TRUE NORTH  
MAGNETIC NORTH  
APPROXIMATE MEAN  
DECLINATION, 1953



ROAD CLASSIFICATION  
Heavy-duty ——— Light-duty ———  
Medium-duty ——— Unimproved dirt ———  
U.S. Route ——— State Route ———

ADDISON, N. Y.  
SW/4 CORNING 15' QUADRANGLE  
N 4200—W 7707.5/7.5

1953

THIS MAP COMPLIES WITH NATIONAL MAP ACCURACY STANDARDS  
FOR SALE BY U. S. GEOLOGICAL SURVEY, WASHINGTON 25, D. C.  
A FOLDER DESCRIBING TOPOGRAPHIC MAPS AND SYMBOLS IS AVAILABLE ON REQUEST

U.S.G.S.  
FILE COPY  
TOPOGRAPHIC DIVISION

MAY 11 1955