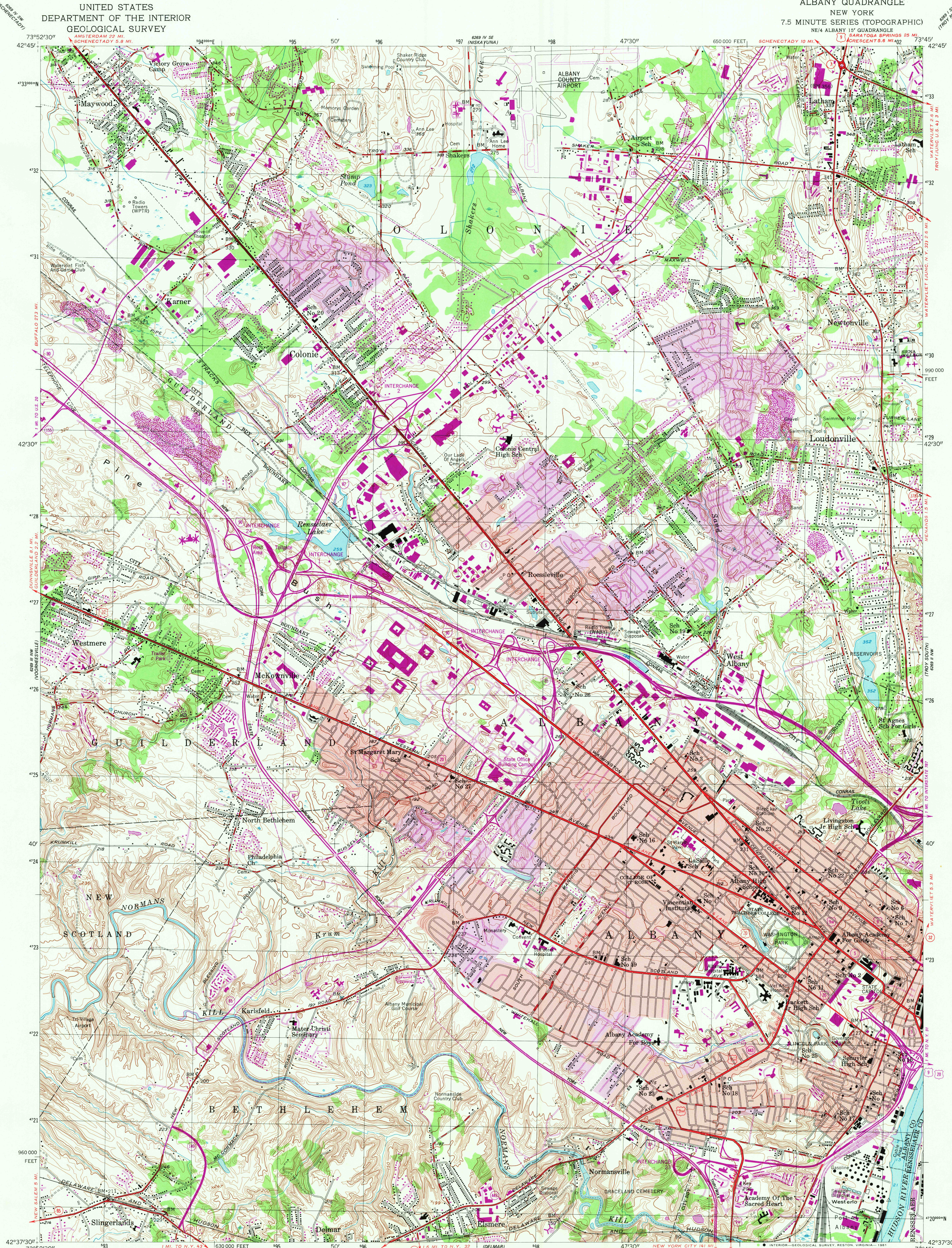


UNITED STATES  
DEPARTMENT OF THE INTERIOR  
GEOLOGICAL SURVEY

ALBANY QUADRANGLE  
NEW YORK  
7.5 MINUTE SERIES (TOPOGRAPHIC)  
NE 1/4 ALBANY 15' QUADRANGLE



Mapped, edited, and published by the Geological Survey  
Control by USGS and NOS/NOAA

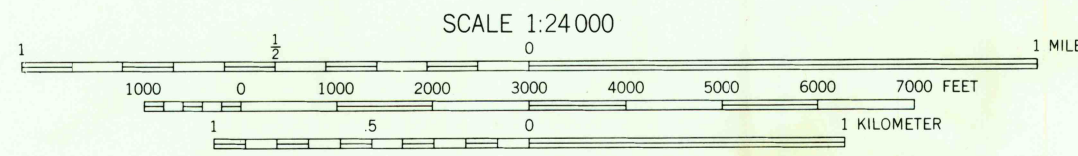
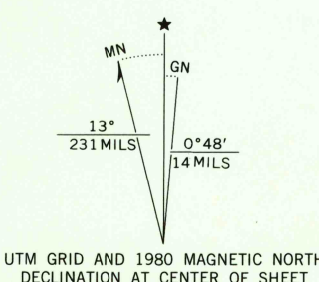
Topography by photogrammetric methods from aerial photographs  
taken 1952. Field checked 1953

Hydrography from NOS/chart 284 1942

Polyconic projection. 10,000-foot grid based on New York coordinate  
system, east zone. 1000-meter Universal Transverse Mercator grid ticks,  
zone 18, 1927 North American Datum. To place on the predicted North  
American Datum 1983 move the projection lines 5 meters south and  
35 meters west as shown by dashed corner ticks

Red tint indicates areas in which only landmark buildings are shown  
Revisions shown in purple compiled from aerial photographs  
taken 1978 and other source data. This information not  
field checked. Map edited 1980

Purple tint indicates extension of urban areas



CONTOUR INTERVAL 10 FEET  
NATIONAL GEODETIC VERTICAL DATUM OF 1929  
DEPTH CURVES AND SOUNDINGS IN FEET-DATUM IS MEAN LOW WATER  
THE RELATIONSHIP BETWEEN THE TWO DATUMS IS VARIABLE  
SHORELINE SHOWN REPRESENTS THE APPROXIMATE LINE OF MEAN HIGH WATER  
THE MEAN RANGE OF TIDE IS 4.4 FEET

THIS MAP COMPLIES WITH NATIONAL MAP ACCURACY STANDARDS  
FOR SALE BY U.S. GEOLOGICAL SURVEY, RESTON, VIRGINIA 22092  
A FOLDER DESCRIBING TOPOGRAPHIC MAPS AND SYMBOLS IS AVAILABLE ON REQUEST

ROAD CLASSIFICATION  
Primary highway, hard surface  
Secondary highway, hard surface  
Light-duty road, hard or improved surface  
Unimproved road  
Interstate Route  
U.S. Route  
State Route



ALBANY, N.Y.  
NE 1/4 ALBANY 15' QUADRANGLE  
N 4237.5-W 7345.7.5  
1953  
PHOTOREVISED 1980  
DMA 6269 III NE-SERIES V821

SEP 3 1981

2400