

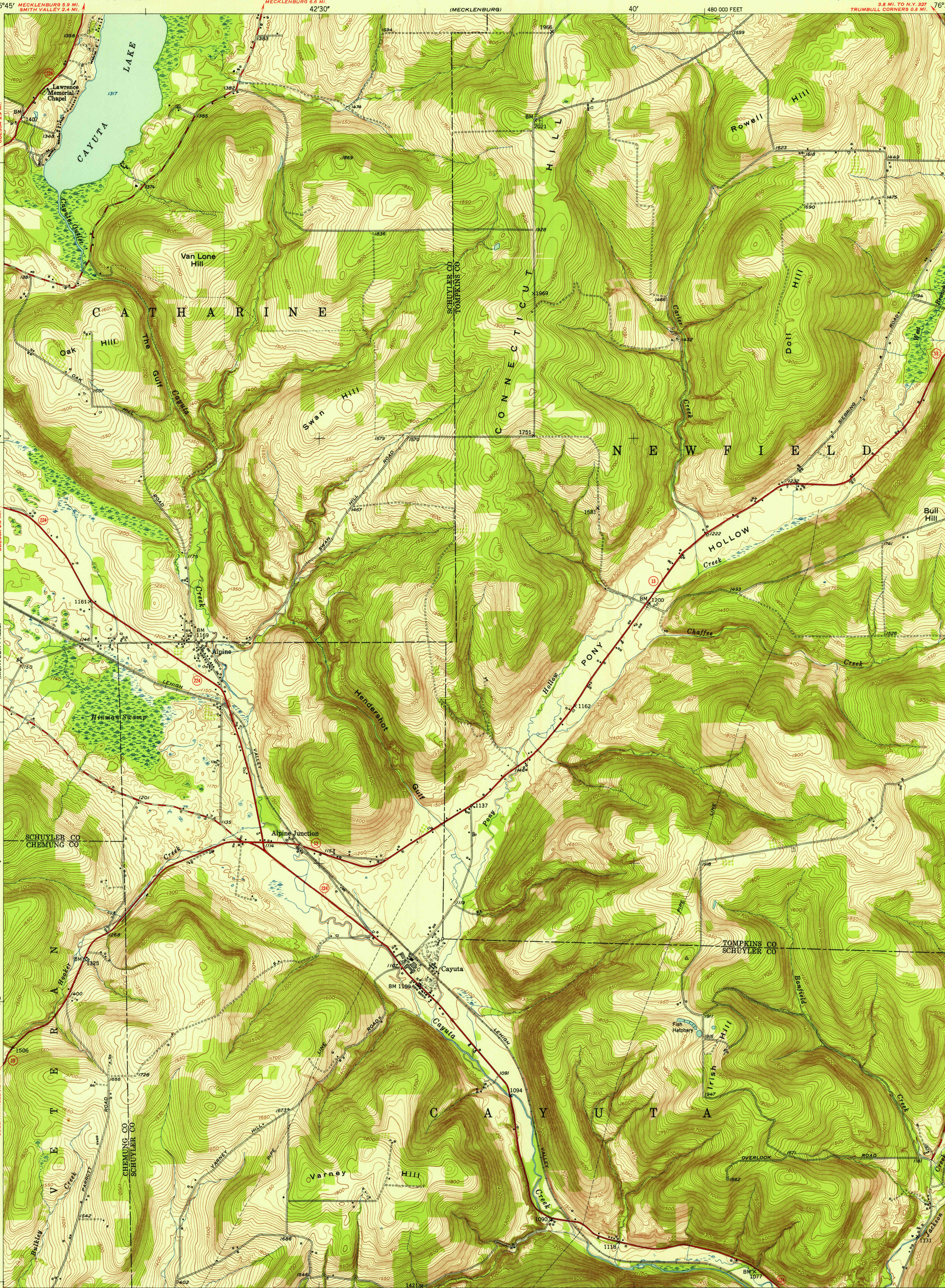
UNITED STATES  
DEPARTMENT OF THE INTERIOR  
GEOLOGICAL SURVEY

FILE COPY  
Inspection and Editing

ALPINE QUADRANGLE  
NEW YORK  
7.5 MINUTE SERIES (TOPOGRAPHIC)

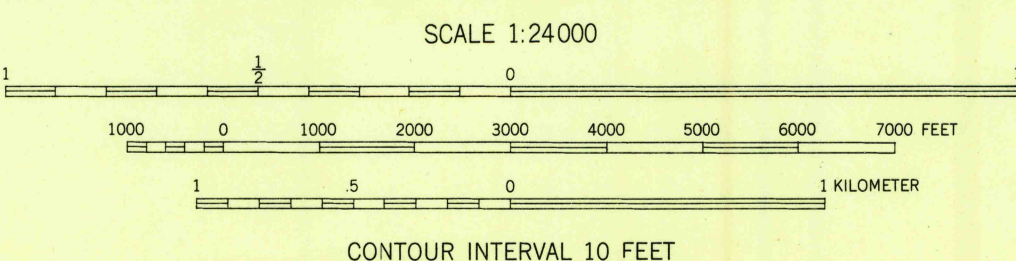
SW 1/4 ITHACA 15' QUADRANGLE  
SW 1/4 ITHACA 15' QUADRANGLE  
TRUMBULL CORNERS 0.5 MI.

ITHACA WEST  
42°22'30"



Mapped, edited, and published by the Geological Survey  
Control by USGS and USC&GS  
Topography from aerial photographs by multiplex methods  
Aerial photographs taken 1944. Field check 1950  
Polyconic projection. 1927 North American datum  
10,000-foot grid based on New York coordinate system,  
central zone

TRUE NORTH  
MAGNETIC NORTH  
APPROXIMATE MEAN  
DECLINATION, 1950



CONTOUR INTERVAL 10 FEET  
DATUM IS MEAN SEA LEVEL

THIS MAP COMPLIES WITH NATIONAL MAP ACCURACY STANDARDS  
FOR SALE BY U. S. GEOLOGICAL SURVEY, WASHINGTON 25, D. C.  
A FOLDER DESCRIBING TOPOGRAPHIC MAPS AND SYMBOLS IS AVAILABLE ON REQUEST

USGS  
Historical File  
Topographic Division

ROAD CLASSIFICATION  
Heavy-duty 4 LANE 6 LANE Light-duty  
Medium-duty 4 LANE 6 LANE Unimproved dirt  
U. S. Route State Route

FILE COPY  
Inspection and Editing

ALPINE, N. Y.  
SW 1/4 ITHACA 15' QUADRANGLE  
N4215-W7637.5/7.5

1950

OCT 17 1952 3095