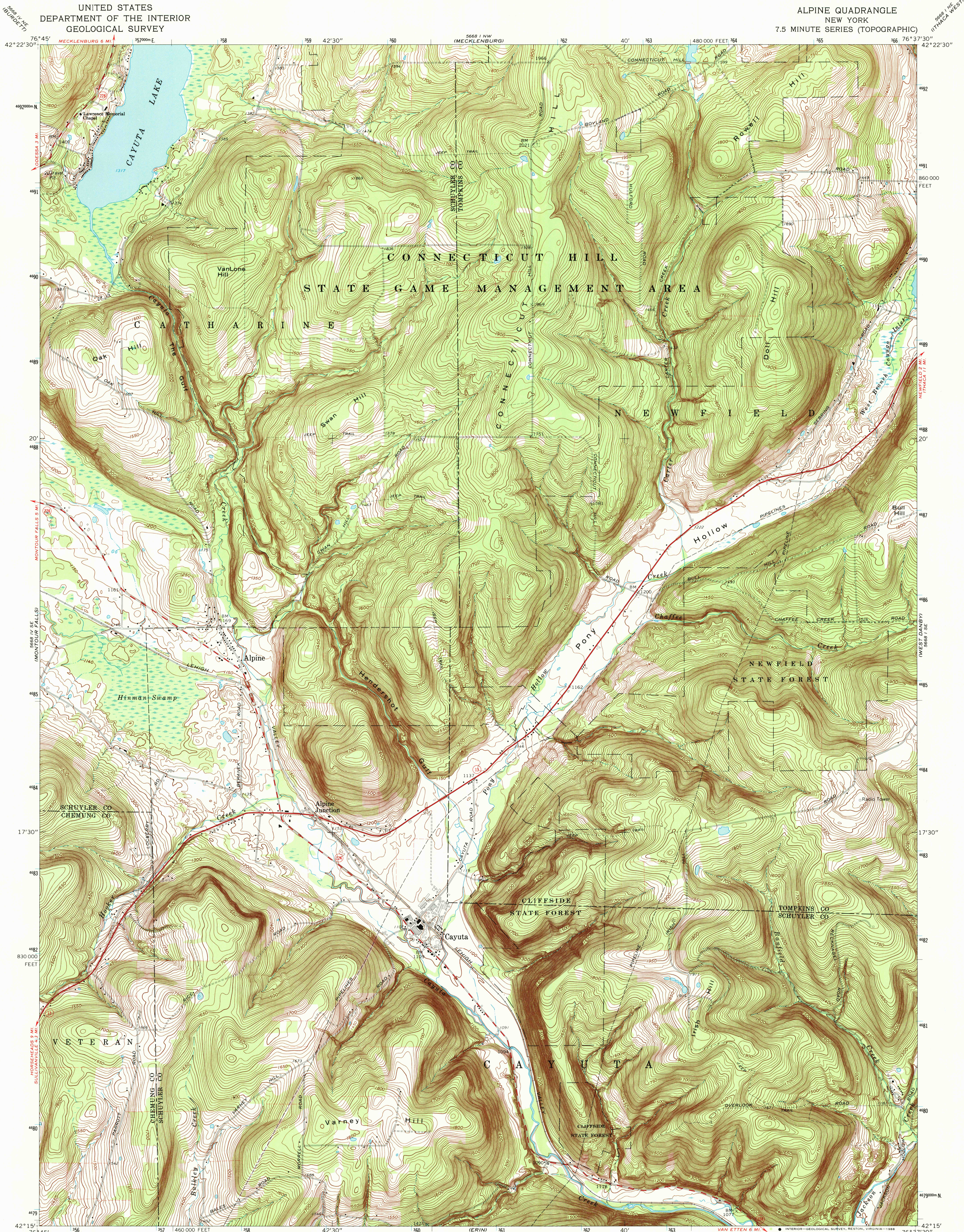


UNITED STATES  
DEPARTMENT OF THE INTERIOR  
GEOLOGICAL SURVEY

ALPINE QUADRANGLE  
NEW YORK  
7.5 MINUTE SERIES (TOPOGRAPHIC)



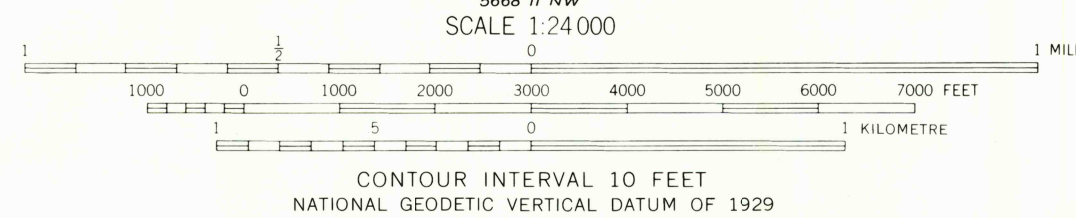
Maped, edited, and published by the Geological Survey  
Revised in cooperation with New York Department of Transportation  
Control by USGS and USC&GS

Topography by photogrammetric methods from aerial photographs  
taken 1944. Field checked 1950. Revised from aerial  
photographs taken 1968. Field checked 1969

Polyconic projection. 1927 North American datum  
10,000-foot grid based on New York coordinate system, central zone  
1000-metre Universal Transverse Mercator grid ticks,  
zone 18, shown in blue

Fine red dashed lines indicate selected fence and field lines where  
generally visible on aerial photographs. This information is unchecked

Map photoinspected 1976  
No major culture or drainage changes observed



ROAD CLASSIFICATION  
Primary highway, all weather, hard surface  
Secondary highway, all weather, hard surface  
Light-duty road, all weather, improved surface  
Unimproved road, fair or dry weather  
State Route

THIS MAP COMPLIES WITH NATIONAL MAP ACCURACY STANDARDS  
FOR SALE BY U. S. GEOLOGICAL SURVEY  
DENVER, COLORADO 80225, OR RESTON, VIRGINIA 22092  
A FOLDER DESCRIBING TOPOGRAPHIC MAPS AND SYMBOLS IS AVAILABLE ON REQUEST

To place on the predicted North American Datum 1983  
move the projection lines 3 meters south and  
27 meters west as shown by dashed corner ticks

ALPINE, N. Y.  
42076-C6-TF-024

1969  
PHOTOINSPECTED 1976  
DMA 5668 1 SW-SERIES 9821

USGS AMM MICROFILM MAP  
SEP 07 1988  
REC'D FILE COPY