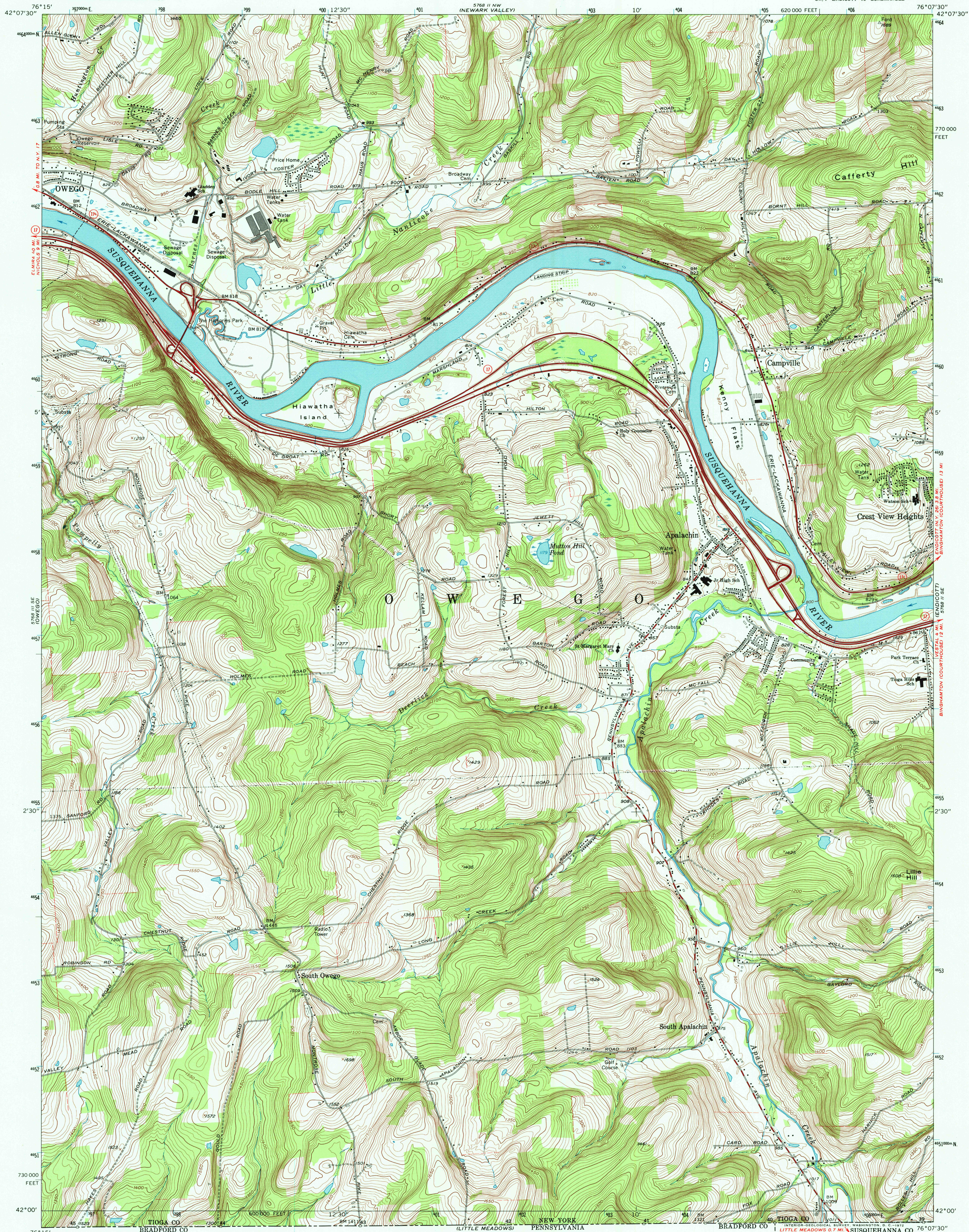
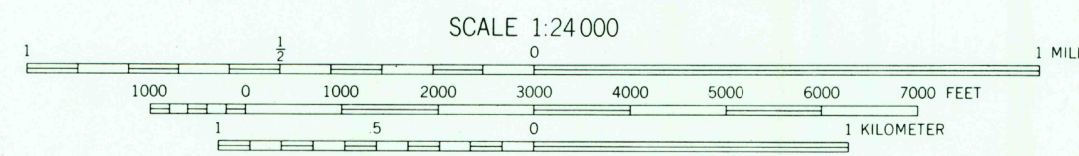
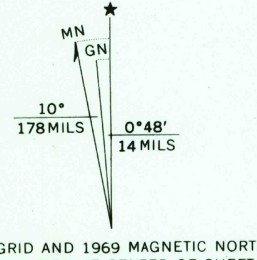


UNITED STATES
DEPARTMENT OF THE INTERIOR
GEOLOGICAL SURVEY

APALACHIN QUADRANGLE
NEW YORK—TIOGA CO.
7.5 MINUTE SERIES (TOPOGRAPHIC)
SW/4 ENDICOTT 15' QUADRANGLE



Mapped, edited, and published by the Geological Survey
Revised in cooperation with New York Department of Transportation
Control by USGS and USC&GS
Topography by photogrammetric methods from aerial photographs
taken 1942, 1944, and 1948. Field checked 1956. Revised from aerial
photographs taken 1968. Field checked 1969
Polyconic projection. 1927 North American datum
10,000-foot grid based on New York coordinate system,
central zone
1000-meter Universal Transverse Mercator grid ticks,
zone 18, shown in blue
Fine red dashed lines indicate selected fence and field lines where
generally visible on aerial photographs. This information is unchecked



CONTOUR INTERVAL 10 FEET
DATUM IS MEAN SEA LEVEL

THIS MAP COMPLIES WITH NATIONAL MAP ACCURACY STANDARDS
FOR SALE BY U.S. GEOLOGICAL SURVEY, WASHINGTON, D.C. 20242
A FOLDER DESCRIBING TOPOGRAPHIC MAPS AND SYMBOLS IS AVAILABLE ON REQUEST



ROAD CLASSIFICATION
Primary highway, hard surface
Secondary highway, hard surface
Unimproved road, improved surface
Interstate Route
U. S. Route
State Route

APALACHIN, N. Y.
SW/4 ENDICOTT 15' QUADRANGLE
N4200—W7607.5/7.5

1969

AMS 5768 II SW—SERIES V821

RECEIVED

AUG 3 1 1998

USGS NMD

HISTORICAL MAP ARCHIVES

ISBN 0-607-41150-3

