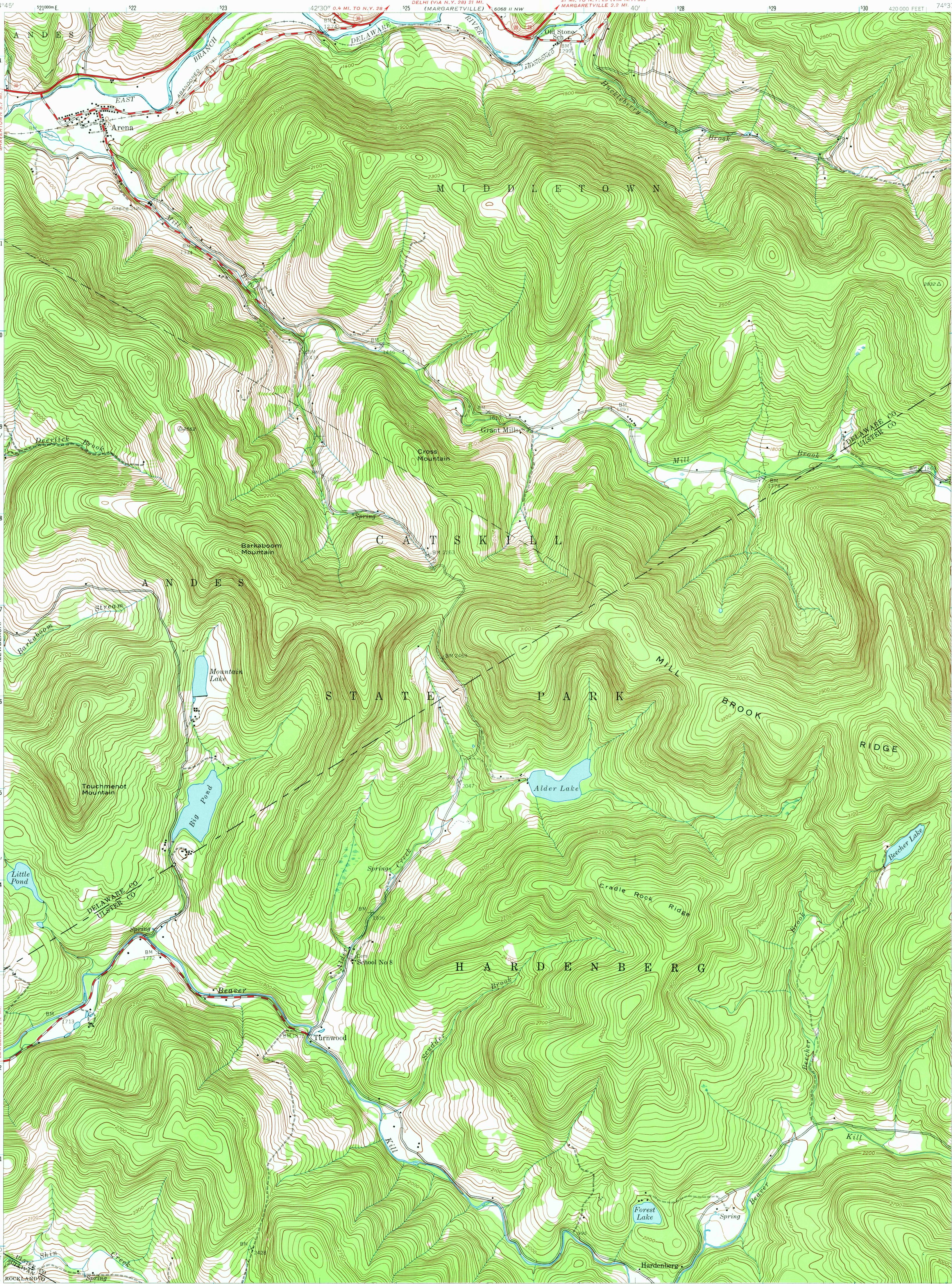
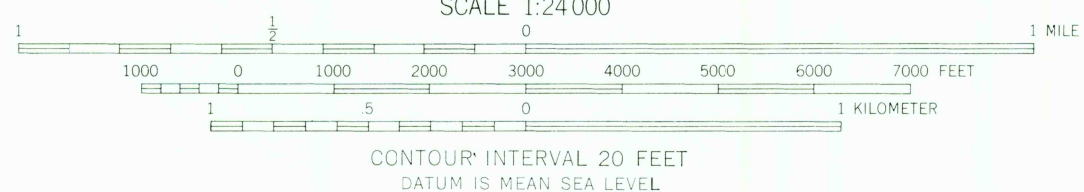
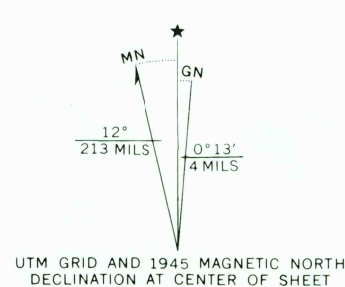


6068 II NE
(FLEISCHMANN'S)



Mapped by the Army Map Service
Published for civil use by the Geological Survey
Control by USC&GS and TVA
Topography from aerial photographs by photogrammetric methods
Aerial photographs taken 1943. Field check 1945
Polyconic projection. 1927 North American datum
10,000-foot grid based on New York coordinate system, east zone
1000-meter Universal Transverse Mercator grid ticks,
zone 18, shown in blue



ROAD CLASSIFICATION
Heavy duty ——— Light duty ———
Medium duty ——— Unimproved dirt ———
State Route ———

ARENA, N. Y.
SW 1/4 MARGARETVILLE 15' QUADRANGLE
N 4200—W 7437.5/7.5
1945
AMS 6068 II SW—SERIES V821

JAN 4 1974

USGS
Historical File
Topographic Division

THIS MAP COMPLIES WITH NATIONAL MAP ACCURACY STANDARDS
FOR SALE BY U. S. GEOLOGICAL SURVEY, WASHINGTON, D. C. 20242
A FOLDER DESCRIBING TOPOGRAPHIC MAPS AND SYMBOLS IS AVAILABLE ON REQUEST