

588 11 SE
(CATTARAUGUS)

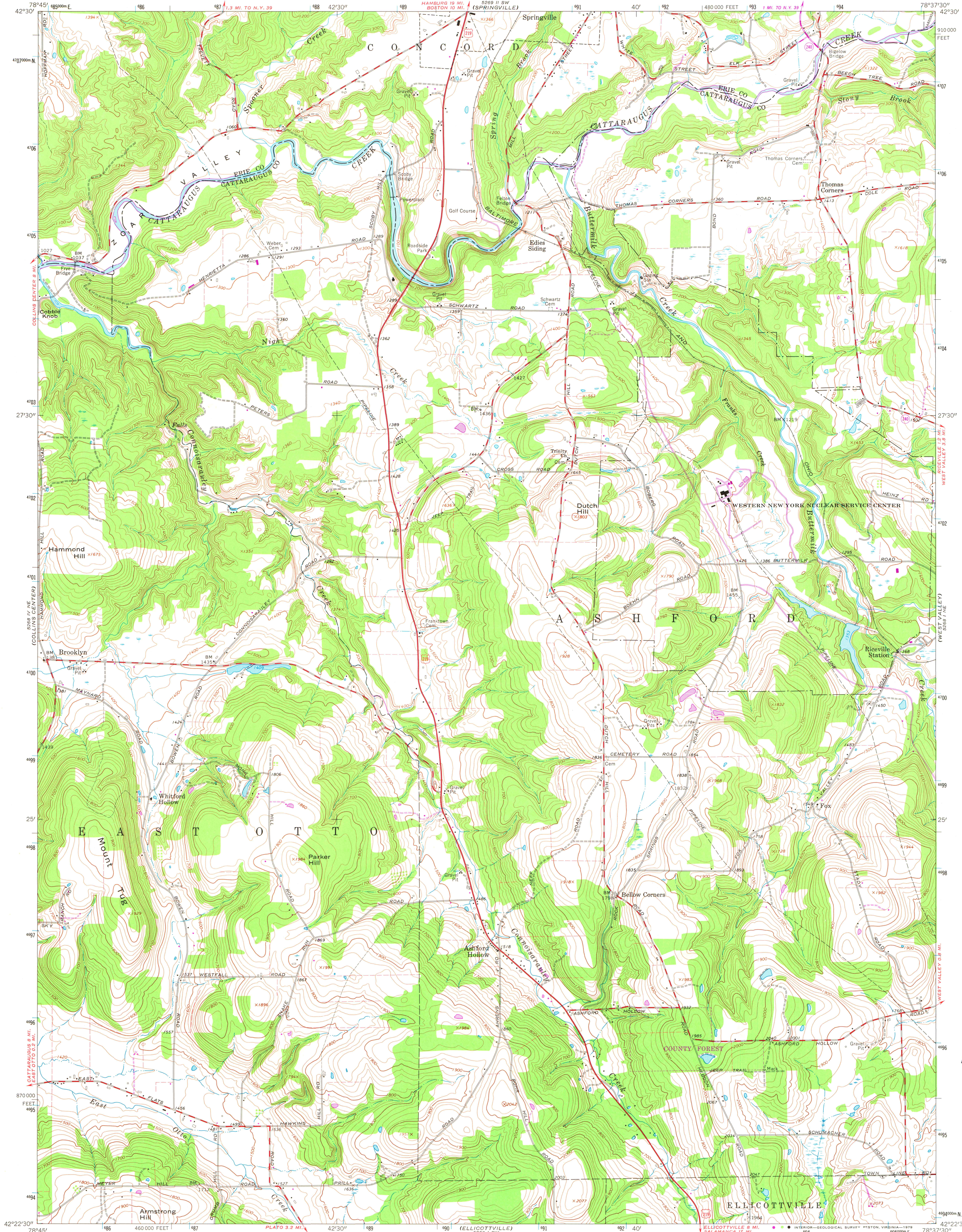
UNITED STATES
DEPARTMENT OF THE INTERIOR
GEOLOGICAL SURVEY



STATE OF NEW YORK
DEPARTMENT OF PUBLIC WORKS

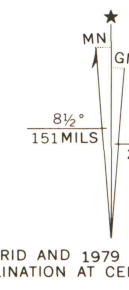
ASHFORD HOLLOW QUADRANGLE
NEW YORK
7.5 MINUTE SERIES (TOPOGRAPHIC)

588 11 SE
(CATTARAUGUS)



MAP AND AIR PHOTO
LIBRARY
MAY 9 1980
University of Wisconsin
Madison

Mapped, edited, and published by the Geological Survey
Control by USGS and USC&GS
Topography by photogrammetric methods from aerial photographs
taken 1962. Field checked 1964
Polyconic projection. 1927 North American datum
10,000-foot grid based on New York coordinate system, west zone
1000-meter Universal Transverse Mercator grid ticks,
zone 17, shown in blue
Fine red dashed lines indicate selected fence and field lines where
generally visible on aerial photographs. This information is unchecked
There may be private inholdings within the boundaries of
the National or State reservations shown on this map
Revisions shown in purple and woodland compiled from
aerial photographs taken 1976 and other source data
This information not field checked. Map edited 1979



SCALE 1:24,000
CONTOUR INTERVAL 20 FEET
NATIONAL GEODETIC VERTICAL DATUM OF 1929

ROAD CLASSIFICATION
Primary highway, all weather, improved surface
Secondary highway, all weather, unimproved road, fair or dry weather
Interstate Route U.S. Route State Route



ASHFORD HOLLOW, N. Y.
N4222.5—W7837.5/7.5

THIS MAP COMPLIES WITH NATIONAL MAP ACCURACY STANDARDS
FOR SALE BY U.S. GEOLOGICAL SURVEY, RESTON VIRGINIA 22092
A FOLDER DESCRIBING TOPOGRAPHIC MAPS AND SYMBOLS IS AVAILABLE ON REQUEST

1964
PHOTOREVISED 1979
AMS 5268 1 NW—SERIES V821