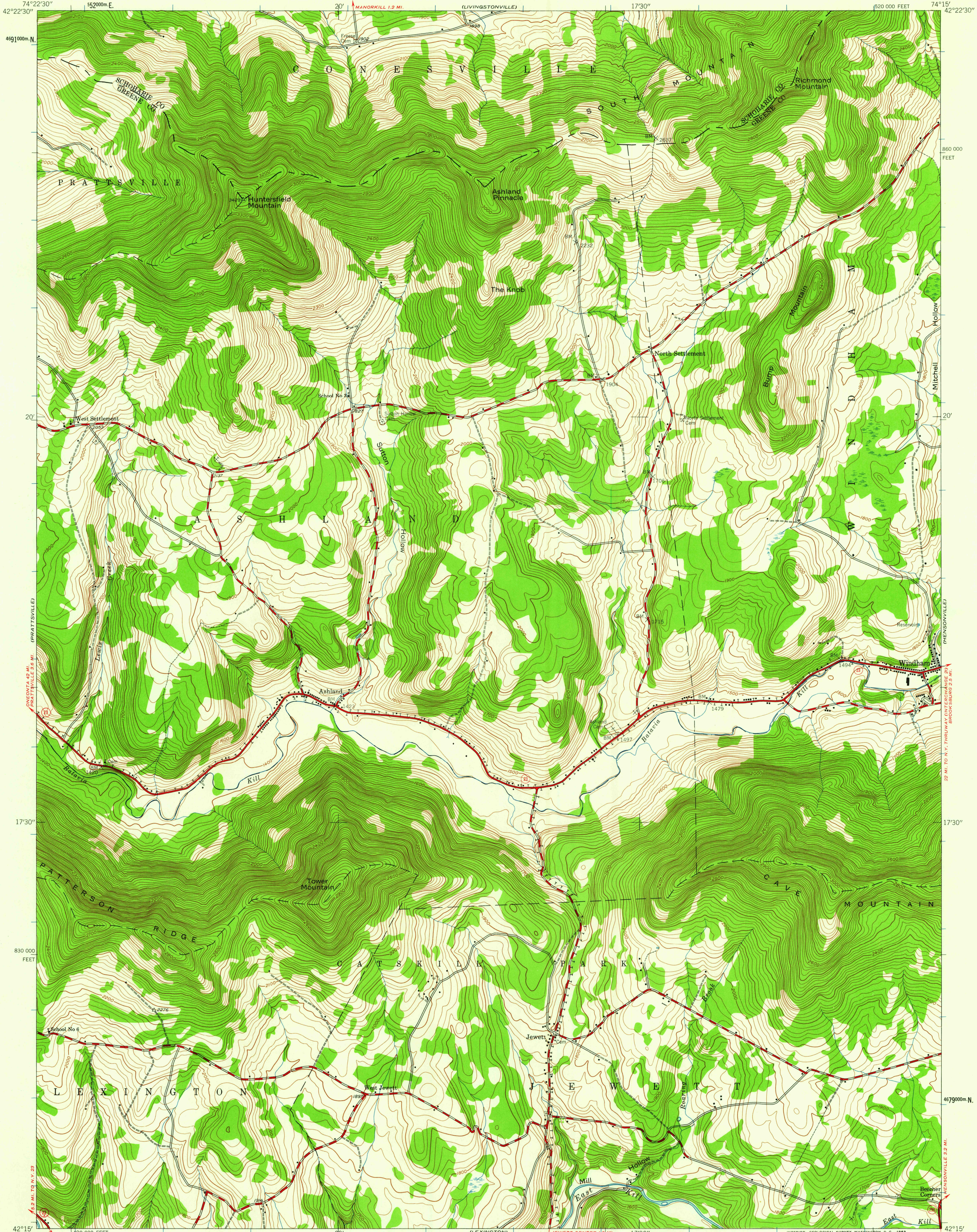


UNITED STATES
DEPARTMENT OF THE INTERIOR
GEOLOGICAL SURVEY

ASHLAND QUADRANGLE
NEW YORK
7.5 MINUTE SERIES (TOPOGRAPHIC)
SE/4 GILBOA 15' QUADRANGLE

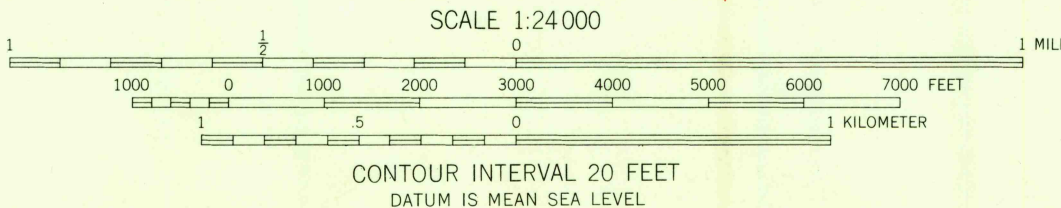
74°22'30"
42°22'30"
4691000m N

74°15'
42°22'30"



Map by the Army Map Service
Published for civil use by the Geological Survey
Control by USC&GS and TVA
Topography by photogrammetric methods from aerial
photographs taken 1943. Field checked 1945
Polyconic projection. 1927 North American datum
10,000-foot grid based on New York coordinate system,
east zone
1000-meter Universal Transverse Mercator grid ticks,
zone 18, shown in blue

124°
TRUE NORTH
MAGNETIC NORTH
APPROXIMATE MEAN
DECLINATION, 1945



THIS MAP COMPLIES WITH NATIONAL MAP ACCURACY STANDARDS
FOR SALE BY U.S. GEOLOGICAL SURVEY, WASHINGTON 25, D.C.
A FOLDER DESCRIBING TOPOGRAPHIC MAPS AND SYMBOLS IS AVAILABLE ON REQUEST

USGS
Historical File
Topographic Division



ROAD CLASSIFICATION
Heavy-duty ——— Light-duty ———
Medium-duty ——— Unimproved dirt ———
○ State Route

ASHLAND, N. Y.
SE/4 GILBOA 15' QUADRANGLE
N4215-W7415/7.5

1945

USGS
FILE COPY
TOPOGRAPHIC DIVISION

FEB 12 1963