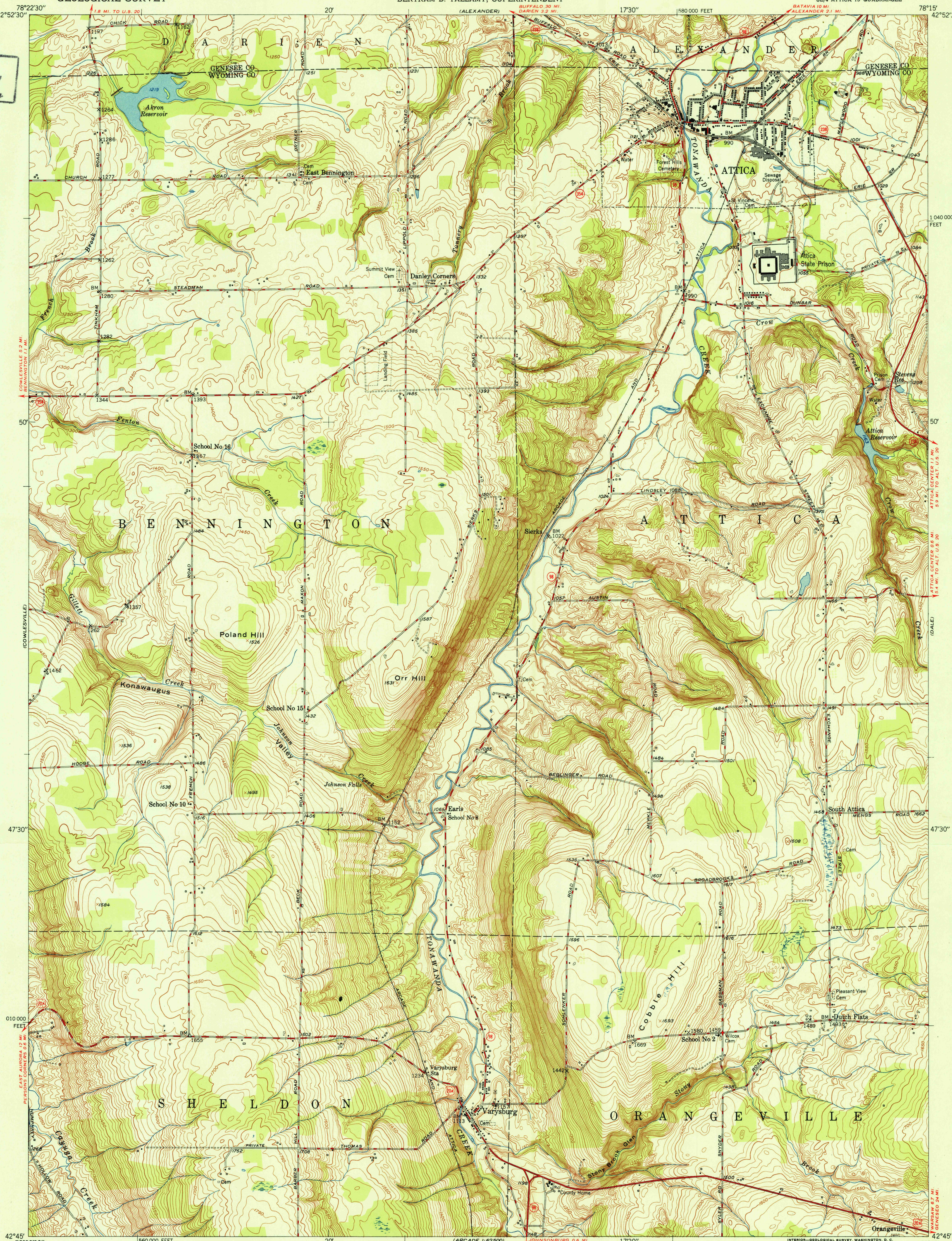
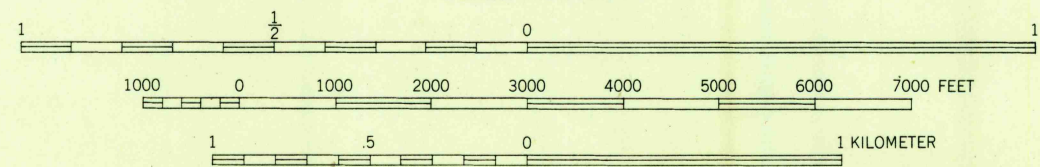


U. S. G. S.
FILE COPY
Inspection and Editing



Mapped, edited, and published by the Geological Survey
Control by USGS and USC&GS
Culture and drainage in part compiled by Corps of Engineers,
Dept. of the Army, from aerial photographs taken 1942
Topography by plane-table methods 1949
Polyconic projection. 1927 North American datum
10,000-foot grid based on New York coordinate system
west zone

TRUE NORTH
MAGNETIC NORTH
APPROXIMATE MEAN
DECLINATION, 1949



CONTOUR INTERVAL 10 FEET
DATUM IS MEAN SEA LEVEL

THIS MAP COMPLIES WITH NATIONAL MAP ACCURACY STANDARDS
FOR SALE BY U. S. GEOLOGICAL SURVEY, WASHINGTON 25, D. C.
A FOLDER DESCRIBING TOPOGRAPHIC MAPS AND SYMBOLS IS AVAILABLE ON REQUEST

USGS
Historical File
Topographic Division

ROAD CLASSIFICATION
HARD-SURFACE ALL WEATHER ROADS
Heavy-duty ——— LANE IS LANE
Medium-duty ——— LANE IS LANE
Loose-surface, graded, or narrow hard-surface ———
U. S. Route
State Route
DRY WEATHER ROADS
Improved dirt ———
Unimproved dirt ———

U. S. G. S.
FILE COPY
Inspection and Editing

ATTICA, N. Y.
SE/4 ATTICA 15' QUADRANGLE
N4245-W7815/7.5

EDITION OF 1951