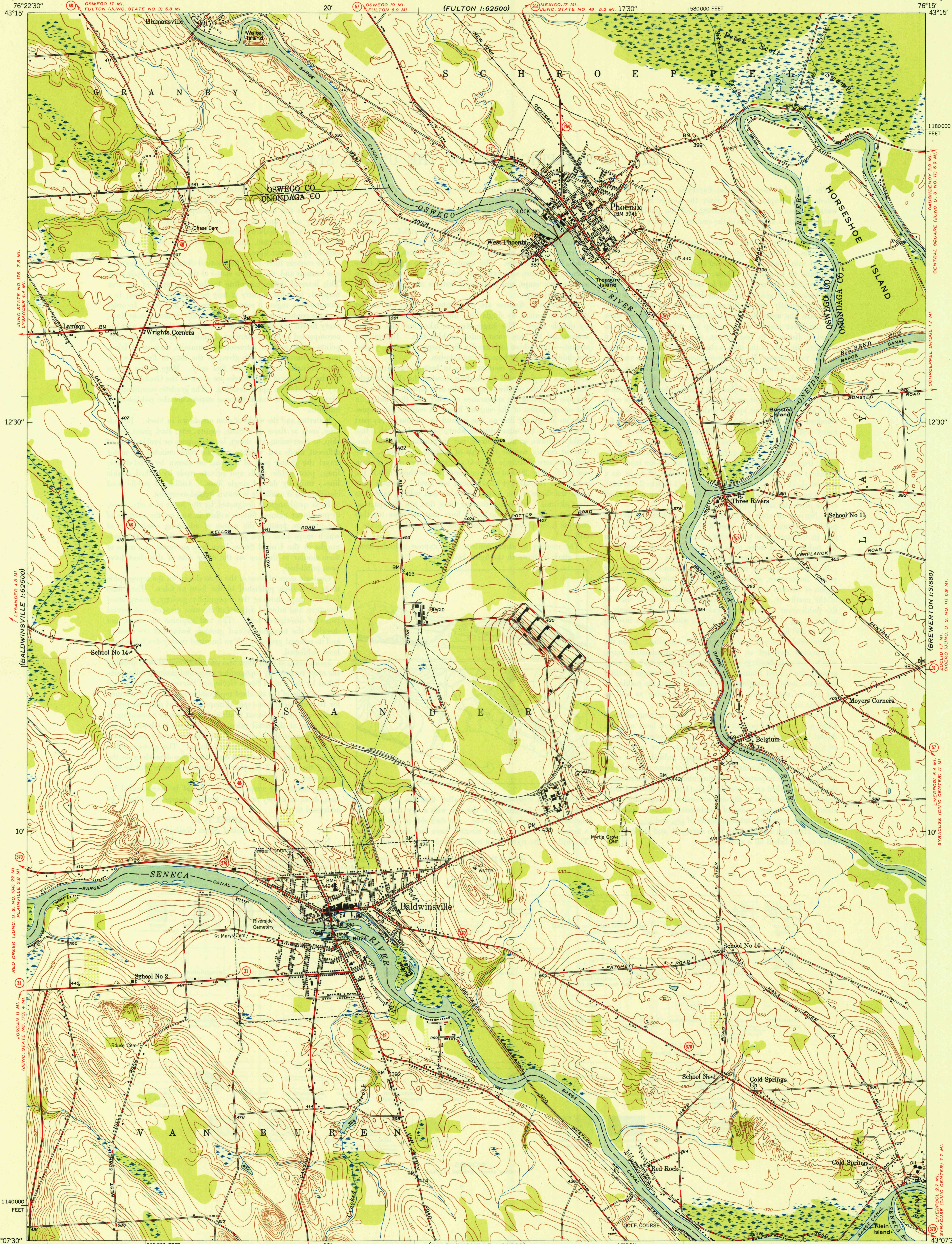


UNITED STATES  
DEPARTMENT OF THE INTERIOR  
GEOLOGICAL SURVEY

STATE OF NEW YORK  
DEPARTMENT OF PUBLIC WORKS  
CHAS. H. SELLS, SUPERINTENDENT  
B. D. TALLAMY, CHIEF ENGINEER

BALDWINSVILLE QUADRANGLE  
NEW YORK  
7.5 MINUTE SERIES (TOPOGRAPHIC)



U.S.G.S.  
FILE COPY  
Inspection and Editing

U.S.G.S.  
FILE COPY  
Inspection and Editing

Mapped, edited, and published by the Geological Survey  
Control by USGS, USC&GS, U. S. Lake Survey and TVA  
Culture and drainage in part compiled by Tennessee Valley Authority  
from aerial photographs taken 1942  
Topography by plane-table methods 1947  
Polyconic projection. 1927 North American datum  
10,000-foot grid based on New York coordinate system,  
Central zone

SCALE 1:24,000  
CONTOUR INTERVAL 10 FEET  
DATUM IS MEAN SEA LEVEL

THIS MAP COMPLIES WITH NATIONAL MAP ACCURACY STANDARDS  
FOR SALE BY U. S. GEOLOGICAL SURVEY, WASHINGTON 25, D. C.

U.S.G.S.  
FILE COPY  
Inspection and Editing

BALDWINSVILLE, N. Y.  
N4307.5-W7615/7.5  
PRINTED 1948

DEC 20 1948