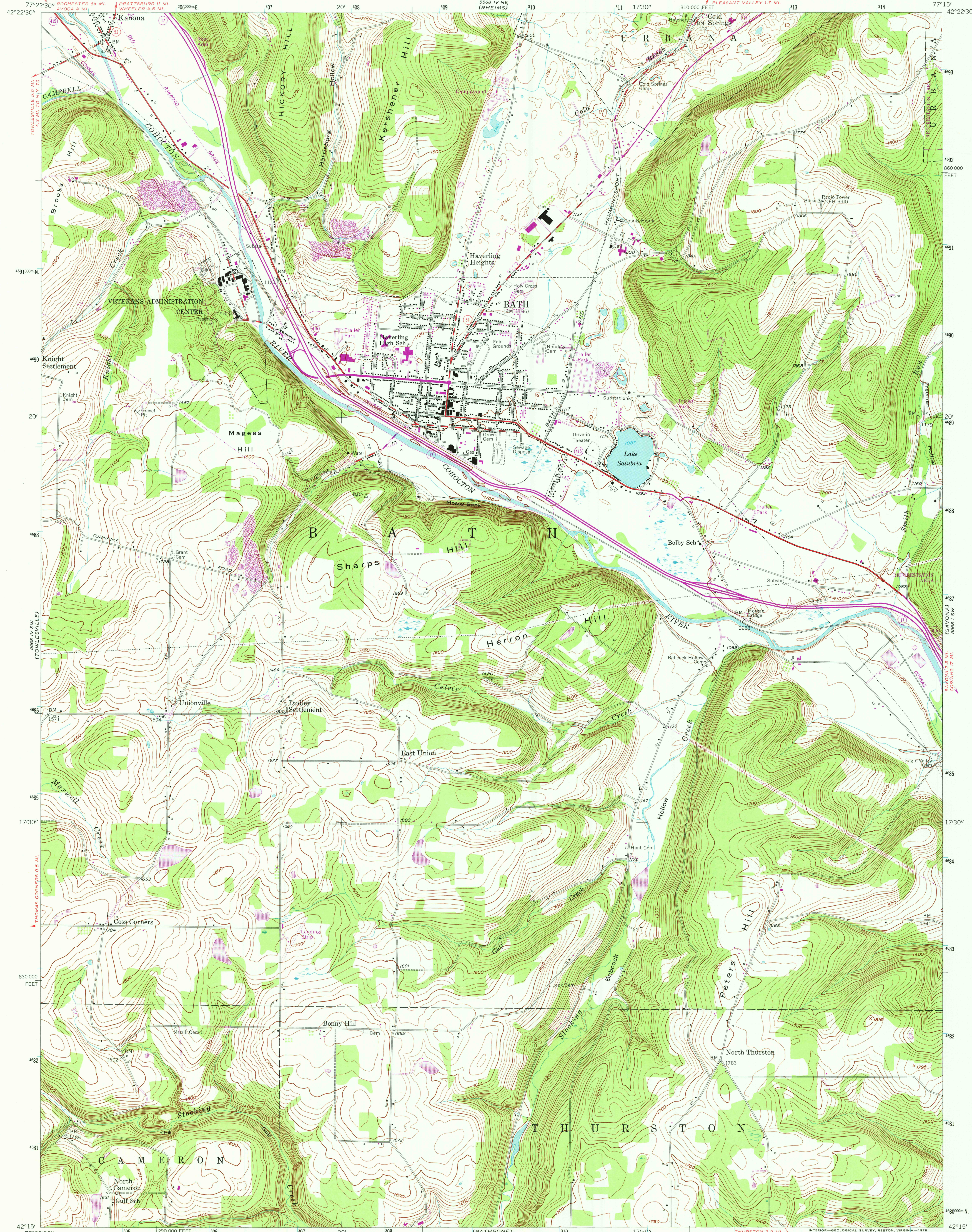
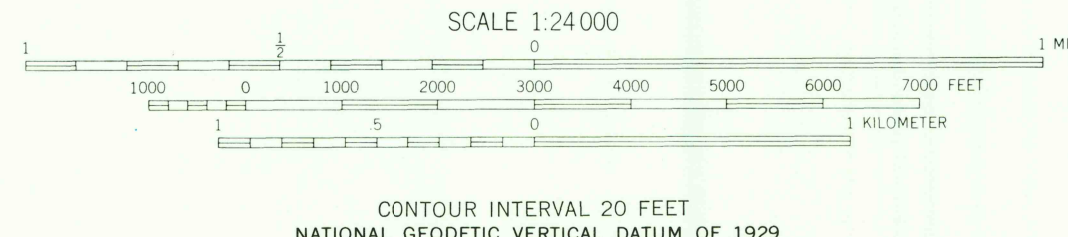
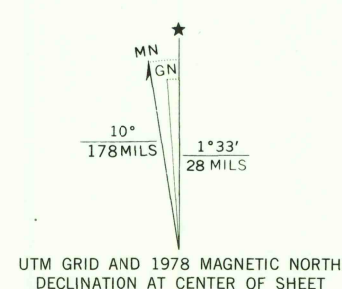


UNITED STATES  
DEPARTMENT OF THE INTERIOR  
GEOLOGICAL SURVEY

BATH QUADRANGLE  
NEW YORK—STEBEN CO.  
7.5 MINUTE SERIES (TOPOGRAPHIC)



Mapped, edited, and published by the Geological Survey  
Control by USGS and USC&GS  
Topography from aerial photographs by multiplex methods  
Aerial photographs taken 1952. Field check 1953  
Polyconic projection. 1927 North American datum  
10,000-foot grid based on New York coordinate system,  
central zone  
Unchecked elevations are shown in brown  
1000-meter Universal Transverse Mercator grid ticks,  
zone 18, shown in blue  
Revisions shown in purple and woodland compiled from  
aerial photographs taken 1976 and other source data.  
This information not field checked. Map edited 1978



ROAD CLASSIFICATION  
Heavy-duty ——— Light-duty ———  
Medium-duty ——— Unimproved dirt ———  
U.S. Route ——— State Route ———  
USGS  
Historical File  
Topographic Division  
BATH, N. Y.  
N4215—W7715/7.5  
1953  
PHOTOREVISED 1978  
AMS 5568 IV SE—SERIES V821

MAR 15 1978  
3450