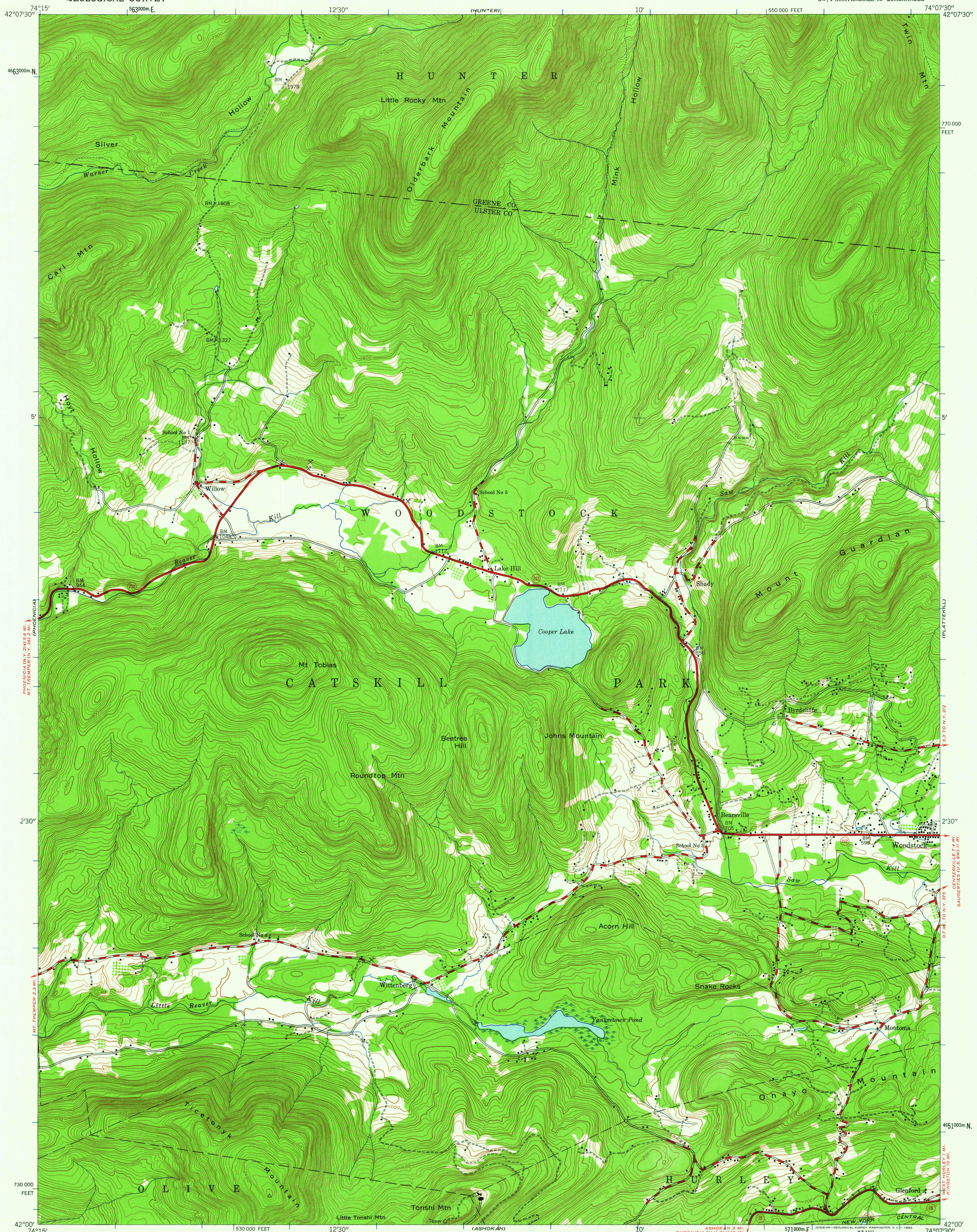


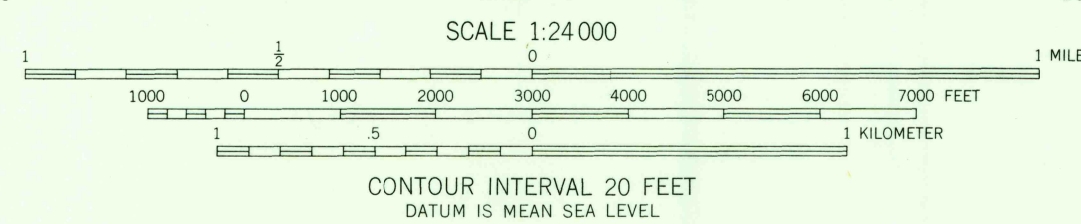
UNITED STATES  
DEPARTMENT OF THE INTERIOR  
GEOLOGICAL SURVEY

BEARSVILLE QUADRANGLE  
NEW YORK  
7.5 MINUTE SERIES (TOPOGRAPHIC)  
SW/4 KAATERSKILL 15' QUADRANGLE



Mapped by the Army Map Service  
Published for civil use by the Geological Survey  
Control by USC&GS and TVA  
Topography from aerial photographs by photogrammetric methods  
Aerial photographs taken 1943. Field checked 1945  
Polyconic projection. 1927 North American datum.  
10,000-foot grid based on New York coordinate system, east zone  
1000-meter Universal Transverse Mercator grid ticks,  
zone 18, shown in blue

APPROXIMATE MEAN  
DECLINATION, 1945



ROAD CLASSIFICATION  
Heavy-duty ——— Light-duty ———  
Medium-duty ——— Unimproved dirt ———  
State Route

BEARSVILLE, N. Y.  
SW/4 KAATERSKILL 15' QUADRANGLE  
N4200-W7407.5/7.5  
1945

THIS MAP COMPLIES WITH NATIONAL MAP ACCURACY STANDARDS  
FOR SALE BY U. S. GEOLOGICAL SURVEY, WASHINGTON 25, D. C.  
A FOLDER DESCRIBING TOPOGRAPHIC MAPS AND SYMBOLS IS AVAILABLE ON REQUEST