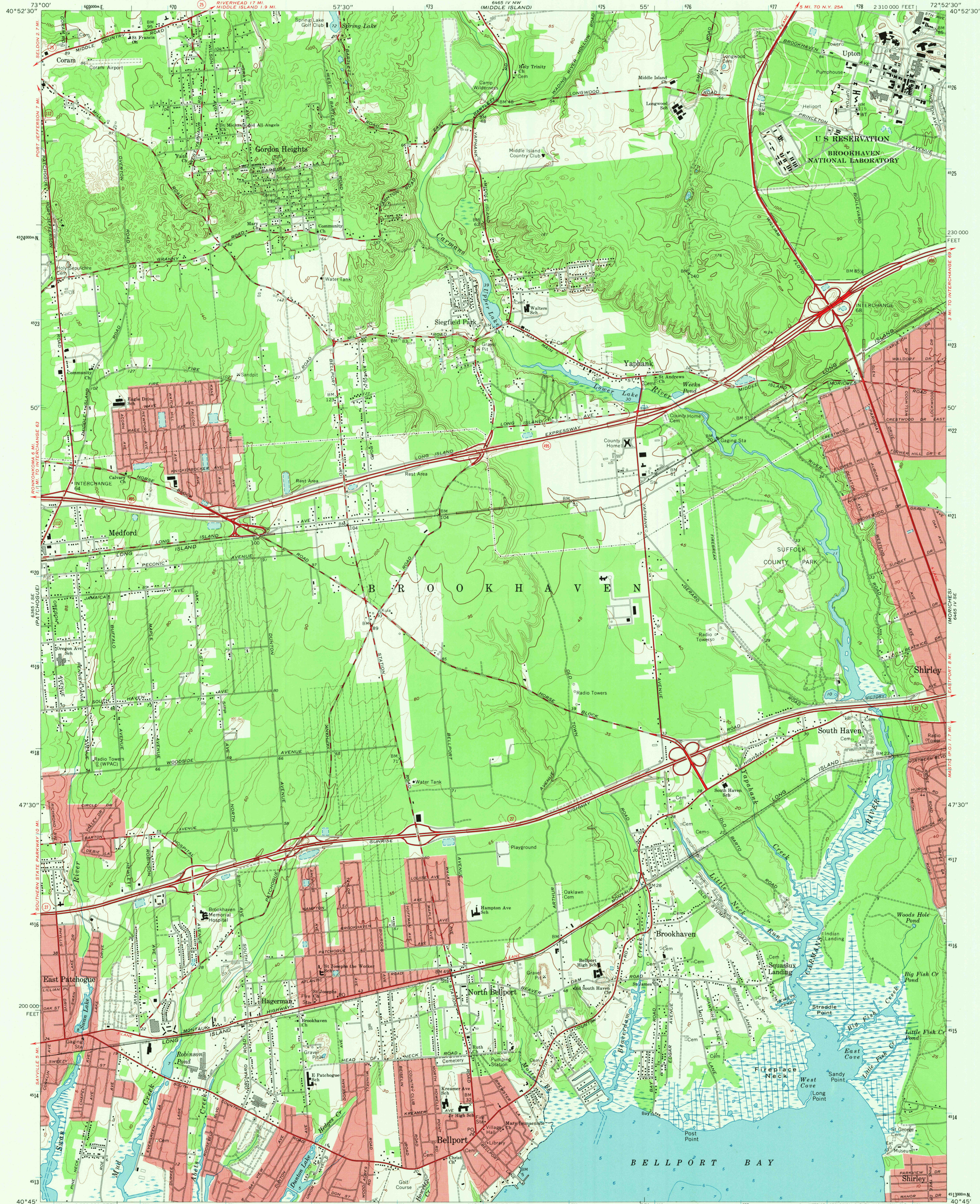


UNITED STATES
DEPARTMENT OF THE INTERIOR
GEOLOGICAL SURVEY

BELLPORT QUADRANGLE
NEW YORK-SUFFOLK CO.
7.5 MINUTE SERIES (TOPOGRAPHIC)
SW/4 MORICHES 15' QUADRANGLE



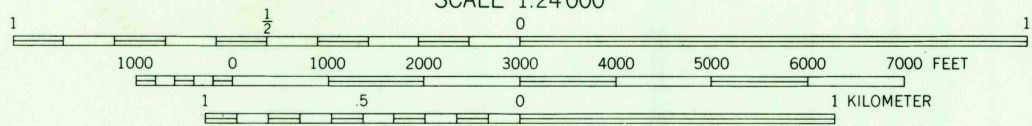
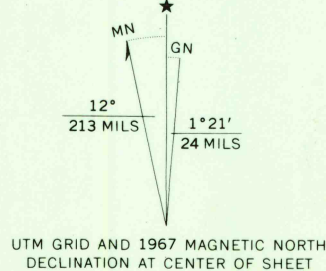
Mapped, edited, and published by the Geological Survey
Revised in cooperation with New York Department of Transportation
Control by USGS and USC&GS

Planimetry by photogrammetric methods from aerial photographs taken
1955. Topography by planimetric surveys 1956. Revised from
aerial photographs taken 1966. Field checked 1967

Selected hydrographic data compiled from USC&GS chart 120SC (1966)
This information is not intended for navigational purposes

Polyconic projection. 1927 North American datum
10,000-foot grid based on New York coordinate system, Long Island zone
100-meter Universal Transverse Mercator grid ticks,
zone 18, shown in blue

Fine red dashed lines indicate selected fence and field lines where
generally visible on aerial photographs. This information is unchecked
Red ticks indicate areas in which only landmark buildings are shown



CONTOUR INTERVAL 10 FEET
DOTTED LINES REPRESENT 5 FOOT CONTOURS
DATUM IS MEAN SEA LEVEL
DEPTH CURVES AND SOUNDINGS IN FEET—DATUM IS MEAN LOW WATER
SHORELINE SHOWN REPRESENTS THE APPROXIMATE LINE OF MEAN HIGH WATER
THE MEAN RANGE OF TIDE IS APPROXIMATELY 0.8 FEET

THIS MAP COMPLIES WITH NATIONAL MAP ACCURACY STANDARDS
FOR SALE BY U. S. GEOLOGICAL SURVEY, WASHINGTON, D. C. 20242
A FOLDER DESCRIBING TOPOGRAPHIC MAPS AND SYMBOLS IS AVAILABLE ON REQUEST

USGS
Historical File
Topographic Division



U.S.G.S.
FILE COPY
TOPOGRAPHIC DIVISION

ROAD CLASSIFICATION
Heavy-duty ——— Light-duty ———
Medium-duty ——— Unimproved dirt ———
State Route ———

BELLPORT, N. Y.
SW/4 MORICHES 15' QUADRANGLE
N4045—W7252.5/7.5
1967
AMS 6465 IV SW—SERIES V821

4080
DEC 4 1970