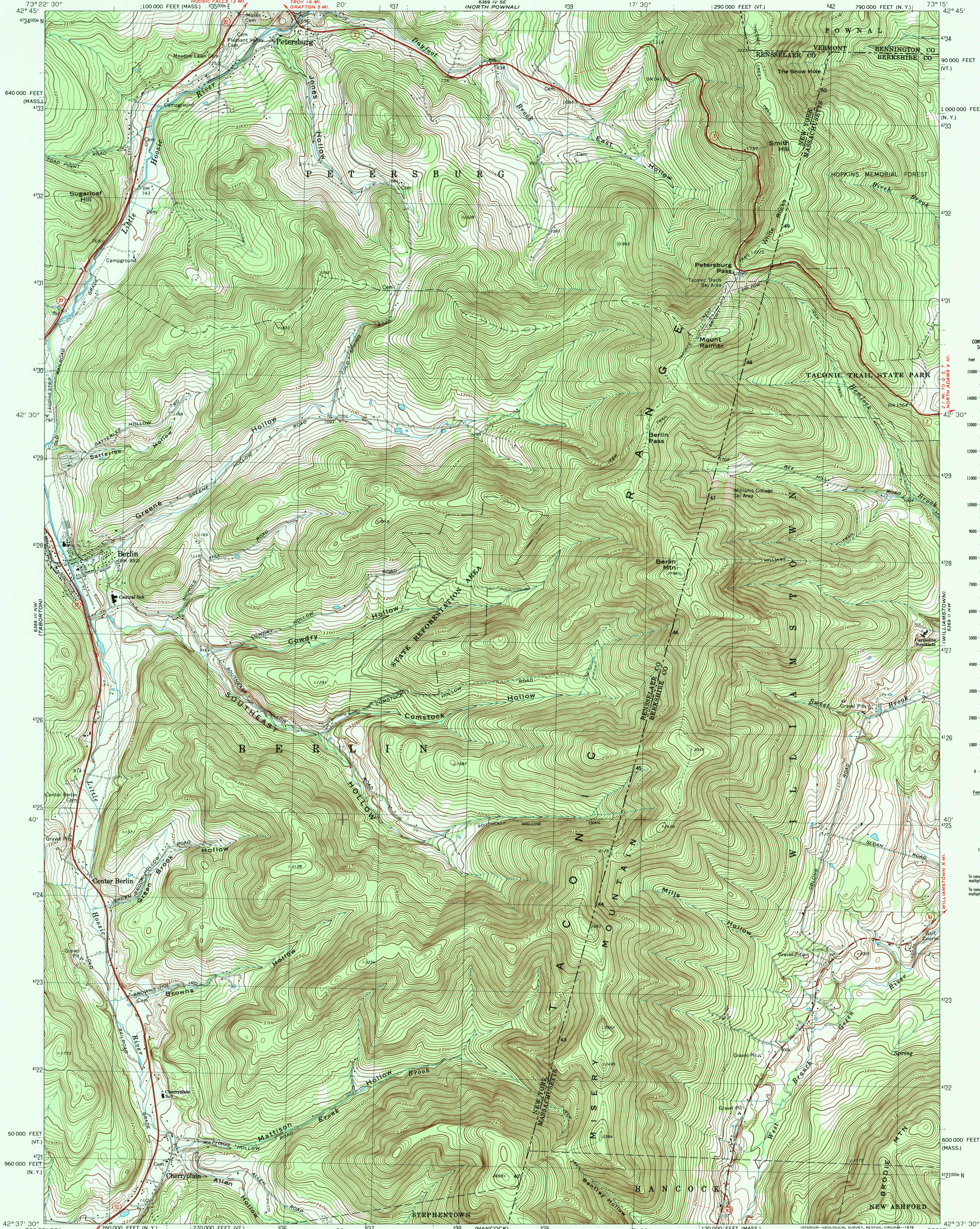


UNITED STATES  
DEPARTMENT OF THE INTERIOR  
GEOLOGICAL SURVEY

BERLIN QUADRANGLE  
NEW YORK-MASSACHUSETTS-VERMONT  
7.5 MINUTE SERIES (TOPOGRAPHIC)



CONVERSION  
SCALES

Feet	Meters
15000	4500
14000	4000
13000	3500
12000	3000
11000	2500
10000	2000
9000	1500
8000	1000
7000	500
6000	0
5000	0
4000	0
3000	0
2000	0
1000	0
0	0

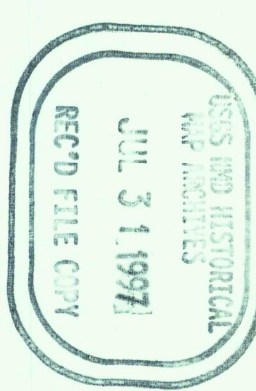
To convert feet to meters  
multiply by 3.048

To convert meters to feet  
multiply by 3.2808

Feet	Meters
1	3048
2	6096
3	9144
4	12192
5	15240
6	18288
7	21336
8	24384
9	27432
10	30480

To convert feet to meters  
multiply by 3.048

To convert meters to feet  
multiply by 3.2808



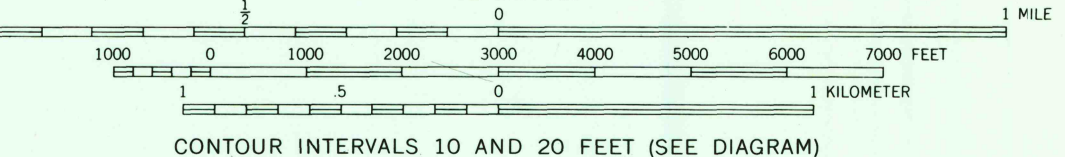
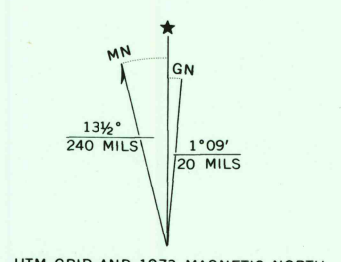
Mapped, edited, and published by the Geological Survey  
Revised in cooperation with Massachusetts Department  
of Public Works

Control by USGS, USC&GS, and Massachusetts Geodetic Survey

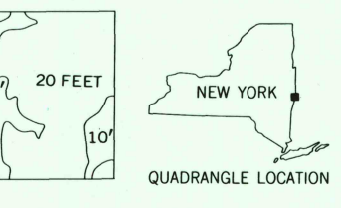
Planimetry by photogrammetric methods from aerial photographs  
taken 1942. Topography by planimetric surveys 1944. Revised from  
aerial photographs taken 1972. Field checked 1973

Polyconic projection. 1927 North American datum  
10,000-foot grids based on New York coordinate system, east zone,  
Massachusetts coordinate system, mainland zone,  
and Vermont coordinate system  
1000-meter Universal Transverse Mercator grid,  
zone 18

Fine red dashed lines indicate selected fence and field lines where  
generally visible on aerial photographs. This information is unchecked



SCALE 1:24,000  
CONTOUR INTERVALS 10 AND 20 FEET (SEE DIAGRAM)  
NATIONAL GEODETIC VERTICAL DATUM OF 1929



ROAD CLASSIFICATION

Primary highway, hard surface	Light-duty road, hard or improved surface
Secondary highway, hard surface	Unimproved road
Interstate Route	U. S. Route
	State Route

BERLIN, N. Y. - MASS. - VT.  
N4237.5-W7315.7.5

1973

AMS 6369 III NE-SERIES V821

