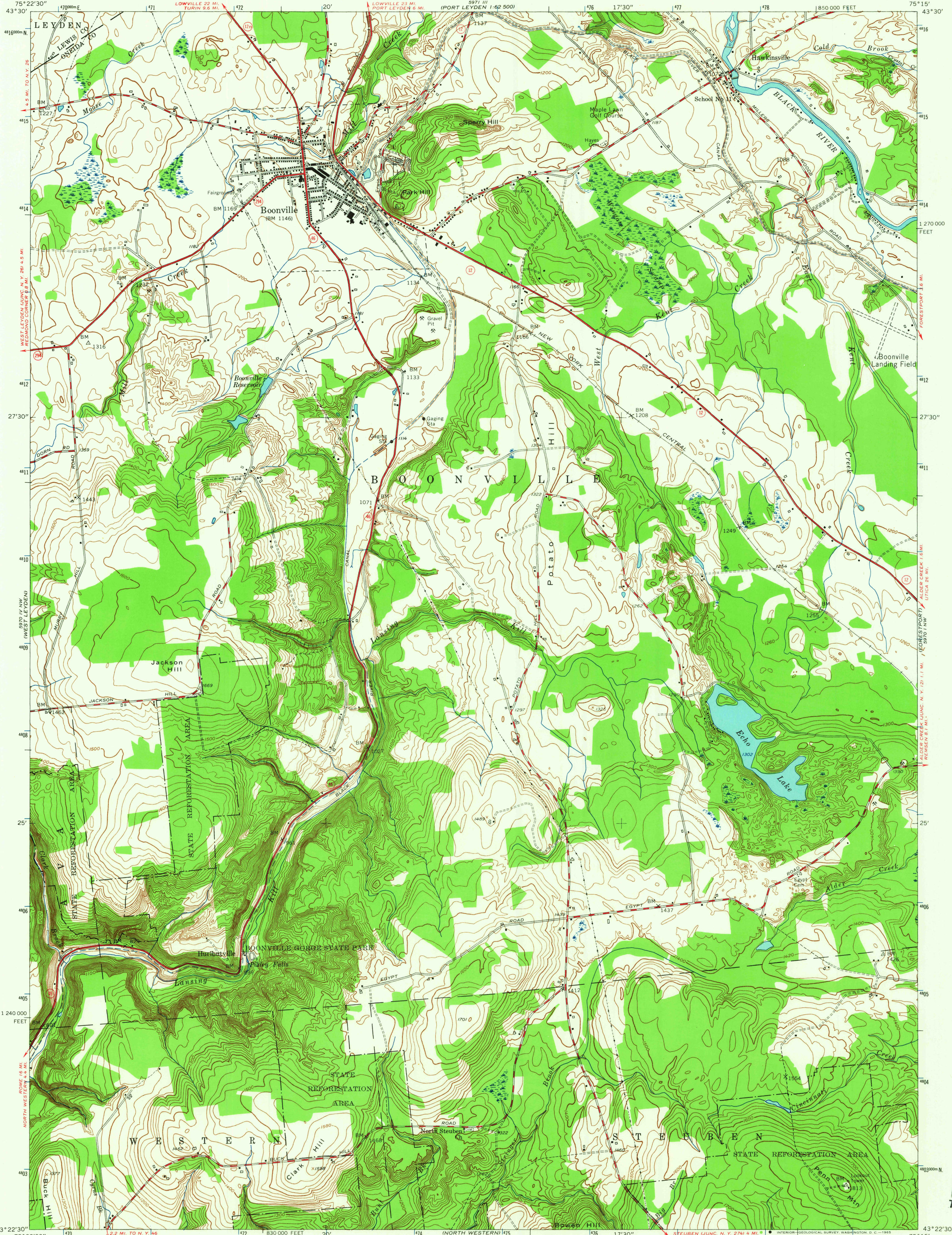


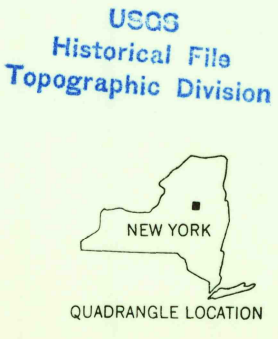
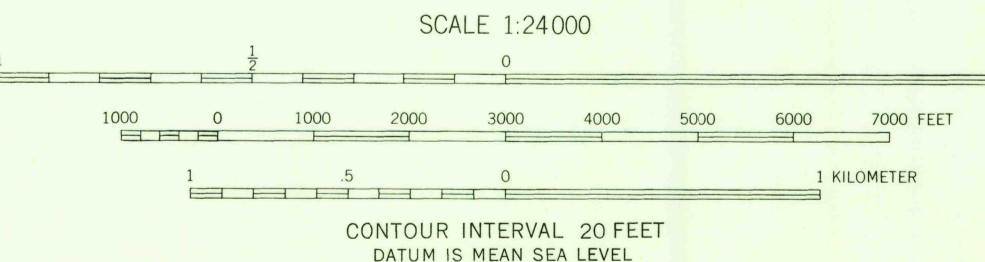
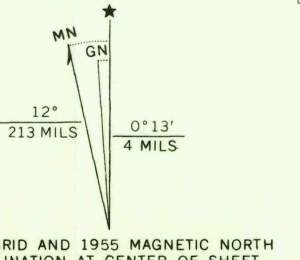
UNITED STATES  
DEPARTMENT OF THE INTERIOR  
GEOLOGICAL SURVEY

BOONVILLE QUADRANGLE  
NEW YORK  
7.5 MINUTE SERIES (TOPOGRAPHIC)

5970 IV  
KEEER  
1:62,500



Mapped, edited, and published by the Geological Survey  
Control by USGS and USC&GS  
Culture and drainage in part compiled from aerial photographs  
taken 1941. Topography by planetable surveys 1945. Revised 1955  
Polyconic projection. 1927 North American datum  
10,000-foot grid based on New York coordinate system,  
central zone  
1000-meter Universal Transverse Mercator grid ticks,  
zone 18, shown in blue



ROAD CLASSIFICATION	
Heavy-duty	Light-duty
Medium-duty	Unimproved dirt
U. S. Route	State Route

BOONVILLE, N. Y.  
N4322.5-W7515.7.5

1955

AMS 5970 IV NE-SERIES V821

THIS MAP COMPLIES WITH NATIONAL MAP ACCURACY STANDARDS  
FOR SALE BY U. S. GEOLOGICAL SURVEY, WASHINGTON, D. C. 20242  
A FOLDER DESCRIBING TOPOGRAPHIC MAPS AND SYMBOLS IS AVAILABLE ON REQUEST

U.S.G.S.  
FILE COPY  
TOPOGRAPHIC DIVISION

DEC 17 1965

3705