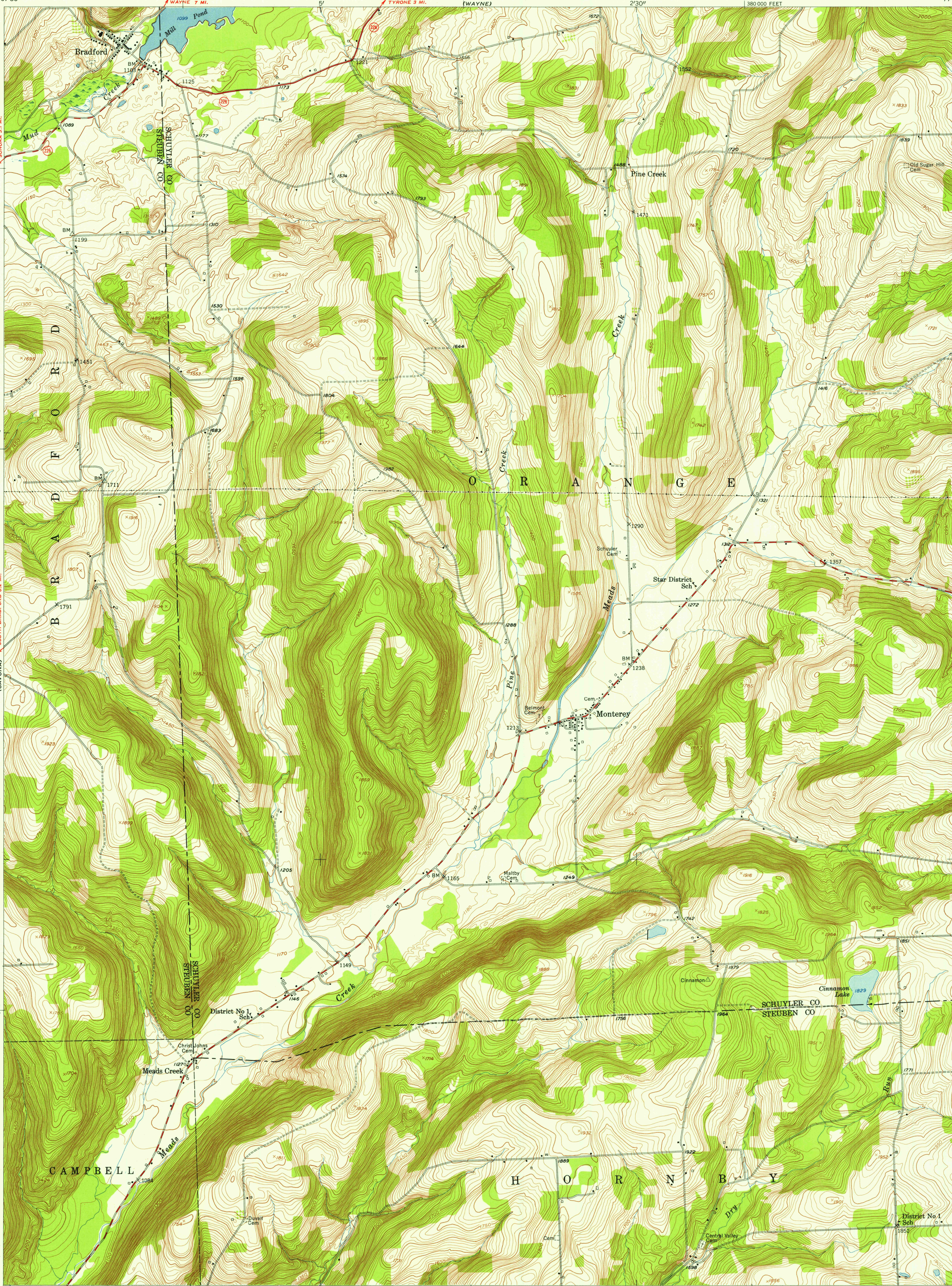


UNITED STATES
DEPARTMENT OF THE INTERIOR
GEOLOGICAL SURVEY

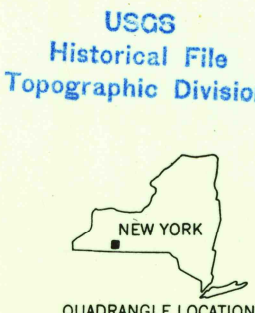
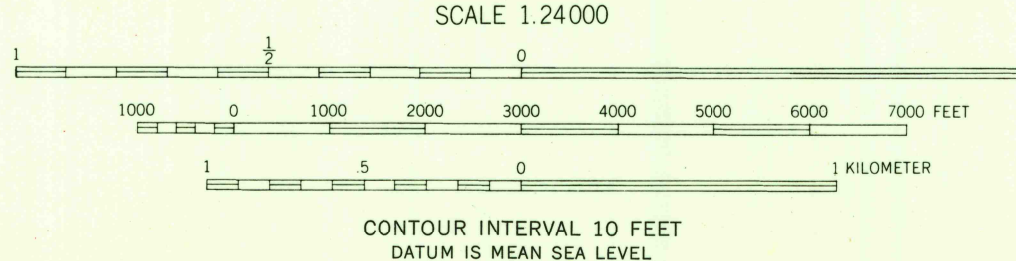
BRADFORD QUADRANGLE
NEW YORK
7.5 MINUTE SERIES (TOPOGRAPHIC)
SE/4 HAMMONDSPORT 15' QUADRANGLE

U.S.G.S.
FILE COPY
TOPOGRAPHIC DIVISION

U.S.G.S.
FILE COPY
TOPOGRAPHIC DIVISION



Mapped, edited, and published by the Geological Survey
Control by USGS and USC&GS
Topography from aerial photographs by multiplex methods
Aerial photographs taken 1942 and 1944. Field check 1953
Polyconic projection. 1927 North American datum
10,000-foot grid based on New York coordinate system,
central zone



ROAD CLASSIFICATION
Heavy-duty _____ Light-duty _____
Medium-duty _____ Unimproved dirt _____
U. S. Route _____ State Route _____

BRADFORD, N. Y.
SE/4 HAMMONDSPORT 15' QUADRANGLE
N 4215-W 7700/7.5

1953

MAY 20 1955

3095