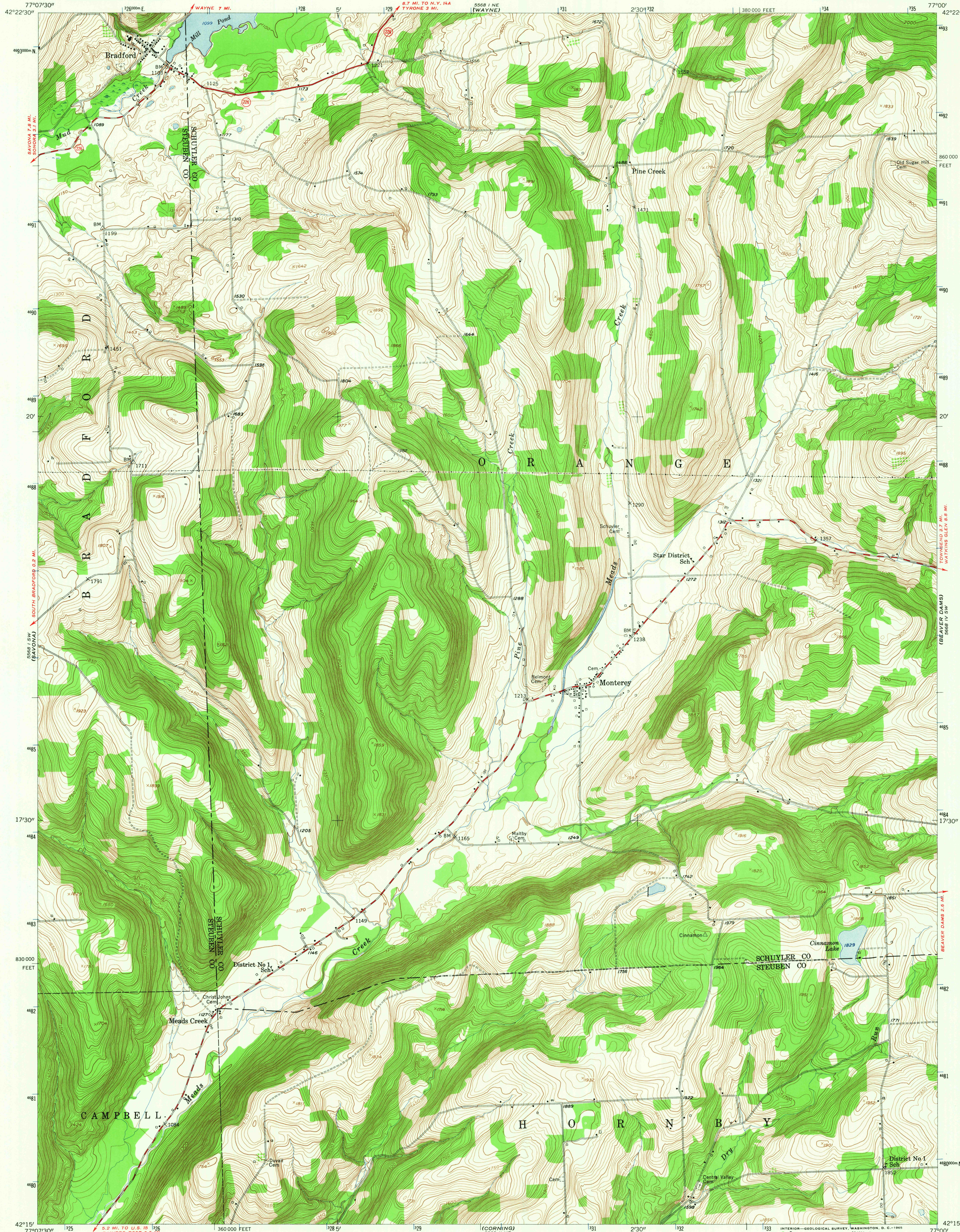
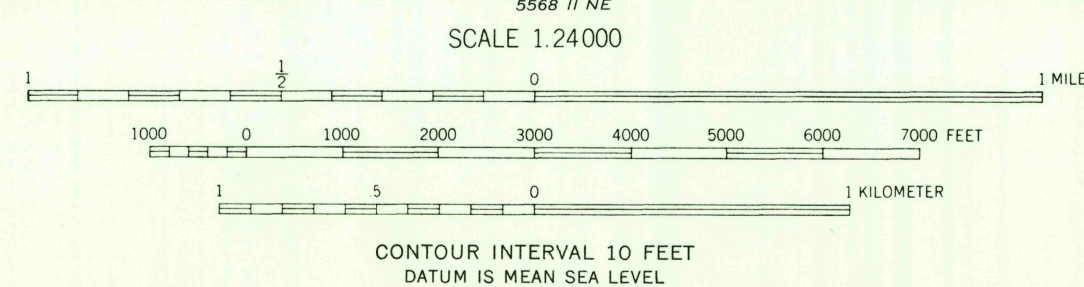
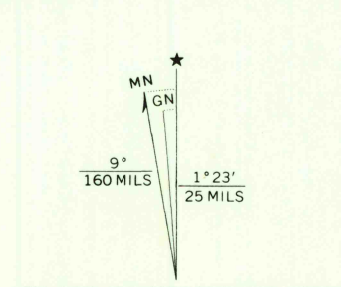


5668 1/4 NW  
(READING CENTER)



Mapped, edited, and published by the Geological Survey  
Control by USGS and USC&GS  
Topography from aerial photographs by multiplex methods  
Aerial photographs taken 1942 and 1944. Field check 1953  
Polyconic projection. 1927 North American datum  
10,000-foot grid based on New York coordinate system,  
central zone  
1000-meter Universal Transverse Mercator grid ticks,  
zone 18, shown in blue



ROAD CLASSIFICATION

Heavy-duty	Light-duty
Medium-duty	Unimproved dirt
U. S. Route	State Route

BRADFORD, N. Y.  
SE/4 HAMMONDSPORT 15' QUADRANGLE  
N 4215-W 7700/7.5  
1953  
AMS 5568 I SE-SERIES V821

U.S.G.S.  
FILE COPY  
TOPOGRAPHIC DIVISION