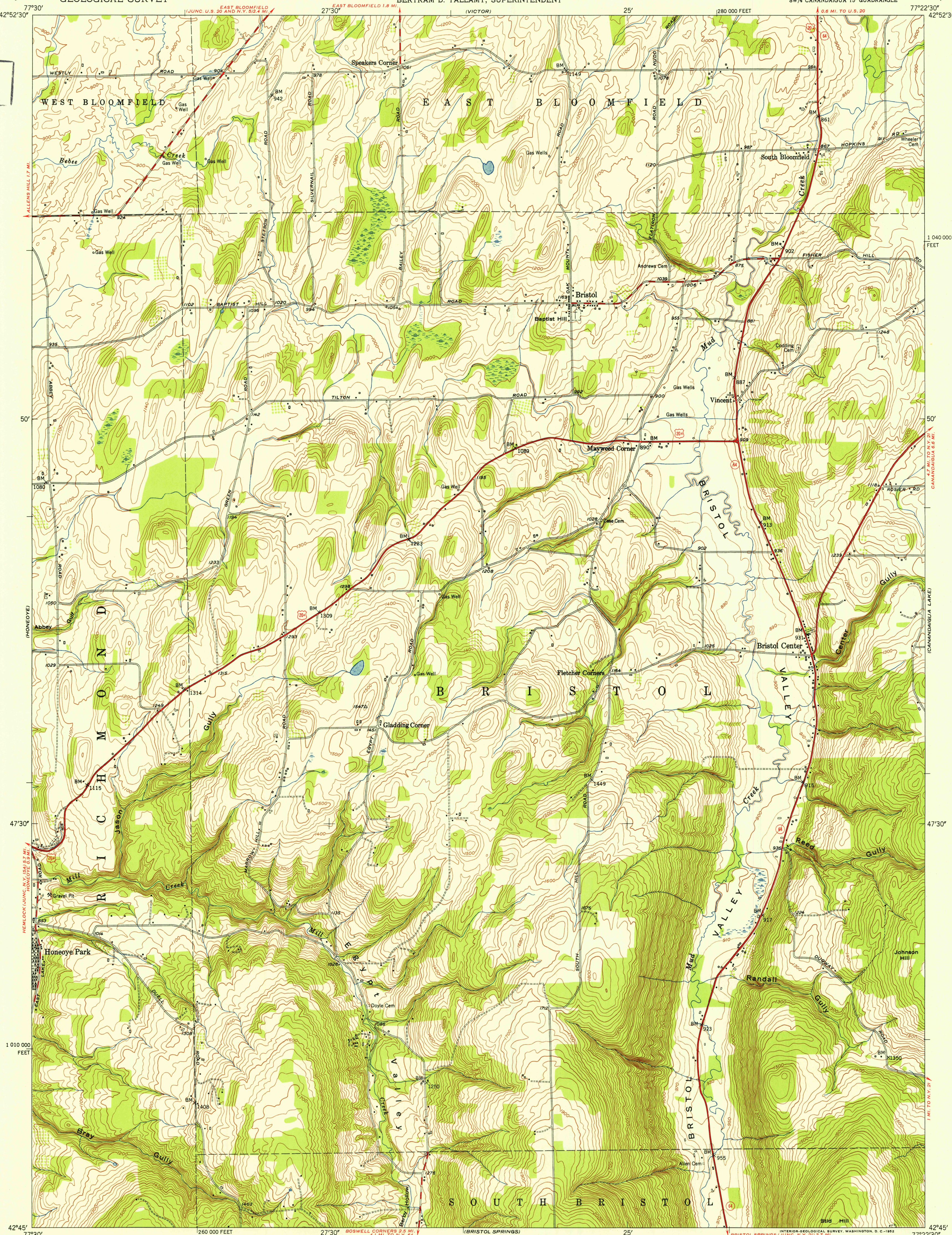
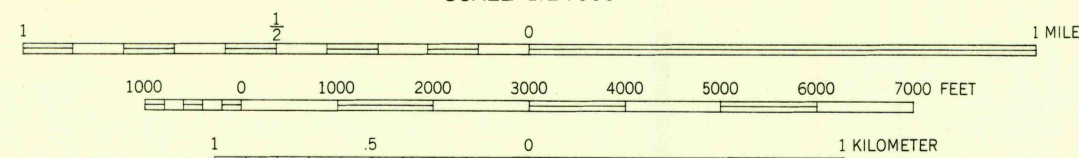


U.S.G.S.
FILE COPY
Inspection and Editing.



Mapped, edited, and published by the Geological Survey
Control by USGS and USCGS
Culture and drainage in part compiled by Corps of Engineers,
Dept. of the Army, from aerial photographs taken 1942
Topography by plane-table methods 1951
Polyconic projection, 1927 North American datum
10,000-foot grid based on New York coordinate system,
central zone



CONTOUR INTERVAL 20 FEET
DOTTED LINES REPRESENT HALF-INTERVAL CONTOURS
DATUM IS MEAN SEA LEVEL

THIS MAP COMPLIES WITH NATIONAL MAP ACCURACY STANDARDS
FOR SALE BY U. S. GEOLOGICAL SURVEY, WASHINGTON 25, D. C.
A FOLDER DESCRIBING TOPOGRAPHIC MAPS AND SYMBOLS IS AVAILABLE ON REQUEST

ROAD CLASSIFICATION
Heavy-duty... 4 LANE 16 LANE Light-duty...
Medium-duty... 4 LANE 6 LANE Unimproved dirt...
U. S. Route State Route

BRISTOL CENTER, N. Y.
SW/4 CANANDAIGUA 15' QUADRANGLE
N4245-W7722.5/7.5

1951

U.S.G.S.
FILE COPY
Inspection and Editing.

NOV 20 1952