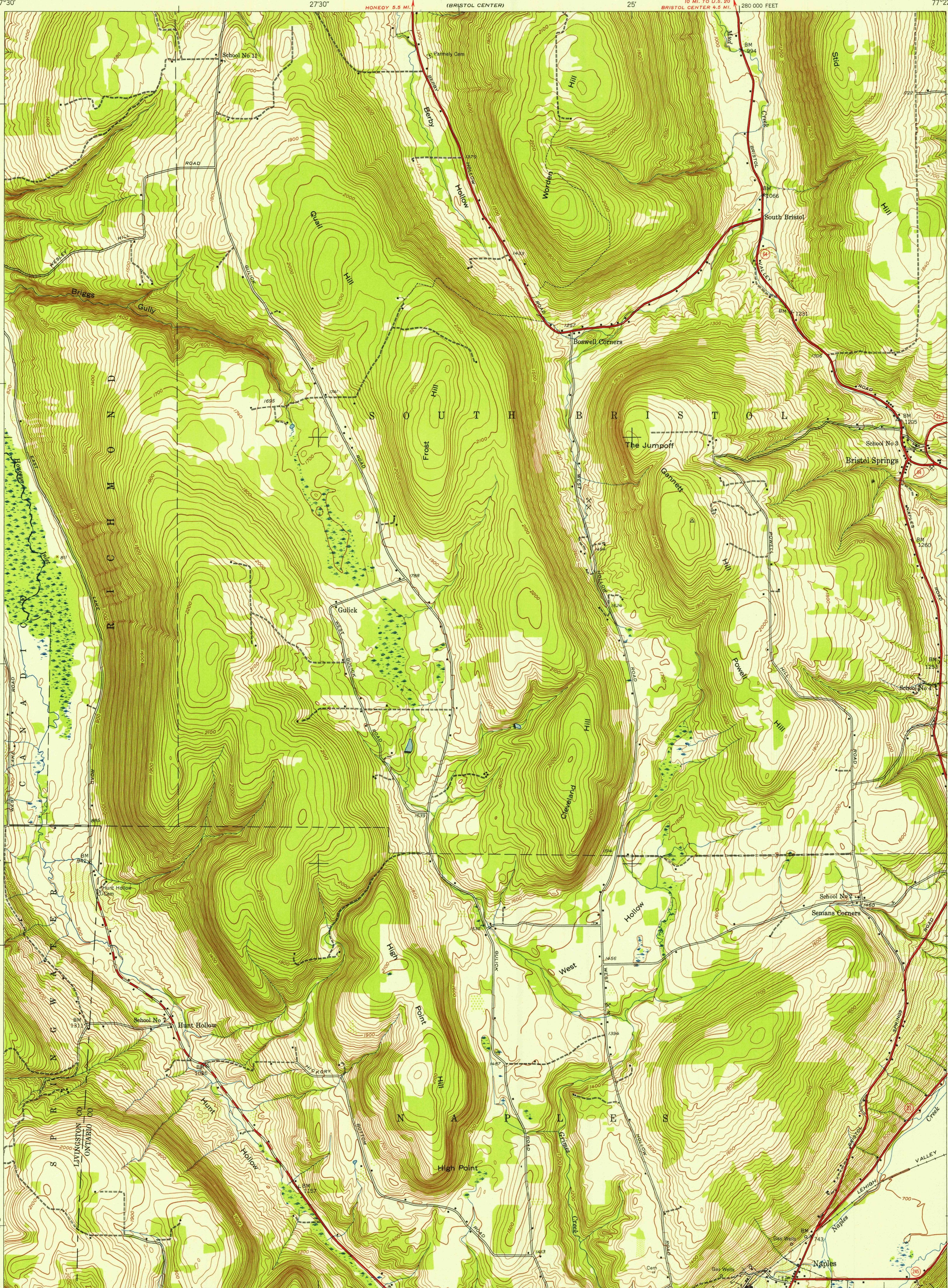


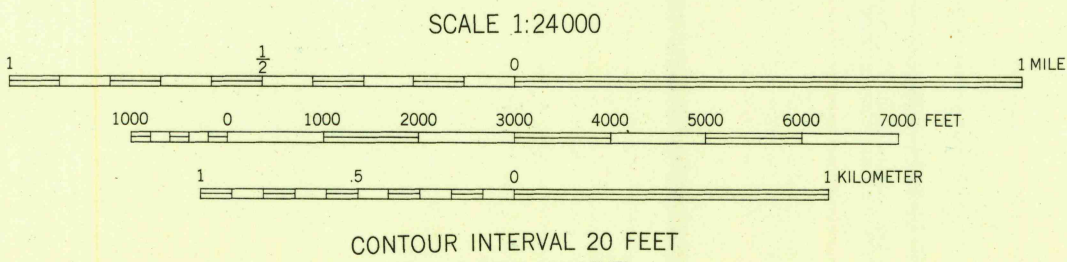
FILE COPY
Inspection and Editing

FILE COPY
Inspection and Editing



Mapped by the Army Map Service
Published for civil use by the Geological Survey
Control by USGS USC&GS, and TVA
Topography from aerial photographs by multiplex methods
Aerial photographs taken 1942. Field check 1943
Polyconic projection. 1927 North American datum
10,000-foot grid based on New York coordinate system,
central zone

TRUE NORTH
MAGNETIC NORTH
APPROXIMATE MEAN
DECLINATION, 1943



USGS
Historical File
Topographic Division



ROAD CLASSIFICATION
Heavy-duty 4 LANE 6 LANE Light-duty
Medium-duty 4 LANE 6 LANE Unimproved dirt
U. S. Route State Route

BRISTOL SPRINGS, N. Y.
NW/4 NAPLES 15' QUADRANGLE
N4237.5-W7722.5/7.5

1943

JAN 5 1954

2650