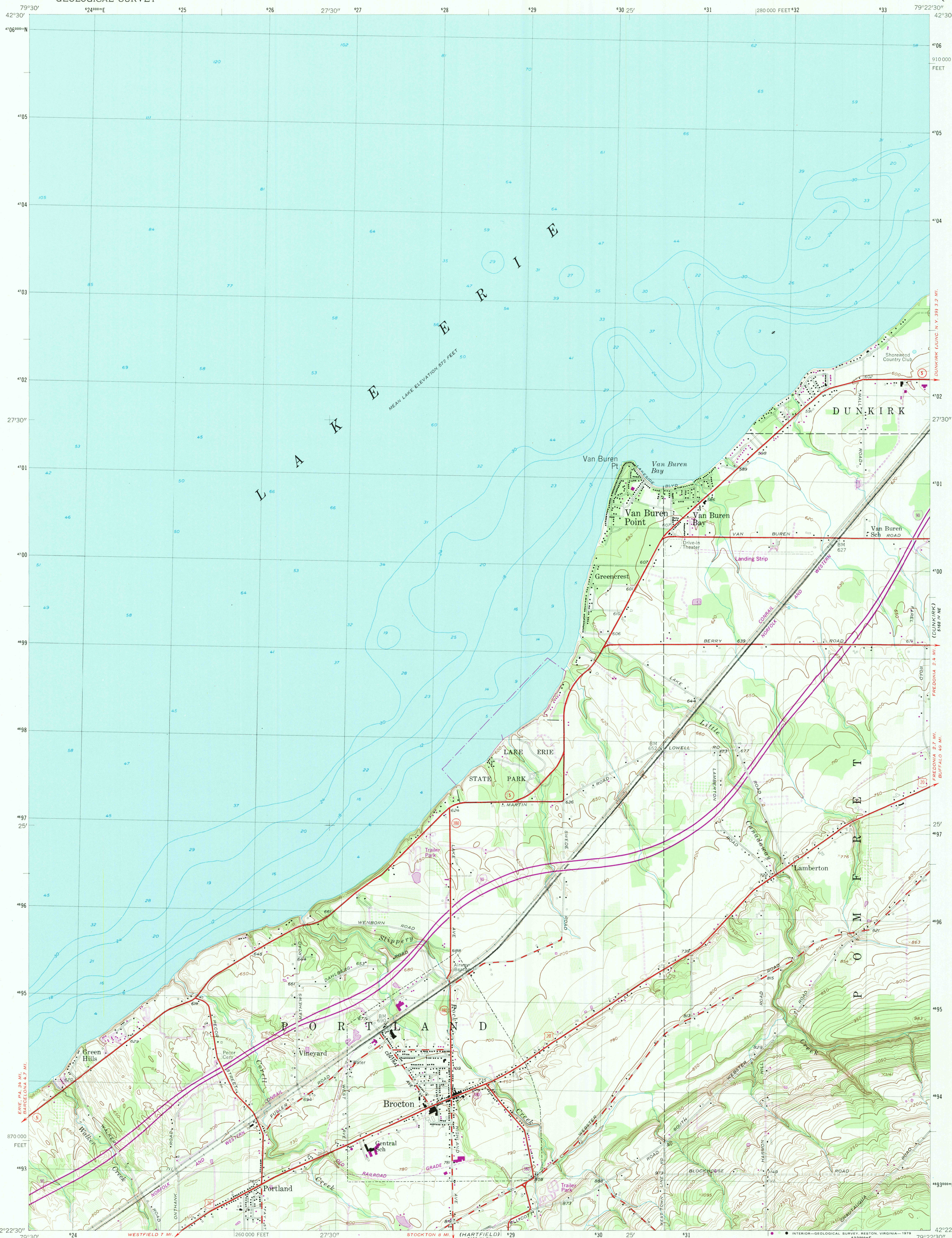


119 11 SE
(NORTH OF DUNKIRK)



Mapped, edited, and published by the Geological Survey
Control by USGS and USC&GS

Topography from aerial photographs by photogrammetric methods. Aerial photographs taken 1953. Field check 1954
Hydrography in Lake Erie compiled from U. S. Lake Survey chart 32 (1953)

Polyconic projection. 1927 North American datum
10,000-foot grid based on New York coordinate system, west zone
1000 meter Universal Transverse Mercator grid, zone 17

Unchecked elevations are shown in brown
There may be private inholdings within the boundaries of the National or State reservations shown on this map

Revisions shown in purple and woodland compiled from aerial photographs taken 1976 and other source data.
This information not field checked. Map edited 1979



CONTOUR INTERVAL 10 FEET
NATIONAL GEODETIC VERTICAL DATUM OF 1929
DEPTH CURVES AND SOUNDINGS IN FEET-DATUM IS LOW WATER 570 FEET

THIS MAP COMPLIES WITH NATIONAL MAP ACCURACY STANDARDS
FOR SALE BY U.S. GEOLOGICAL SURVEY, RESTON VIRGINIA 22092
A FOLDER DESCRIBING TOPOGRAPHIC MAPS AND SYMBOLS IS AVAILABLE ON REQUEST

ROAD CLASSIFICATION
Heavy-duty ——— Light-duty ———
Medium-duty ——— Unimproved dirt ———
U. S. Route ——— State Route ———
Interstate Route ———



BROCTON, N. Y.

N4222.5—W7922.5/7.5

1954

PHOTOREVISED 1979
AMS 5168 IV NW-SERIES 821

119 11 SE
(NORTH OF DUNKIRK)

(CASSADAGA)

119 11 SE
(NORTH OF DUNKIRK)