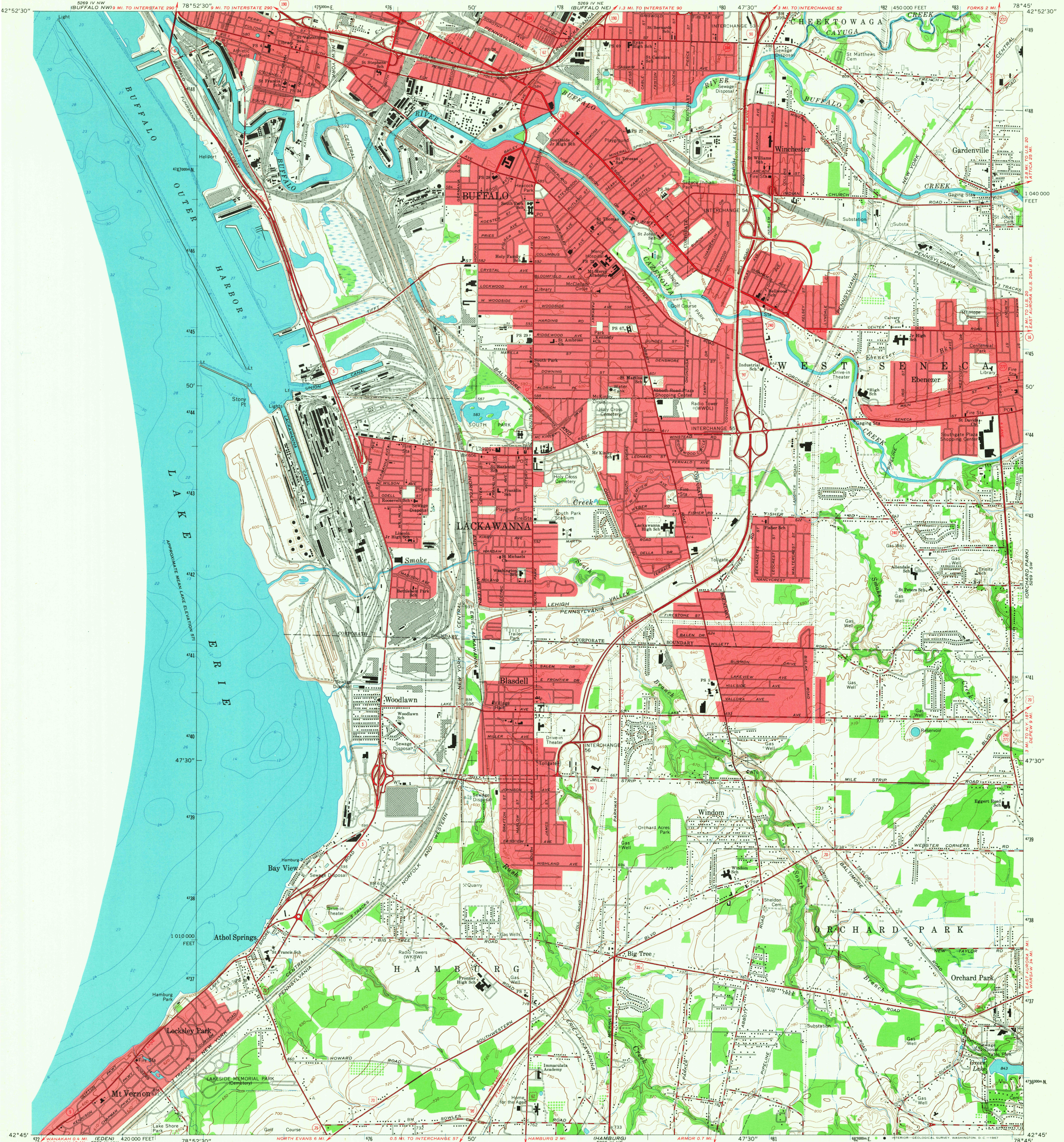
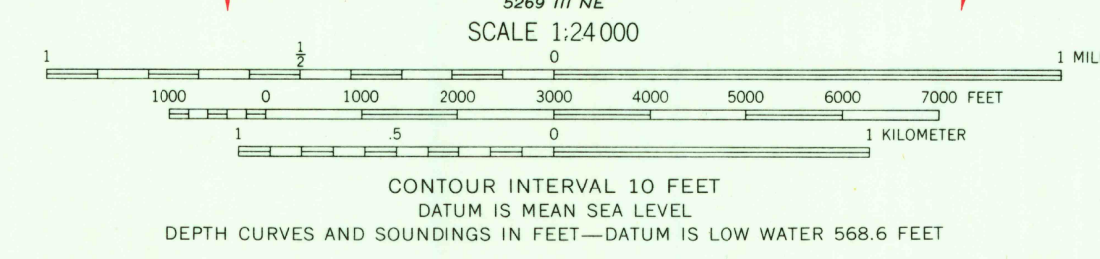
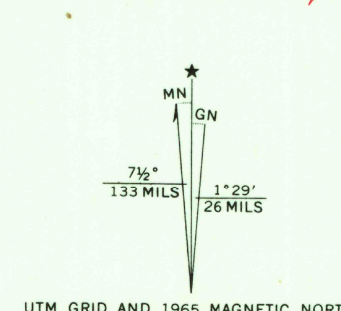


UNITED STATES
DEPARTMENT OF THE INTERIOR
GEOLOGICAL SURVEY

BUFFALO SE QUADRANGLE
NEW YORK-ERIE CO.
7.5 MINUTE SERIES (TOPOGRAPHIC)
SE/4 BUFFALO 15' QUADRANGLE



Mapped, edited, and published by the Geological Survey
in cooperation with New York Department of Public Works
Control by USGS, USCGS, USCE, and U. S. Lake Survey
Planimetry compiled by U. S. Corps of Engineers
from aerial photographs taken 1942. Topography by
planimetric surveys 1945. Revised 1965
Selected hydrographic data compiled from U.S. Lake Survey Charts
31 and 314 (1965). This information is not intended
for navigational purposes
Polyconic projection. 1927 North American datum
10,000-foot grid based on New York coordinate system, west zone
1000-meter Universal Transverse Mercator grid ticks,
zone 17, shown in blue
Fine red dashed lines indicate selected fence and field lines where
generally visible on aerial photographs. This information is unchecked
Red tint indicates areas in which only landmark buildings are shown



THIS MAP COMPLIES WITH NATIONAL MAP ACCURACY STANDARDS
FOR SALE BY U. S. GEOLOGICAL SURVEY, WASHINGTON, D. C. 20242
A FOLDER DESCRIBING TOPOGRAPHIC MAPS AND SYMBOLS IS AVAILABLE ON REQUEST

USGS
Historical File
Topographic Division
U.S.G.S.
FILE COPY
TOPOGRAPHIC DIVISION

ROAD CLASSIFICATION
Heavy-duty ——— Light-duty ———
Medium-duty ——— Unimproved dirt ———
Interstate Route — U. S. Route — State Route —
BUFFALO SE, N. Y.
SE/4 BUFFALO 15' QUADRANGLE
N4245-W7845/7.5
1965
AMS 5269 IV SE-SERIES W821

4345
FEB 9 1968