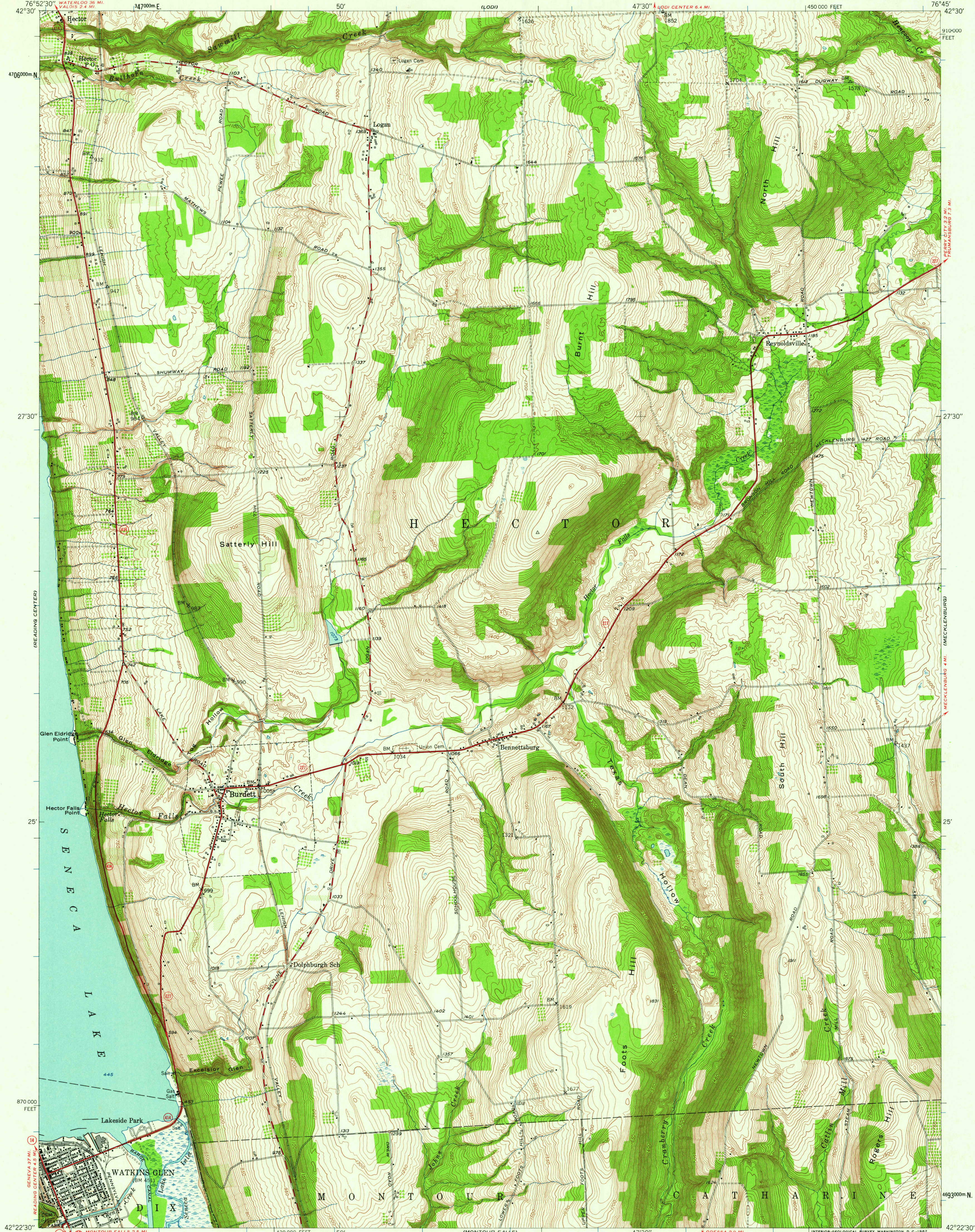


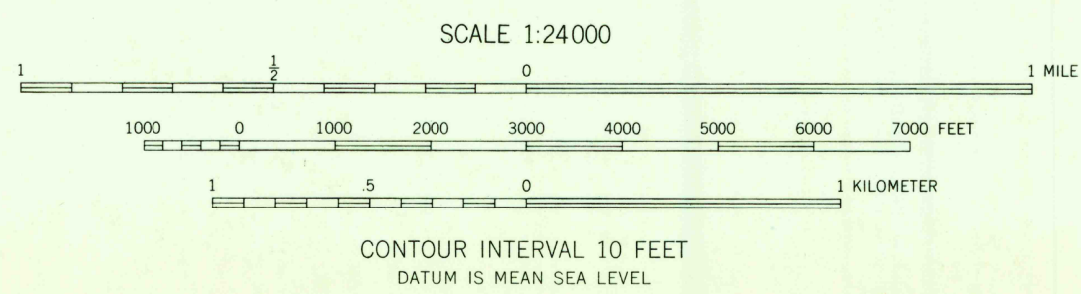
UNITED STATES  
DEPARTMENT OF THE INTERIOR  
GEOLOGICAL SURVEY

BURDETT QUADRANGLE  
NEW YORK-SCHUYLER CO.  
7.5 MINUTE SERIES (TOPOGRAPHIC  
NE/4 WATKINS GLEN 15' QUADRANGLE

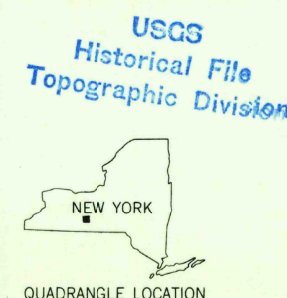


Mapped, edited, and published by the Geological Survey  
Control by USGS and USC&GS  
Topography from aerial photographs by multiplex methods  
Aerial photographs taken 1944. Field check 1950  
Polyconic projection. 1927 North American datum  
10,000-foot grid based on New York coordinate system,  
central zone  
1000 meter Universal Transverse Mercator grid ticks,  
zone 18, shown in blue

APPROXIMATE MEAN  
DECLINATION, 1950



THIS MAP COMPLIES WITH NATIONAL MAP ACCURACY STANDARDS  
FOR SALE BY U. S. GEOLOGICAL SURVEY, WASHINGTON 25, D. C.  
A FOLDER DESCRIBING TOPOGRAPHIC MAPS AND SYMBOLS IS AVAILABLE ON REQUEST



ROAD CLASSIFICATION  
Heavy-duty ——— Light-duty ———  
Medium-duty ——— Unimproved dirt ———  
State Route

BURDETT, N. Y.  
NE/4 WATKINS GLEN 15' QUADRANGLE  
N4222.5-W7645/7.5

1950

U.S.G.S.  
FILE COPY  
TOPOGRAPHIC DIVISION  
JUN 22 1962  
1550