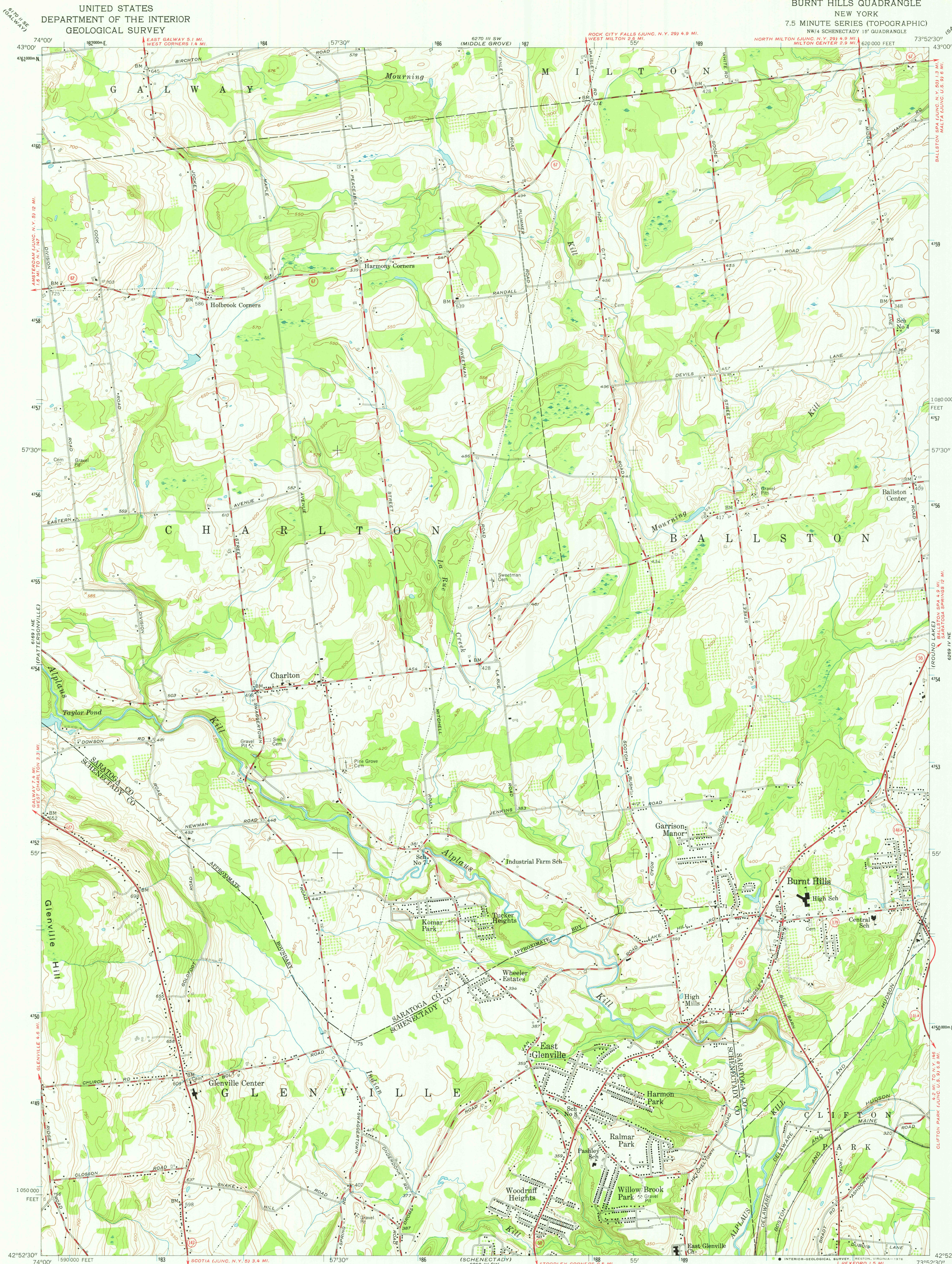
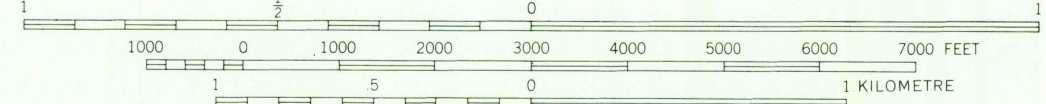
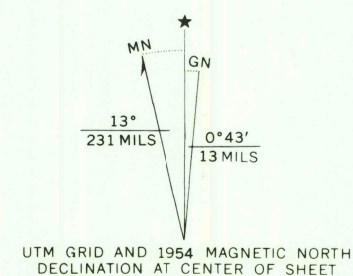


UNITED STATES
DEPARTMENT OF THE INTERIOR
GEOLOGICAL SURVEY

BURNT HILLS QUADRANGLE
NEW YORK
7.5 MINUTE SERIES (TOPOGRAPHIC)
NW/4 SCHENECTADY 15' QUADRANGLE



Mapped, edited, and published by the Geological Survey
Control by USGS and USC&GS
Topography from aerial photographs by stereophotogrammetric
methods. Aerial photographs taken 1952. Field check 1954
Polyconic projection. 1927 North American datum
10,000-foot grid based on New York coordinate system,
east zone
Unchecked elevations are shown in brown
1000-metre Universal Transverse Mercator grid ticks,
zone 18, shown in blue



CONTOUR INTERVAL 10 FEET
NATIONAL GEODETIC VERTICAL DATUM OF 1929
THIS MAP COMPLIES WITH NATIONAL MAP ACCURACY STANDARDS
FOR SALE BY U. S. GEOLOGICAL SURVEY, RESTON, VIRGINIA 22092
A FOLDER DESCRIBING TOPOGRAPHIC MAPS AND SYMBOLS IS AVAILABLE ON REQUEST



ROAD CLASSIFICATION
Heavy-duty ——— Light-duty ———
Medium-duty ——— Unimproved dirt ———
U. S. Route ——— State Route ———

BURNT HILLS, N. Y.
NW/4 SCHENECTADY 15' QUADRANGLE
N 4252.5° W 7352.5' 7.5
1954
USGS
Historical File
Topographic Division
AMS 6269 IV NW-SERIES V821

JUL 12 1976