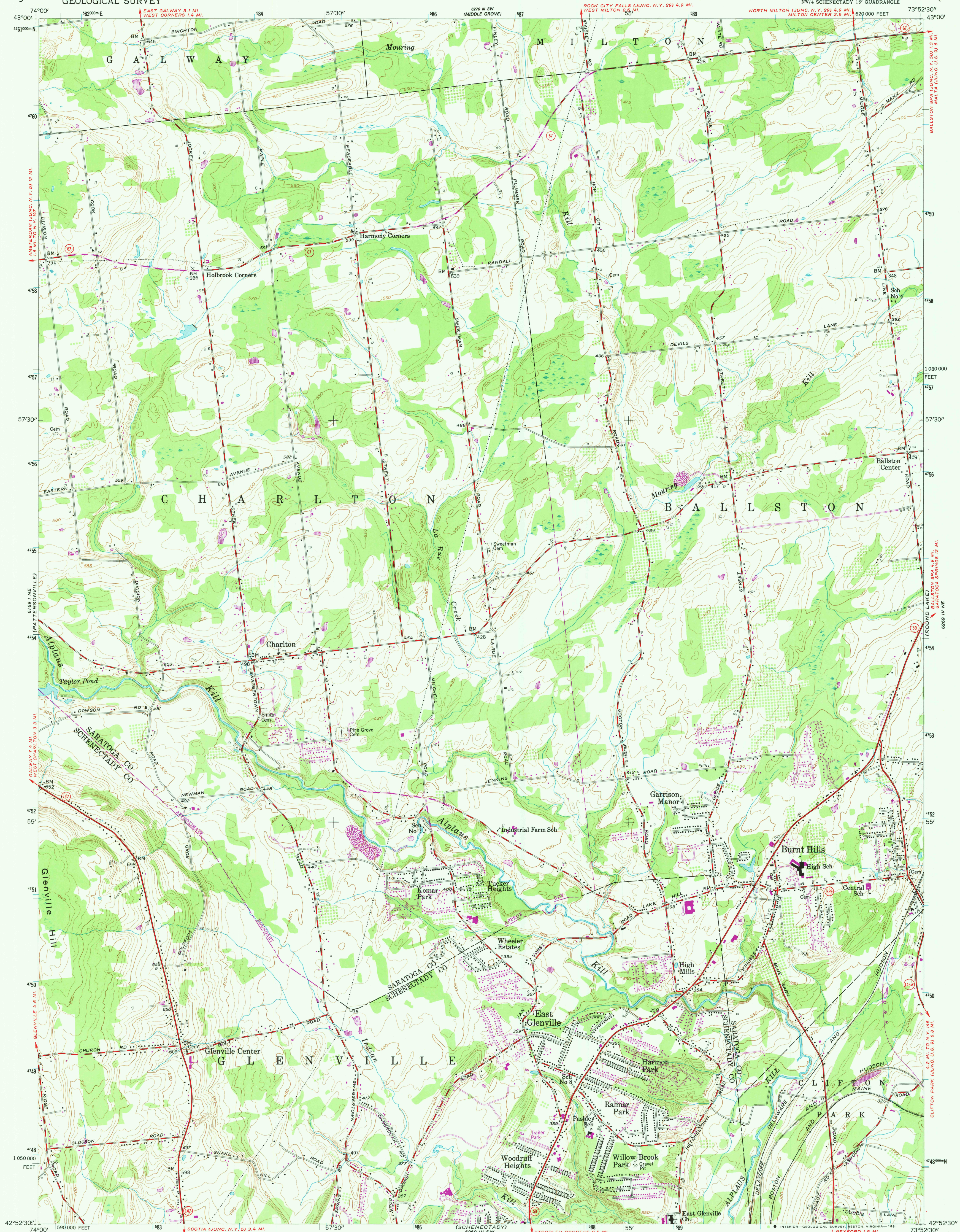


UNITED STATES
DEPARTMENT OF THE INTERIOR
GEOLOGICAL SURVEY

BURNT HILLS QUADRANGLE
NEW YORK
7.5 MINUTE SERIES (TOPOGRAPHIC)
NW 1/4 SCHENECTADY 15' QUADRANGLE



Mapped, edited, and published by the Geological Survey

Control by USGS and NOS/NOAA
Topography from aerial photographs by stereophotogrammetric methods. Aerial photographs taken 1952. Field check 1954

Polyconic projection
10,000-foot grid based on New York coordinate system, east zone

1000-meter Universal Transverse Mercator grid ticks, zone 18, shown in blue. 1927 North American Datum To place on the predicted North American Datum 1983 move the projection lines 4 meters south and 34 meters west as shown by dashed corner ticks

Revisions shown in purple compiled from aerial photographs taken 1978 and other source data. This information not field checked. Map edited 1980

