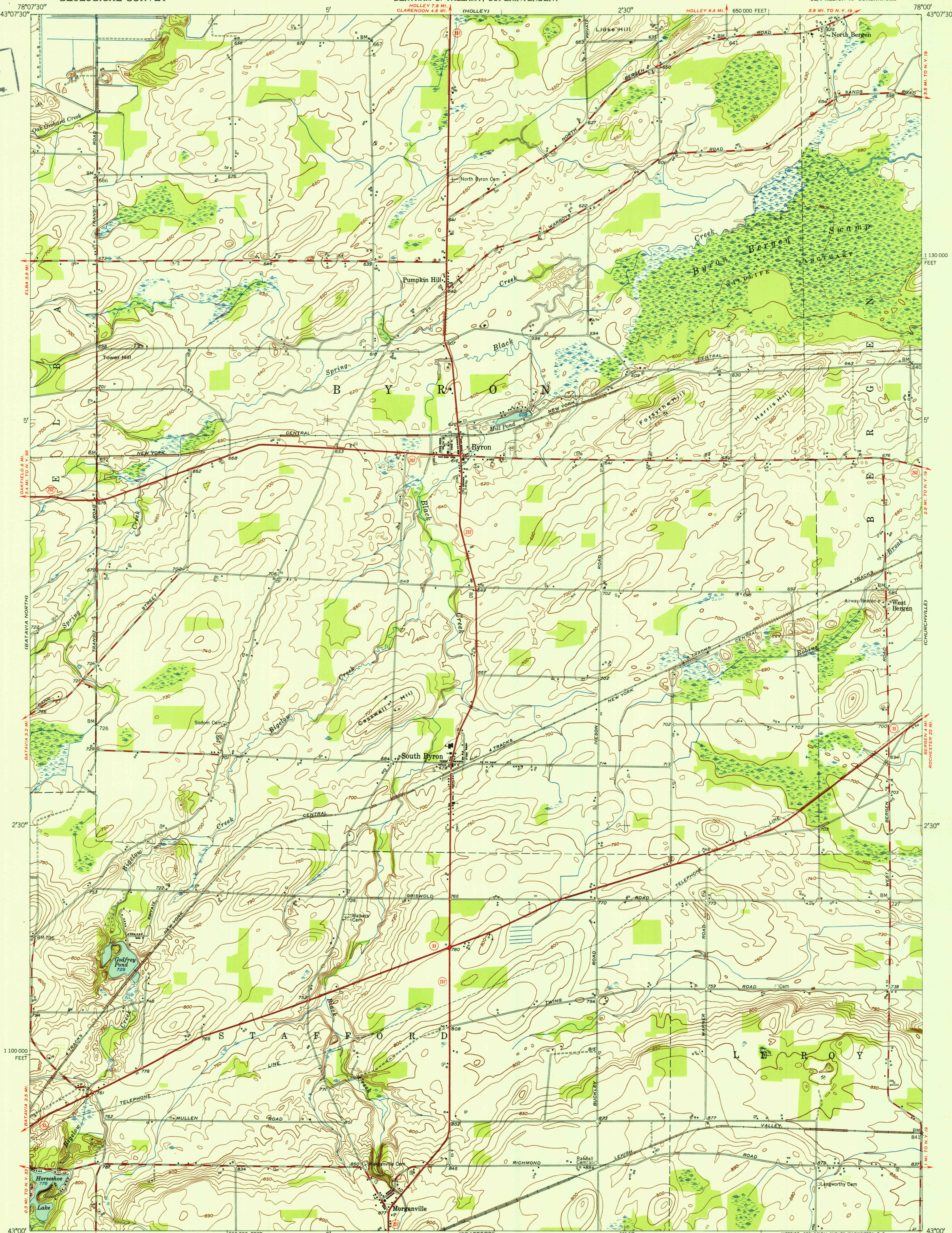


U. S. G. S.
FILE COPY
Inspection and Editing.

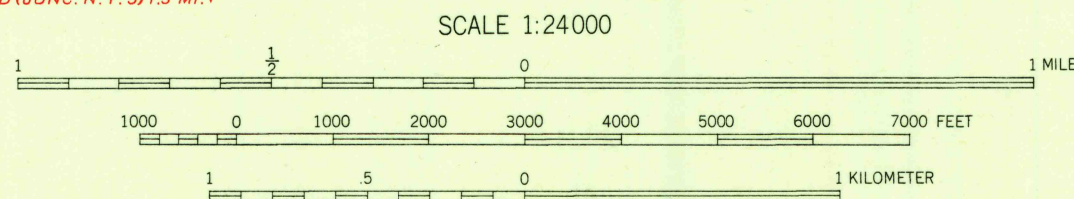


Mapped, edited, and published by the Geological Survey
Control by USGS and USC&GS

Culture and drainage in part compiled by Corps of Engineers,
Dept. of the Army, from aerial photographs taken 1942
Topography by plane-table methods 1950

Polyconic projection. 1927 North American datum
10,000-foot grid based on New York coordinate system,
west zone

TRUE NORTH
MAGNETIC NORTH
APPROXIMATE MEAN
DECLINATION, 1950



CONTOUR INTERVAL 10 FEET
DATUM IS MEAN SEA LEVEL

THIS MAP COMPLIES WITH NATIONAL MAP ACCURACY STANDARDS
FOR SALE BY U. S. GEOLOGICAL SURVEY, WASHINGTON 25, D. C.
A FOLDER DESCRIBING TOPOGRAPHIC MAPS AND SYMBOLS IS AVAILABLE ON REQUEST

USGS
Historical File
Topographic Division

ROAD CLASSIFICATION
Heavy-duty 4 LANE 16 LANE Light-duty
Medium-duty 4 LANE 16 LANE Unimproved dirt
U. S. Route State Route

BYRON, N. Y.
SE/4 ALBION 15' QUADRANGLE
N4300-W7800/7.5

EDITION OF 1952

U. S. G. S.
FILE COPY
Inspection and Editing.