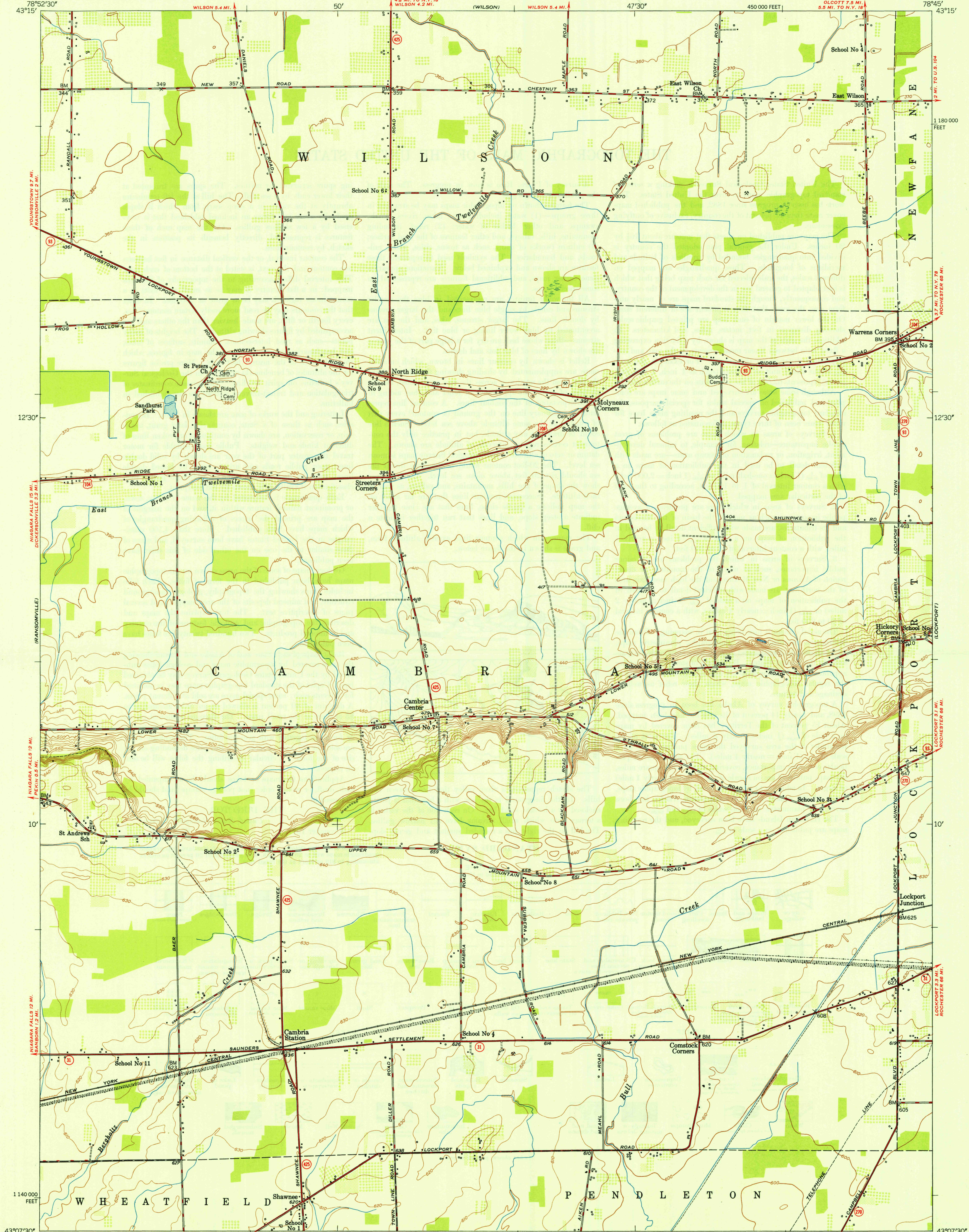


UNITED STATES
DEPARTMENT OF THE INTERIOR
GEOLOGICAL SURVEY

STATE OF NEW YORK
DEPARTMENT OF PUBLIC WORKS
BERTRAM D. TALLAMY, SUPERINTENDENT

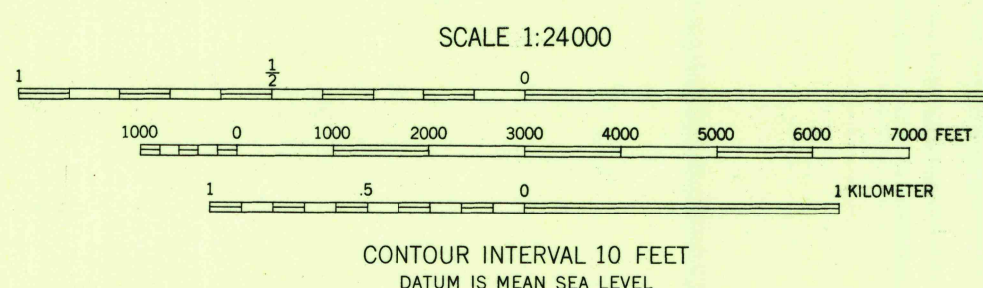
U.S.G.S.
FILE COPY
Inspection and Editing.

CAMBRIA QUADRANGLE
NEW YORK-NIAGARA CO.
7.5 MINUTE SERIES (TOPOGRAPHIC)
NE/4 TONAWANDA 15' QUADRANGLE
OCCOTT 7.5 MI.
5.5 MI. TO N.Y. 18



Mapped, edited, and published by the Geological Survey
Control by USGS and USED
Culture and drainage in part compiled by Corps of Engineers,
Dept. of the Army, from aerial photographs taken 1942
Topography by plane-table methods 1948
Polyconic projection, 1927 North American datum
10,000-foot grid based on New York coordinate system,
west zone

APPROXIMATE MEAN
DECLINATION, 1948



THIS MAP COMPLIES WITH NATIONAL MAP ACCURACY STANDARDS
FOR SALE BY U. S. GEOLOGICAL SURVEY, WASHINGTON 25, D. C.

USGS
Historical File
Topographic Division

ROAD CLASSIFICATION
HARD-SURFACE ALL WEATHER ROADS DRY WEATHER ROADS
Heavy-duty 4 LANE 18 LANE Improved dirt
Medium-duty 4 LANE 18 LANE Unimproved dirt
Loose-surface, graded, or narrow hard-surface
U. S. Route State Route

WOODLAND
Woods-Brushwood
Orchard
Vineyard

CAMBRIA, N. Y.
NE/4 TONAWANDA 15' QUADRANGLE
N43075-W78457.5

EDITION OF 1949

NOV 2 21949