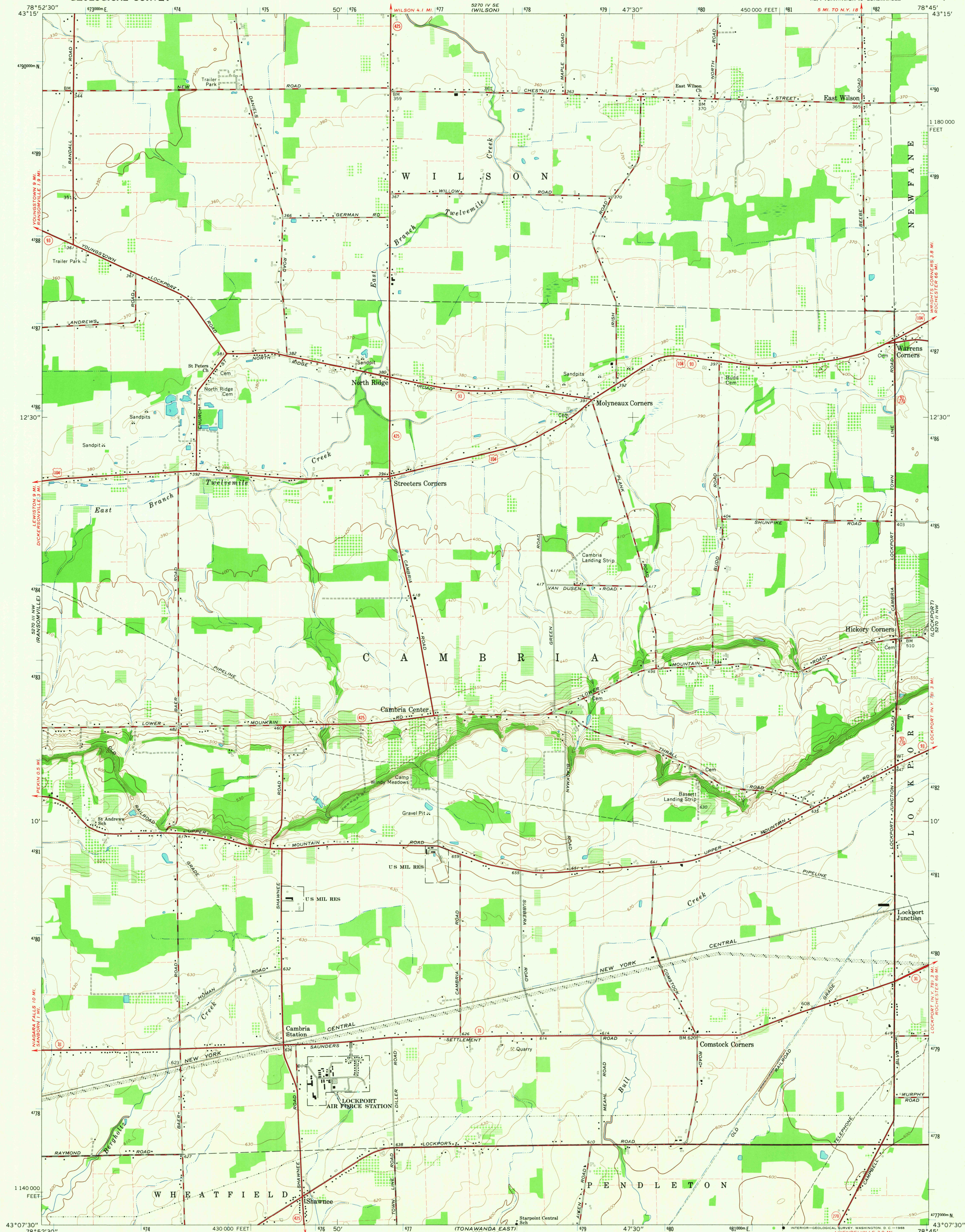
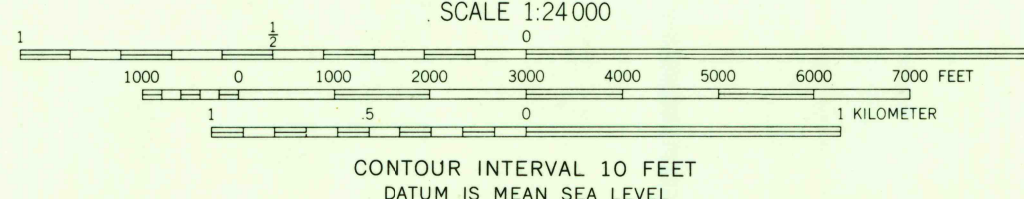


UNITED STATES  
DEPARTMENT OF THE INTERIOR  
GEOLOGICAL SURVEY

CAMBRIA QUADRANGLE  
NEW YORK—NIAGARA CO.  
7.5 MINUTE SERIES (TOPOGRAPHIC)  
NE/4 TONAWANDA 15' QUADRANGLE



Mapped, edited, and published by the Geological Survey  
in cooperation with New York Department of Transportation  
Control by USGS, USC&GS, and USCE  
Planimetry compiled by U. S. Corps of Engineers from  
aerial photographs taken 1942. Topography by  
planimetric surveys 1948. Revised 1965  
Polyconic projection. 1927 North American datum  
10,000-foot grid based on New York coordinate system, west zone  
1000-meter Universal Transverse Mercator grid ticks,  
zone 17, shown in blue  
Fine red dashed lines indicate selected fence and field lines where  
generally visible on aerial photographs. This information is unchecked



USGS  
Historical File  
Topographic Division

ROAD CLASSIFICATION  
Heavy-duty ——— Light-duty ———  
Medium-duty ——— Unimproved dirt ———  
U.S. Route ——— State Route ———



U.S.G.S.  
FILE COPY  
TOPOGRAPHIC DIVISION

CAMBRIA, N. Y.  
NE/4 TONAWANDA 15' QUADRANGLE  
N4307.5—W7845/7.5  
1965  
AMS 5270 III NE—SERIES V821

3485  
JUN 25 1968