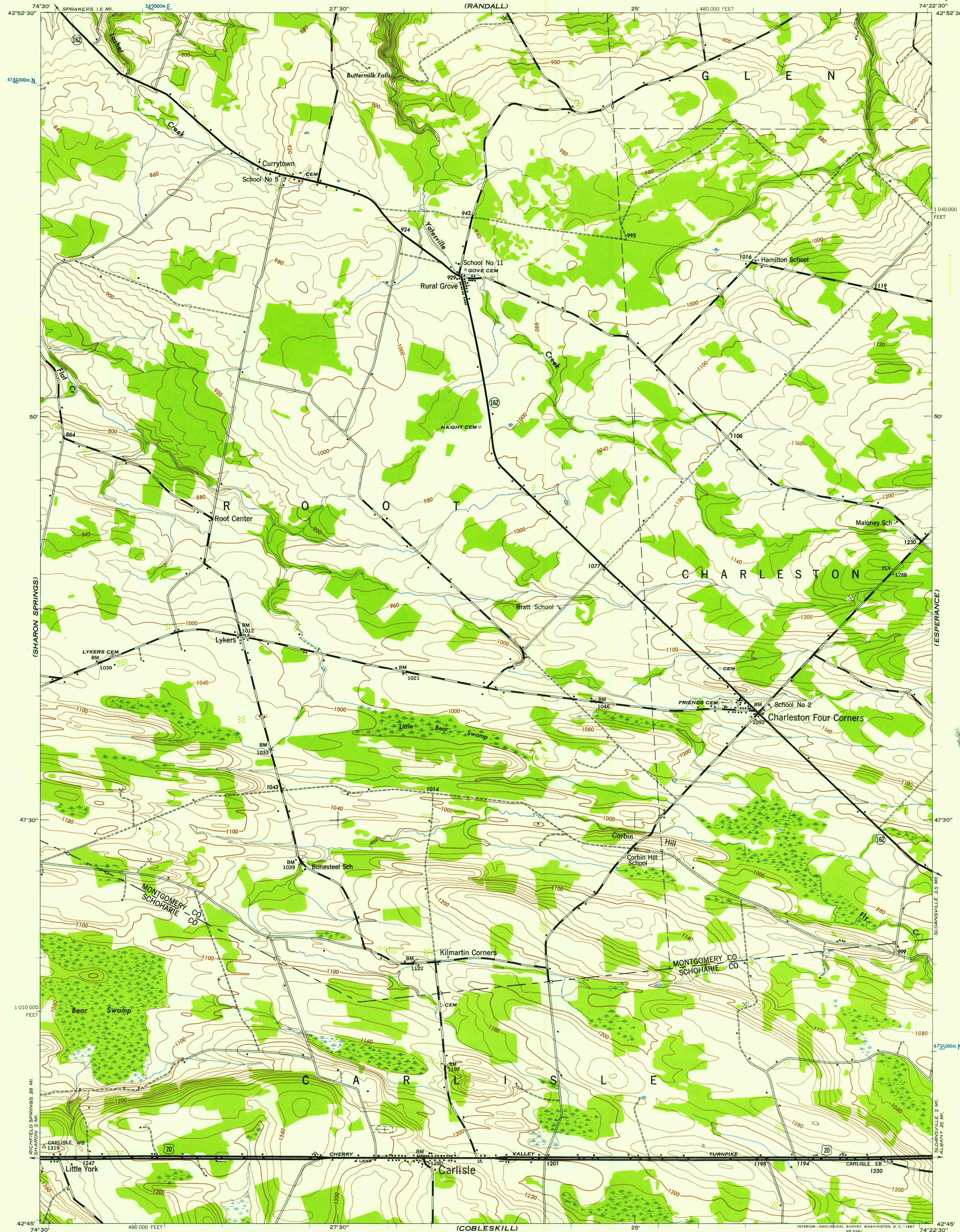


NEW YORK

WAR DEPARTMENT  
CORPS OF ENGINEERS, U.S. ARMY

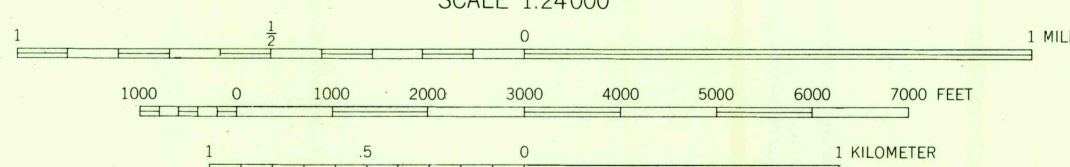
CARLISLE QUADRANGLE  
7½-MINUTE SERIES

(TRIBES HILL)



Map by Tennessee Valley Authority under direction of the  
Chief of Engineers, U. S. Army, 1943.  
Control by USCGS and TVA.  
Topography by U. S. Geological Survey and Tennessee Valley Authority  
by Stereophotogrammetric methods (Multiplex).  
Field completion surveys by TVA.  
Wide-angle photography by TVA, 1942.  
Polyconic projection. 1927 North American datum

ROAD CLASSIFICATION  
1943  
Dependable hard-surface,  
heavy-duty road. ——— U. S. Route (20)  
Secondary, hard-surface,  
all-weather road. ——— State Route (7)  
Dirt road. ———  
More than two lanes indicated by note along road with tick at point of change.  
This map complies with the national standard map accuracy requirements.



10,000-FOOT GRID TICKS NEW YORK PLANE COORDINATE SYSTEM EAST ZONE SHOWN IN BLACK  
1000-METER GRID TICKS, UNIVERSAL TRANSVERSE MERCATOR SYSTEM, ZONE 18, SHOWN IN BLUE  
REPRINTED FROM MILITARY EDITION FOR CIVIL USE  
FOR SALE BY U. S. GEOLOGICAL SURVEY, WASHINGTON 25, D. C.  
A FOLDER DESCRIBING TOPOGRAPHIC MAPS AND SYMBOLS IS AVAILABLE ON REQUEST

USGS  
Historical File  
Topographic Division

U.S.G.S.  
FILE COPY  
TOPOGRAPHIC DIVISION

APPROXIMATE MEAN  
DECLINATION, 1943

CARLISLE, N.Y.  
N4245-W7422.5/7.5  
1943

AUG - 5 1957

1145