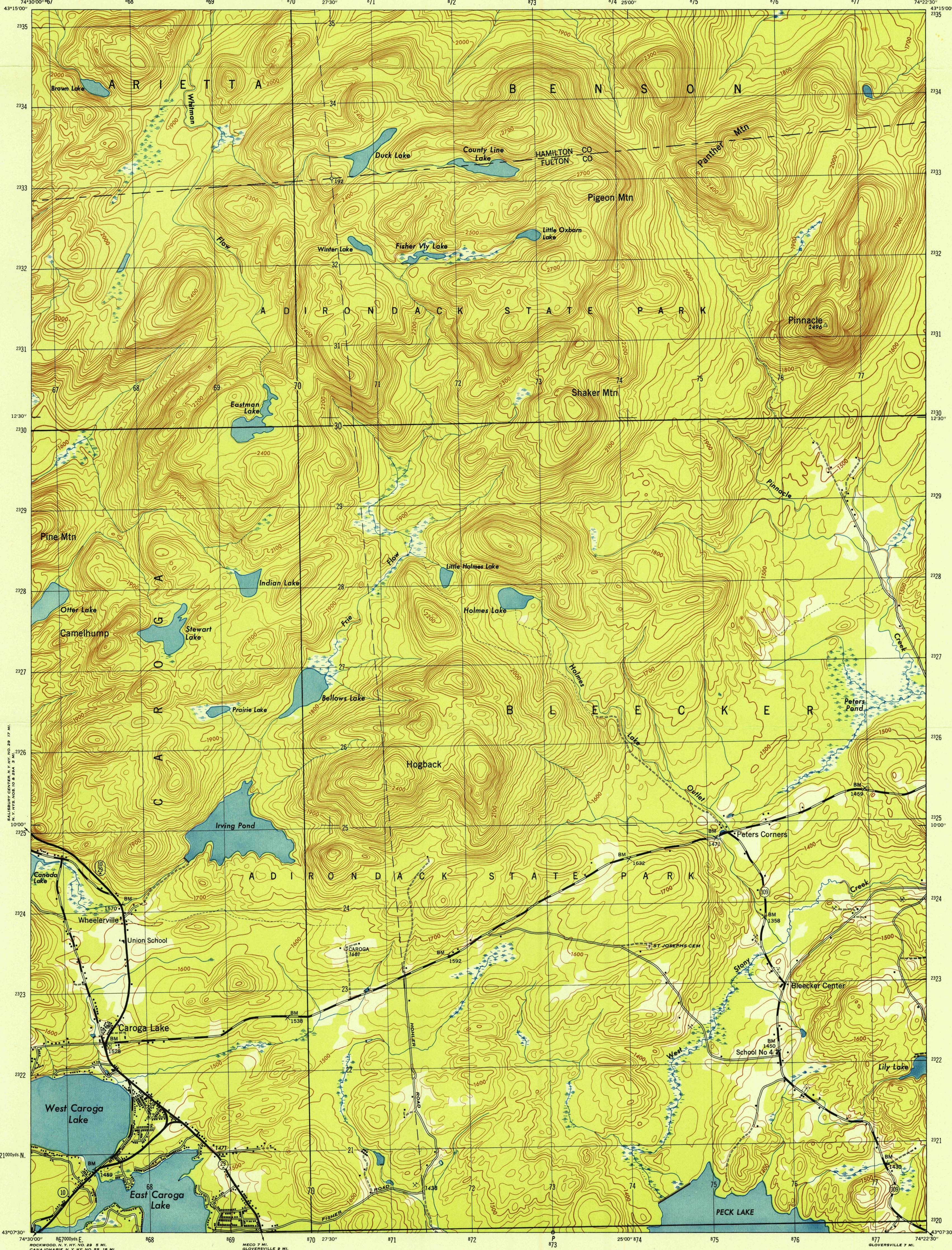


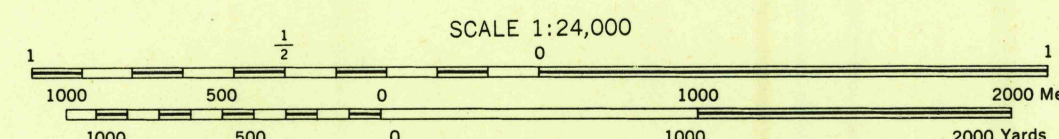
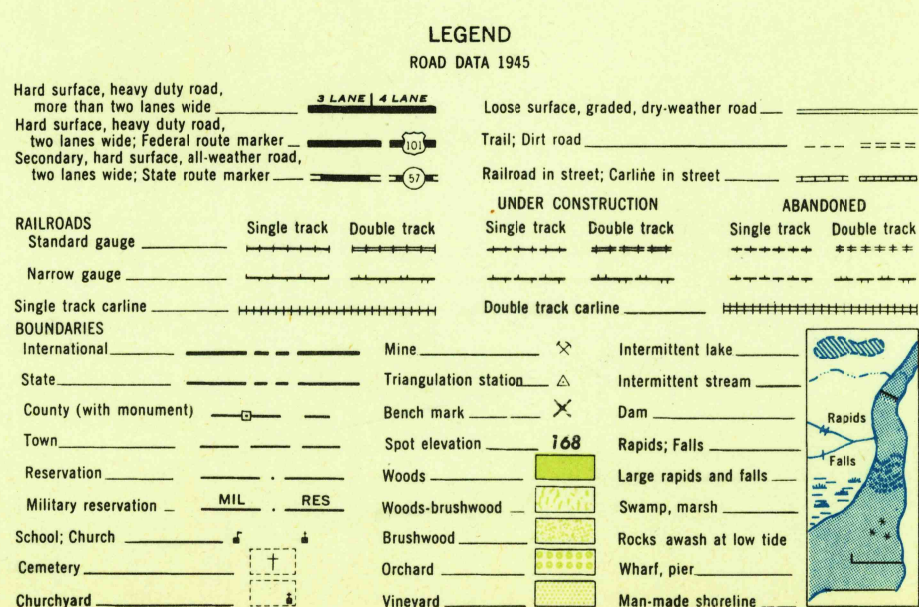
74°30'00" 67 68 69 70 71 72 73 74 25°00' 75 76 77

15° 14° 13° 12° 11° 10°

0°

A.M.S. V821
First Edition (AMS 1), 1945

Prepared under the direction of the Chief of Engineers by the Army Map Service (TVA), U. S. Army, Washington, D. C. Compiled in 1945 by USGS and TVA from wide angle aerial photographs by stereophotogrammetric methods. Aerial photography for TVA, 1943 and 1944. Horizontal and vertical control by USCGS, USGS, and TVA. Map field checked, 1945. This map complies with the national standard map accuracy requirements.



CONTOUR INTERVAL 20 FEET

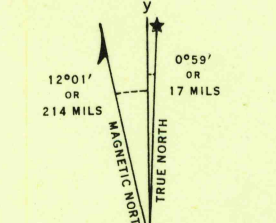
DATUM IS MEAN SEA LEVEL

POLYCONIC PROJECTION

1927 NORTH AMERICAN DATUM

ONE THOUSAND YARD U. S. POLYCONIC GRID, ZONE A

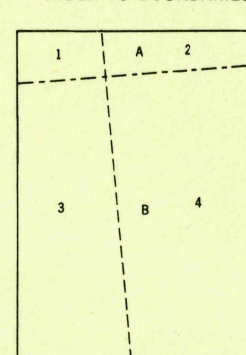
THE LAST THREE DIGITS OF THE GRID NUMBERS ARE OMITTED



REPRINTED FROM MILITARY EDITION FOR CIVIL USE
PENDING REVISION FOR STANDARD ISSUE
SOLD AND DISTRIBUTED BY U. S. GEOLOGICAL SURVEY, WASHINGTON 25, D. C.

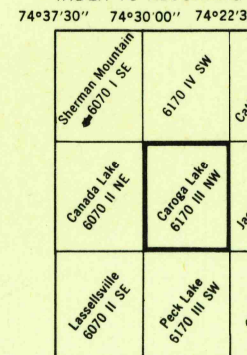
APPROXIMATE MEAN DECLINATION 1946
FOR CENTER OF SHEET
NO ANNUAL MAGNETIC CHANGE
Use diagram only to obtain numerical values. To determine magnetic north line, connect the pivot point "P" on the south edge of the map with the value of the angle between GRID NORTH and MAGNETIC NORTH, as plotted on the degree scale of the north edge of the map.

INDEX TO BOUNDARIES



A. Hamilton County
B. Fulton County
C. Caroga County
D. Schoharie County

INDEX TO ADJOINING SHEETS



Sheet 6170 III NW falls within NK 16-2, AMS 1901, 1:250,000

CAROGA LAKE, NEW YORK
N4307.5-W7422.5/7.5

JAN 3 1949