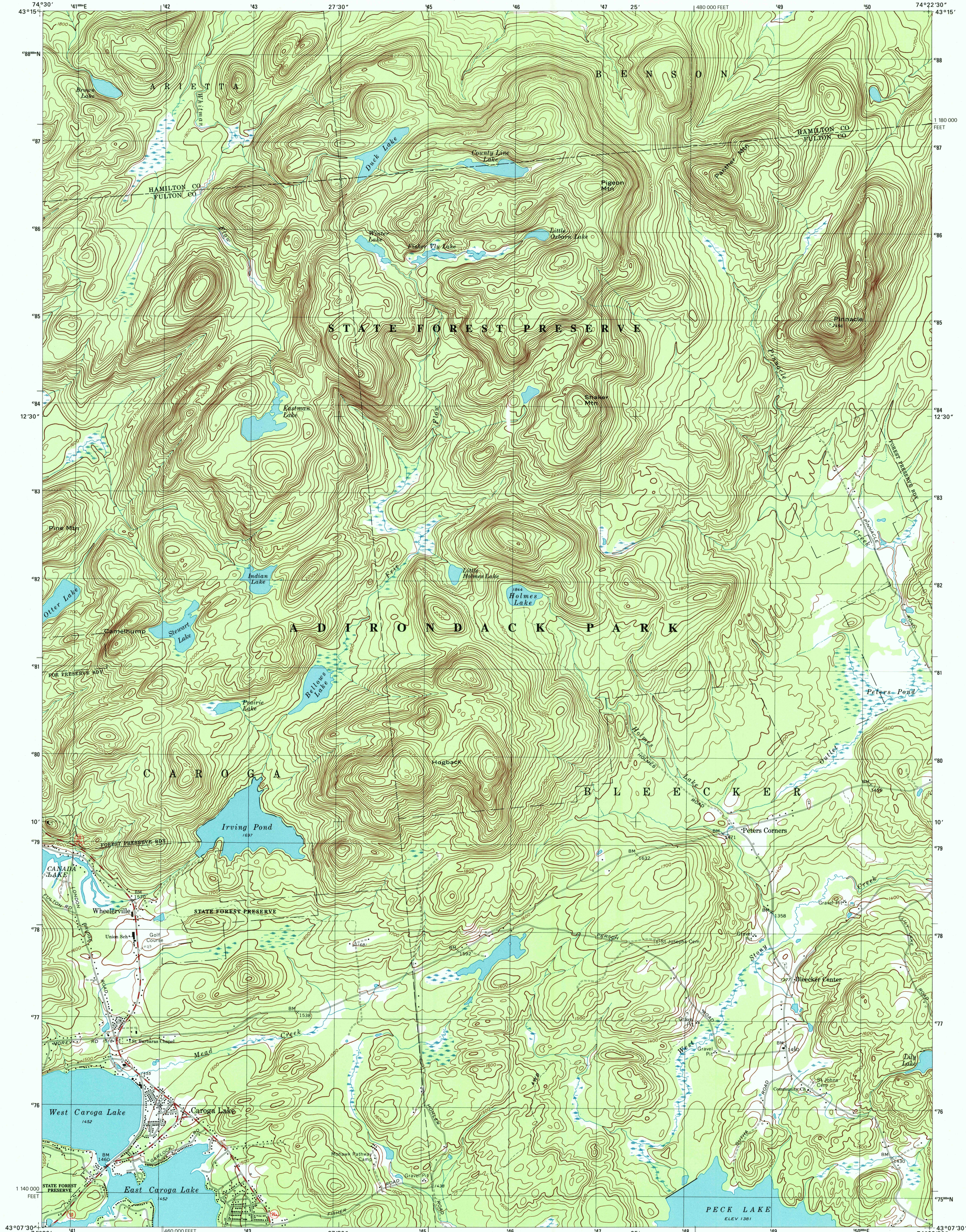




U.S. DEPARTMENT OF THE INTERIOR  
U.S. GEOLOGICAL SURVEY

CAROGA LAKE QUADRANGLE  
NEW YORK  
7.5-MINUTE SERIES (TOPOGRAPHIC)



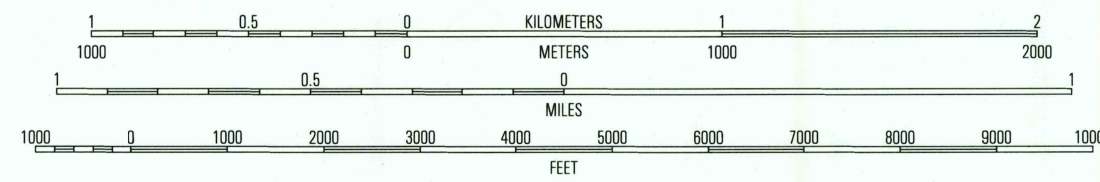
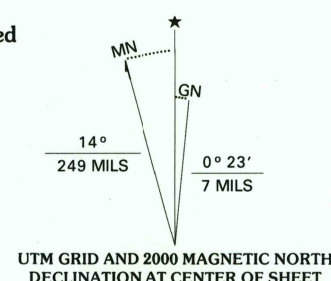
Produced by the United States Geological Survey

Derived from imagery taken 1969 and other sources. Photoinspected using imagery taken 1997; no major culture or drainage changes observed. Survey control current as of 1970. Boundaries revised 2000.

North American Datum of 1927 (NAD 27). Projection and 10 000-foot ticks: New York coordinate system, east zone (transverse Mercator). 1000-meter Universal Transverse Mercator grid, zone 18.

North American Datum of 1983 (NAD 83) is shown by dashed corner ticks. The values of the shift between NAD 27 and NAD 83 for 7.5-minute intersections are obtainable from National Geodetic Survey NADCON software.

There may be private inholdings within the boundaries of the National or State reservations shown on this map.



CONTOUR INTERVAL 20 FEET  
NATIONAL GEODETIC VERTICAL DATUM OF 1929  
TO CONVERT FROM FEET TO METERS, MULTIPLY BY 0.3048

THIS MAP COMPLIES WITH NATIONAL MAP ACCURACY STANDARDS  
FOR SALE BY U.S. GEOLOGICAL SURVEY, P.O. BOX 25286, DENVER, COLORADO 80225  
A FOLDER DESCRIBING TOPOGRAPHIC MAPS AND SYMBOLS IS AVAILABLE ON REQUEST



1	2	3
4	5	6
7	8	

ADJOINING 7.5' QUADRANGLE NAMES

CAROGA LAKE, NY  
1997

NIMA 6170 III NW-SERIES V821

RECEIVED  
SEP 30 2000  
USGS NAD  
HISTORICAL MAP ARCHIVES

