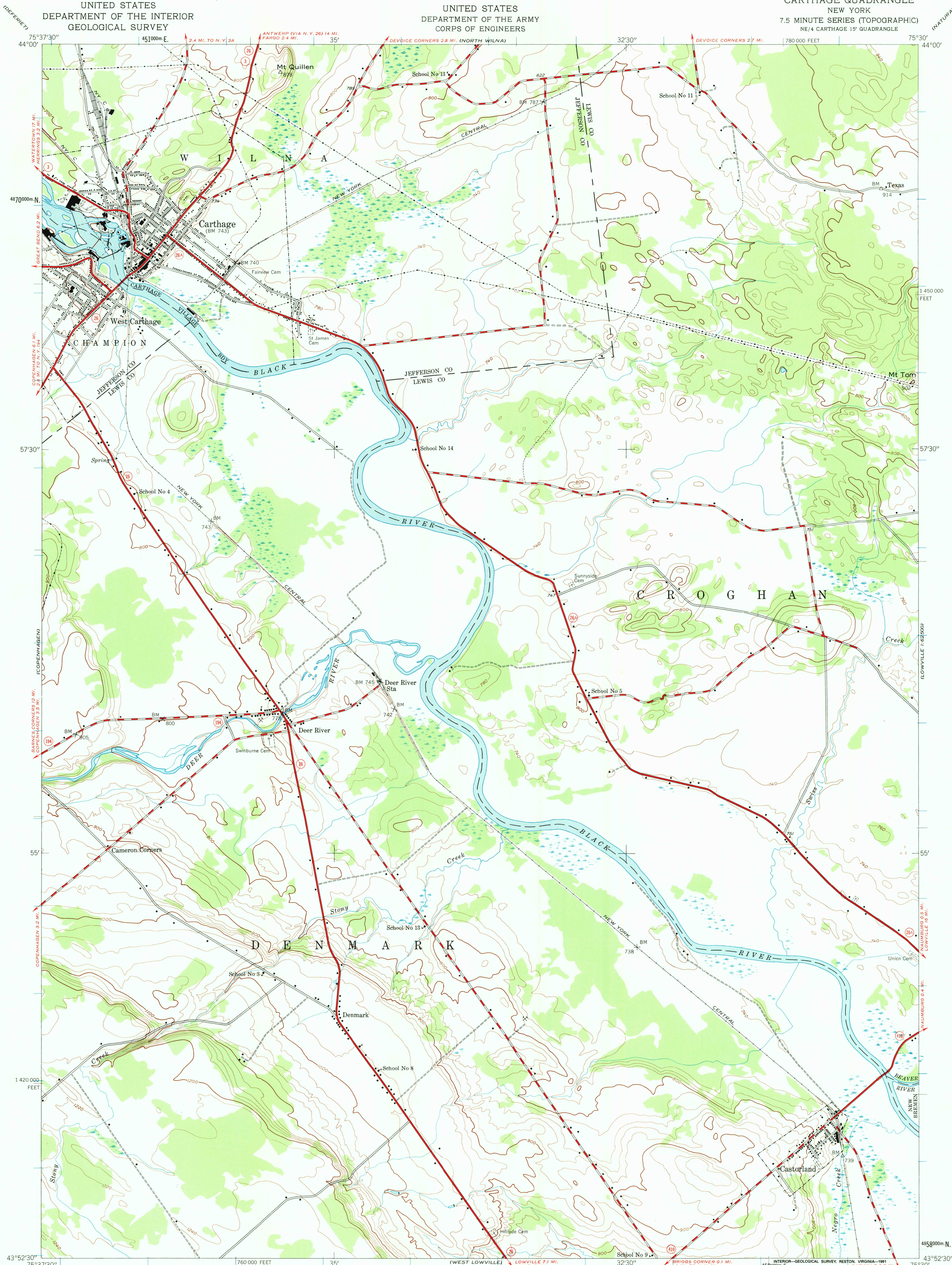


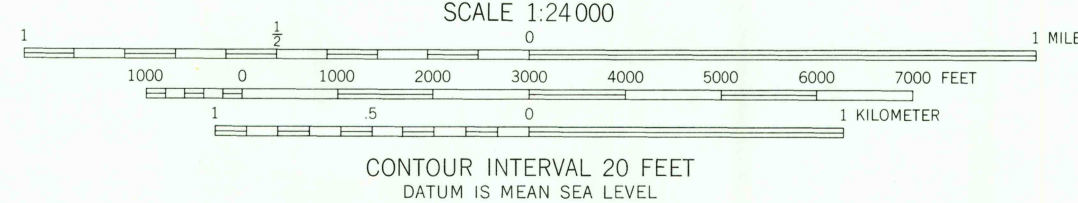
(DEFERRED)



Mapped by the Army Map Service  
Published for civil use by the Geological Survey  
Control by USGS, USC&GS, and TVA  
Topography from aerial photographs by photogrammetric methods  
Aerial photographs taken 1942. Field check 1943  
Polyconic projection. 1927 North American datum  
10,000-foot grid based on New York coordinate system, central zone  
1000-meter Universal Transverse Mercator grid ticks,  
zone 18, shown in blue

Map photoinspected 1980  
No major culture or drainage changes observed

12 1/2°  
MAGNETIC NORTH  
TRUE NORTH  
APPROXIMATE MEAN  
DECLINATION, 1943



THIS MAP COMPLIES WITH NATIONAL MAP ACCURACY STANDARDS  
FOR SALE BY U.S. GEOLOGICAL SURVEY  
DENVER, COLORADO 80225, OR RESTON, VIRGINIA 22092  
A FOLDER DESCRIBING TOPOGRAPHIC MAPS AND SYMBOLS IS AVAILABLE ON REQUEST



ROAD CLASSIFICATION  
Heavy-duty ——— Light-duty ———  
Medium-duty ——— Unimproved dirt ———  
State Route ———

CARTHAGE, N. Y.  
NE/4 CARTHAGE 15' QUADRANGLE  
N4352.5—W7530.7.5

1943  
PHOTOINSPECTED 1980

USGS NMD HISTORICAL MAP

MAY 30 1991

REC'D FILE COPY