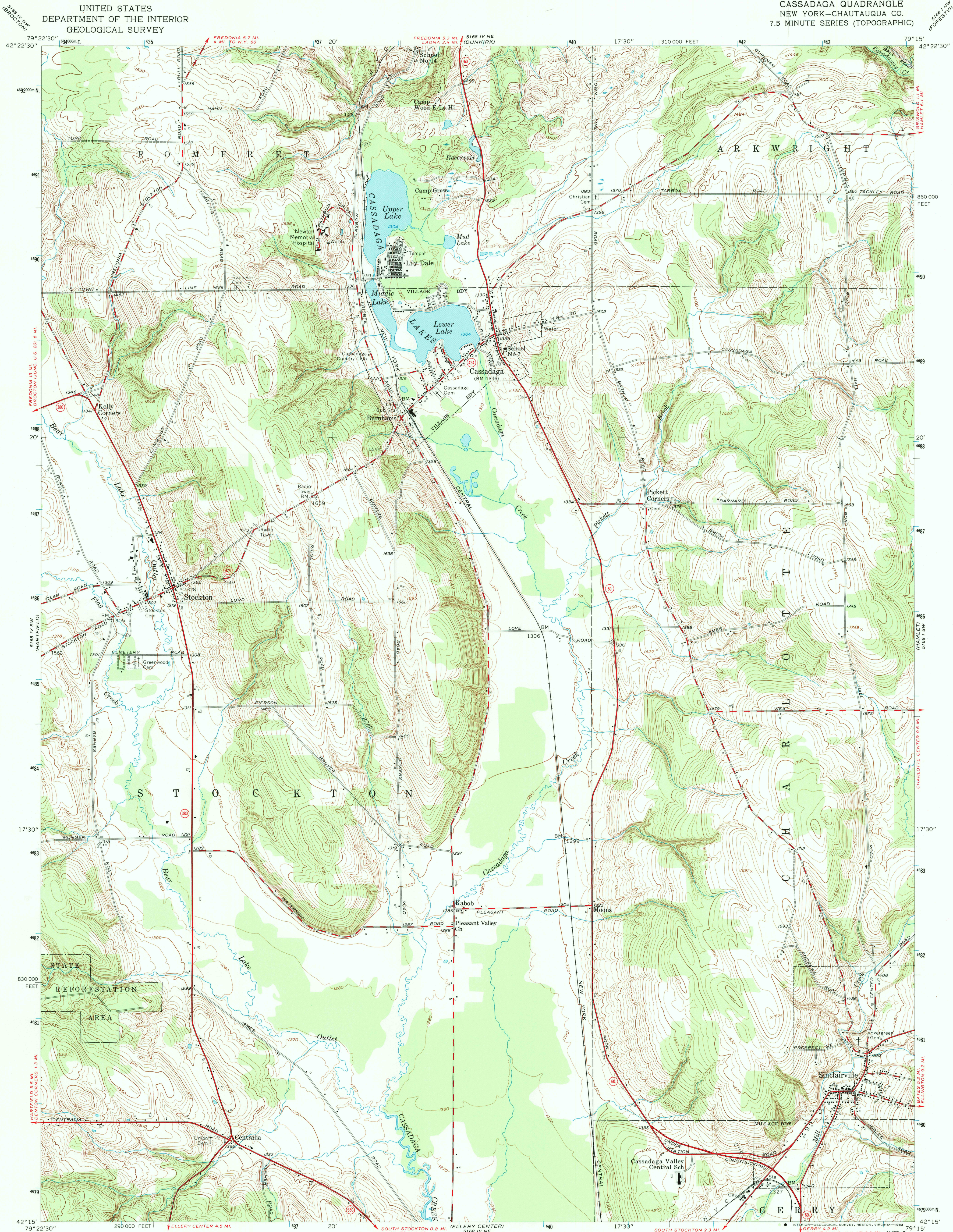
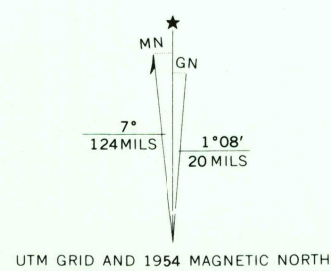


UNITED STATES
DEPARTMENT OF THE INTERIOR
GEOLOGICAL SURVEY

CASSADAGA QUADRANGLE
NEW YORK—CHAUTAUQUA CO.
7.5 MINUTE SERIES (TOPOGRAPHIC)



Mapped, edited, and published by the Geological Survey
Control by USGS and USC&GS
Topography from aerial photographs by photogrammetric methods. Aerial photographs taken 1953. Field check 1954
Polyconic projection, 1927 North American datum
10,000-foot grid based on New York coordinate system, west zone
Unchecked elevations are shown in brown
1000-meter Universal Transverse Mercator grid ticks, zone 17, shown in blue
Map photoinspected 1976
No major culture or drainage changes observed



CONTOUR INTERVAL 10 FEET
DATUM IS MEAN SEA LEVEL
THIS MAP COMPLIES WITH NATIONAL MAP ACCURACY STANDARDS
FOR SALE BY U.S. GEOLOGICAL SURVEY, RESTON, VIRGINIA 22092
A FOLDER DESCRIBING TOPOGRAPHIC MAPS AND SYMBOLS IS AVAILABLE ON REQUEST



ROAD CLASSIFICATION
Heavy-duty ——— Light-duty ———
Medium-duty ——— Unimproved dirt ———
State Route

CASSADAGA, N. Y.
N4215—W7915/7.5
PHOTOINSPECTED 1976
1954

AMS 5168 IV SE—SERIES V821

JUL 13 1988
RETURN TO:
USGS AND HISTORICAL MAP ARCHIVES