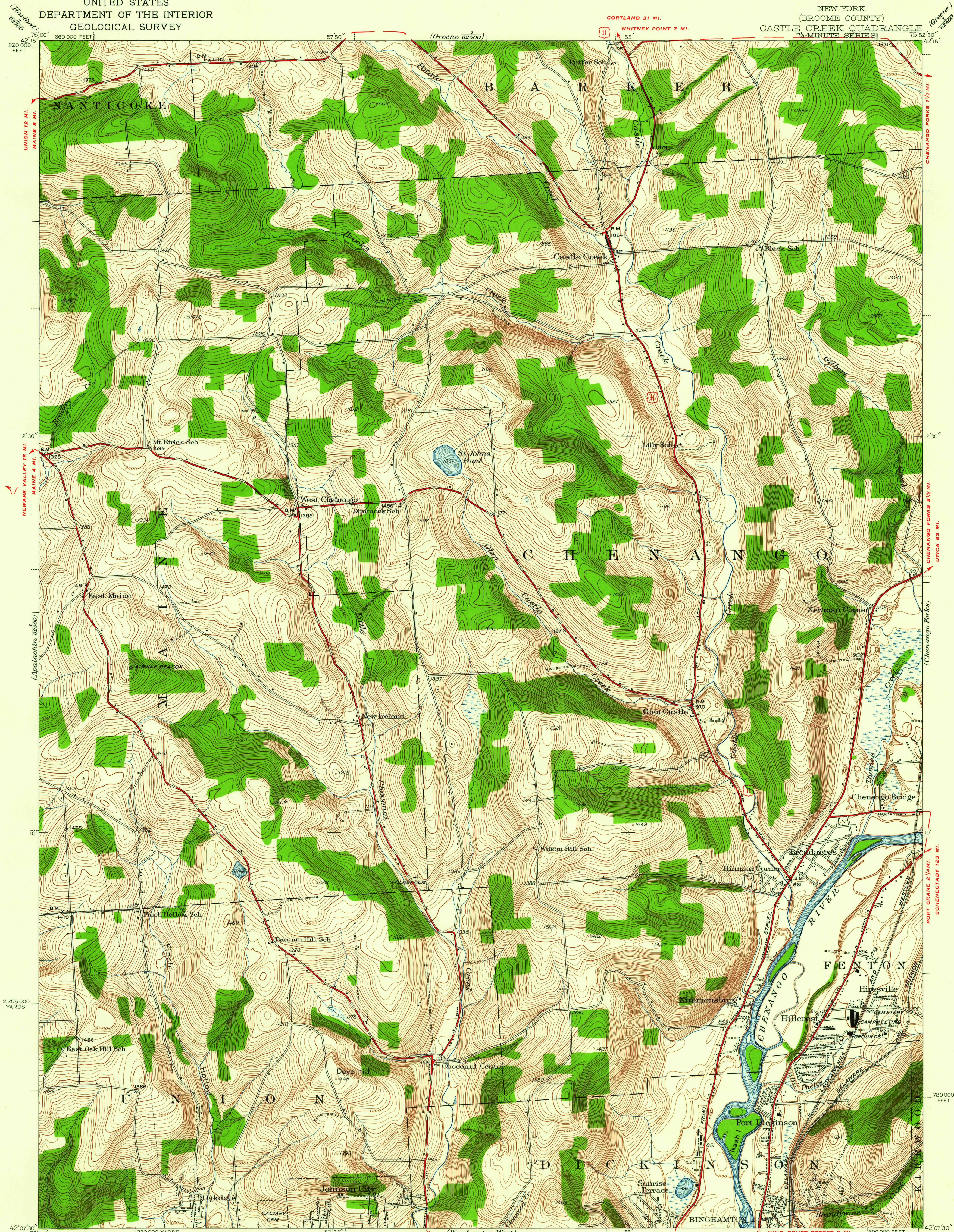
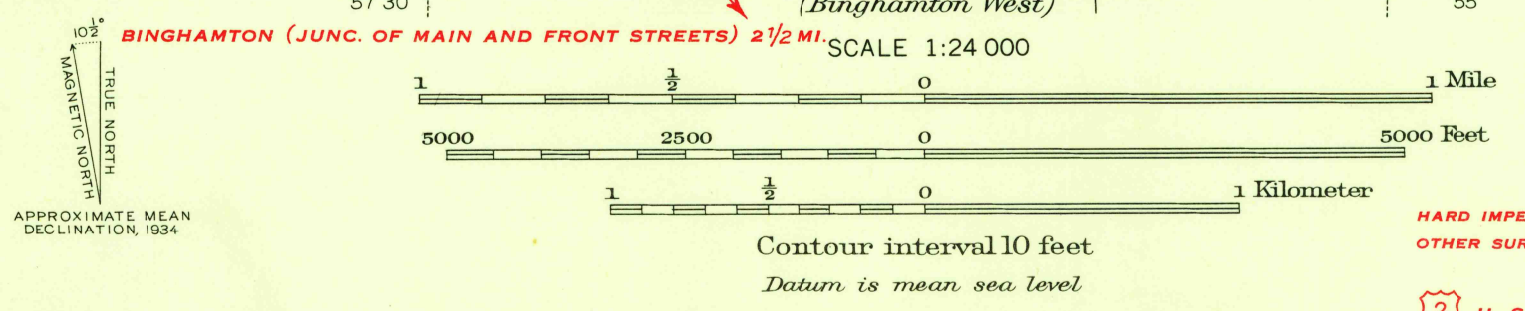


UNITED STATES
DEPARTMENT OF THE INTERIOR
GEOLOGICAL SURVEY

NEW YORK
(BROOME COUNTY)
CASTLE CREEK QUADRANGLE
7 1/2-MINUTE SERIES



Topography by H.R. Kilmer and J.L. Watkins
Surveyed in 1934



INTERIOR—GEOLOGICAL SURVEY, WASHINGTON, D. C.—1960
MR 1841
Polyconic projection. North American datum
5000 yard grid based on U.S. zone system, A
10000 foot grid based on New York (Central)
rectangular coordinate system

ROUTES USUALLY TRAVELED
HARD IMPERVIOUS SURFACES
OTHER SURFACE IMPROVEMENTS
② U. S. ROUTE
③ STATE ROUTE
Historical File
Topographic Division

CASTLE CREEK, N.Y.
Edition of 1942
N4207.5-W7552.5/7.5

FOR SALE BY U. S. GEOLOGICAL SURVEY, WASHINGTON 25, D. C.
A FOLDER DESCRIBING TOPOGRAPHIC MAPS AND SYMBOLS IS AVAILABLE ON REQUEST

U.S.G.S.
FILE COPY
TOPOGRAPHIC DIVISION

APR - 4 1960