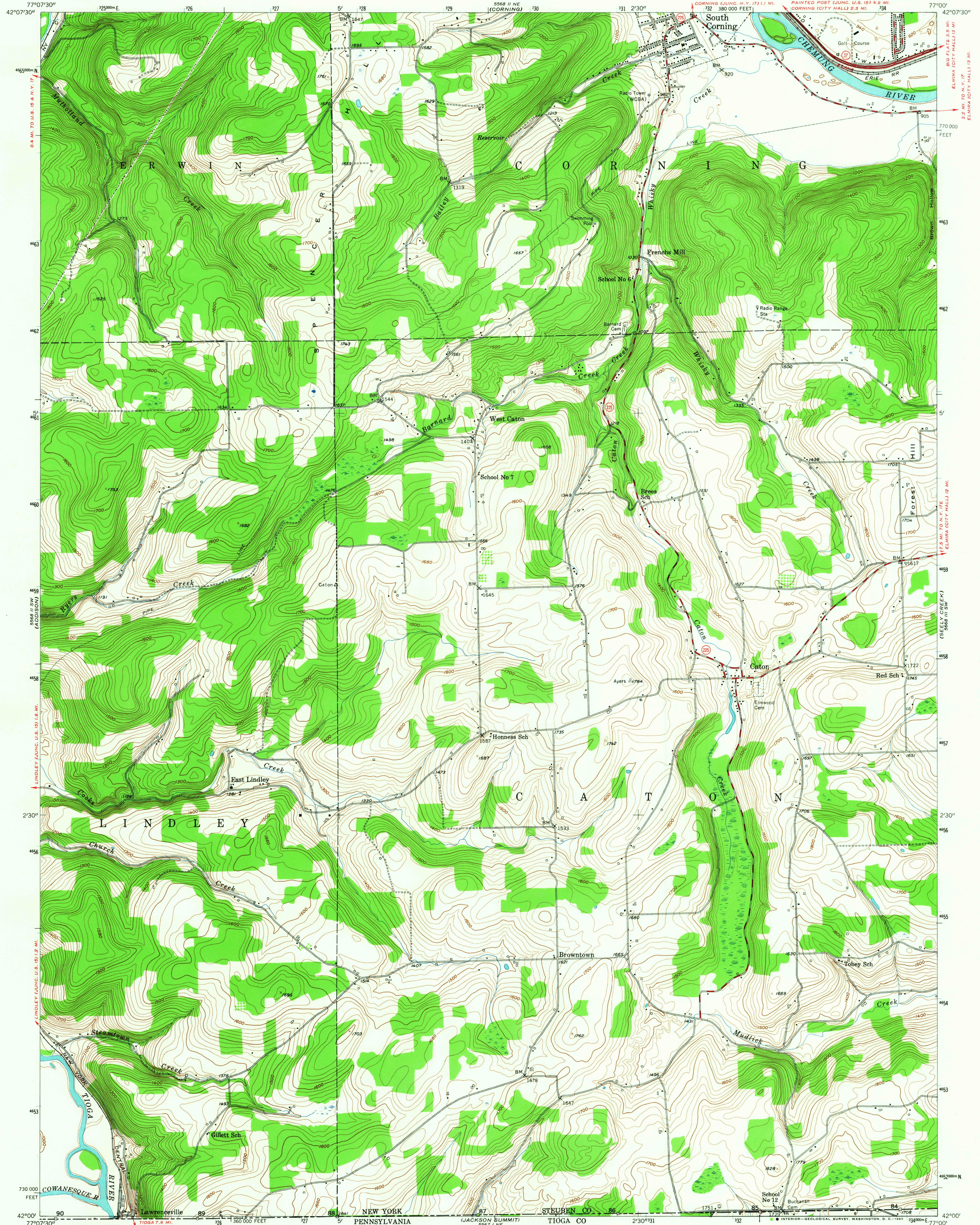


UNITED STATES  
DEPARTMENT OF THE INTERIOR  
GEOLOGICAL SURVEY

CATON QUADRANGLE  
NEW YORK-PENNSYLVANIA  
7.5 MINUTE SERIES (TOPOGRAPHIC)  
SE 1/4 CORNING 15' QUADRANGLE



Mapped, edited, and published by the Geological Survey

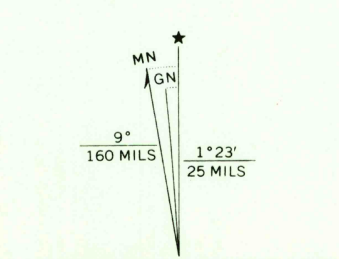
Control by USGS and USC&GS

Topography from aerial photographs by stereophotogrammetric methods. Aerial photographs taken 1952. Field check 1953

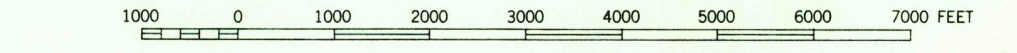
Polyconic projection. 1927 North American datum

10,000-foot grid based on New York coordinate system, central zone

1000-meter Universal Transverse Mercator grid ticks, zone 18, shown in blue



SCALE 1:24000



CONTOUR INTERVAL 20 FEET

DATUM IS MEAN SEA LEVEL

THIS MAP COMPLIES WITH NATIONAL MAP ACCURACY STANDARDS  
FOR SALE BY U. S. GEOLOGICAL SURVEY, WASHINGTON, D. C. 20242  
A FOLDER DESCRIBING TOPOGRAPHIC MAPS AND SYMBOLS IS AVAILABLE ON REQUEST

USGS  
Historical File  
Topographic Division



ROAD CLASSIFICATION  
Heavy-duty 4 LANE 6 LANE Light-duty  
Medium-duty 4 LANE 6 LANE Unimproved dirt  
U. S. Route State Route

U.S.G.S.  
FILE COPY  
TOPOGRAPHIC DIVISION

CATON, N.Y.—PA.

SE 1/4 CORNING 15' QUADRANGLE

N 4200—W 7700/7.5

1953

AMS 5568 II SE—SERIES V821

NOV 2 1965

2750