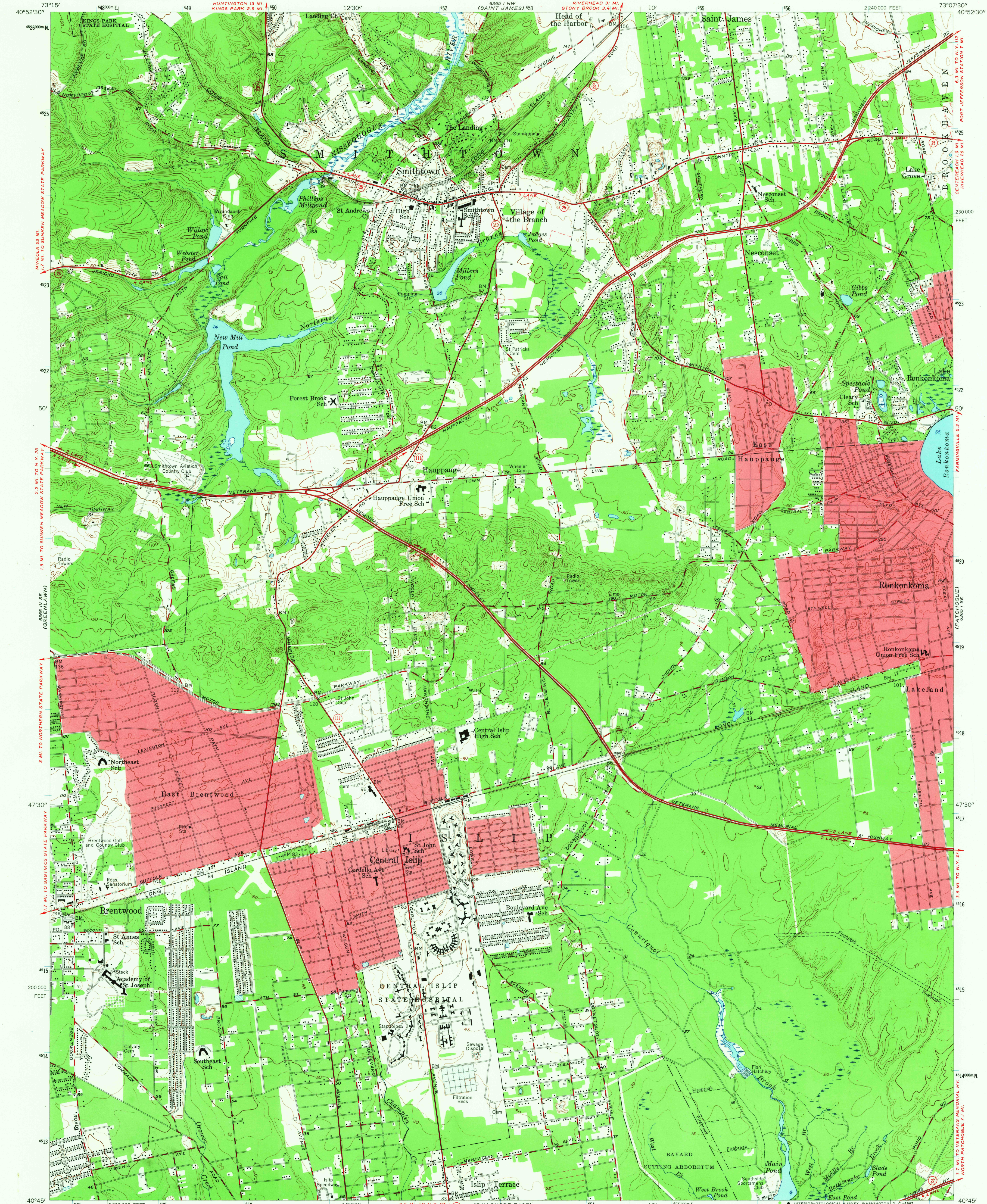
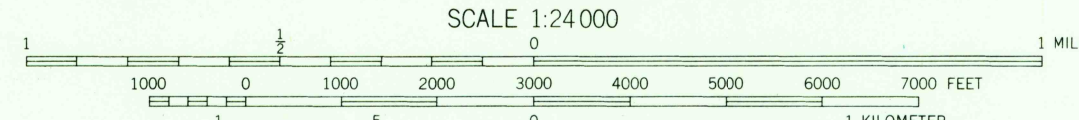
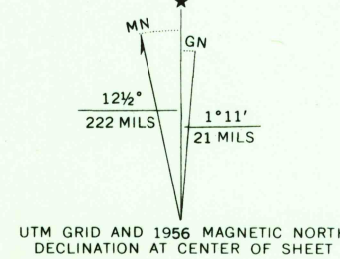


UNITED STATES
DEPARTMENT OF THE INTERIOR
GEOLOGICAL SURVEY

CENTRAL ISLIP QUADRANGLE
NEW YORK-SUFFOLK CO.
7.5 MINUTE SERIES (TOPOGRAPHIC)
SW/4 SETAUKET 15' QUADRANGLE

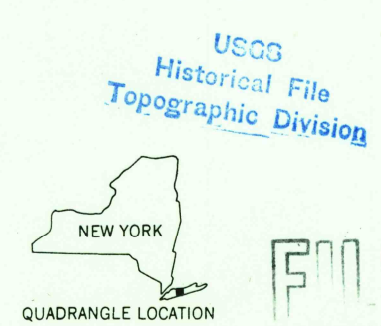


Mapped, edited, and published by the Geological Survey
Control by USGS and USC&GS
Topography from aerial photographs by Kelsh plotter and
by planimeter surveys 1956. Aerial photographs taken 1954
Polyconic projection. 1927 North American datum
10,000-foot grid based on New York coordinate system,
Long Island zone. 1,000-meter Universal Transverse
Mercator grid ticks, zone 18, shown in blue
Red tint indicates areas in which only landmark
buildings are shown
Fine red dashed lines indicate selected fence and field lines
visible on aerial photographs. This information is unchecked



CONTOUR INTERVAL 10 FEET
DOTTED LINES REPRESENT 5-FOOT CONTOURS
DATUM IS MEAN SEA LEVEL

THIS MAP COMPLIES WITH NATIONAL MAP ACCURACY STANDARDS
FOR SALE BY U.S. GEOLOGICAL SURVEY, WASHINGTON, D.C. 20242
A FOLDER DESCRIBING TOPOGRAPHIC MAPS AND SYMBOLS IS AVAILABLE ON REQUEST



ROAD CLASSIFICATION
Heavy-duty ——— Light-duty ———
Medium-duty ——— Unimproved dirt ———
State Route ———

U.S.G.S.
TOPOGRAPHIC DIVISION

CENTRAL ISLIP, N. Y.
SW/4 SETAUKET 15' QUADRANGLE
N 4045—W 7307.5/7.5

1956
AMS 6365 1 SW—SERIES V821