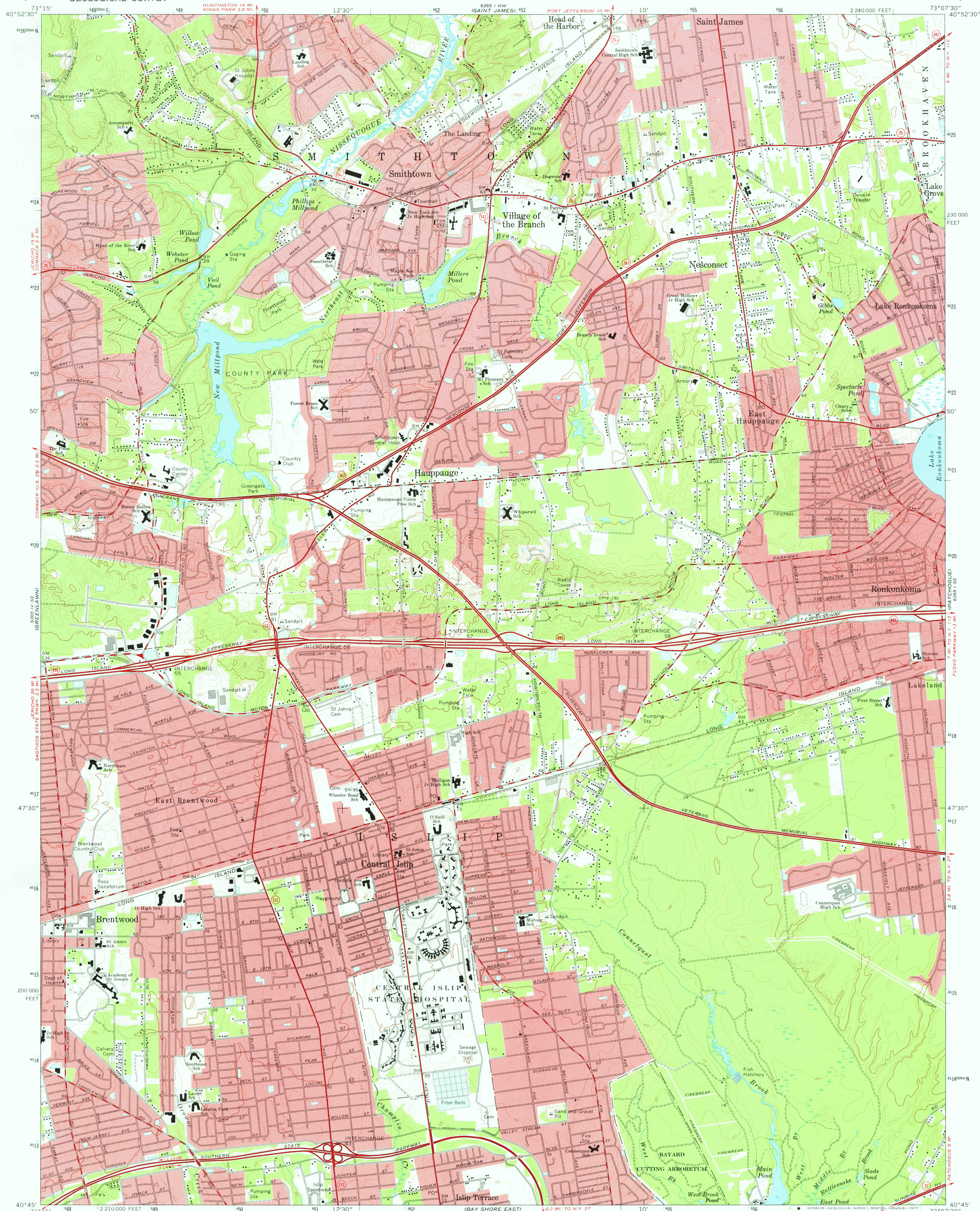
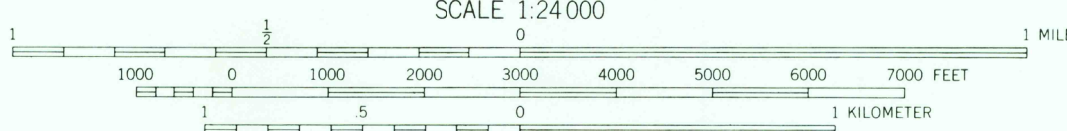


UNITED STATES
DEPARTMENT OF THE INTERIOR
GEOLOGICAL SURVEY

CENTRAL ISLIP QUADRANGLE
NEW YORK—SUFFOLK CO.
7.5 MINUTE SERIES (TOPOGRAPHIC)



HEMPSTEAD 18 MI.
Mapped, edited, and published by the Geological Survey
Revised in cooperation with New York Department of Transportation
Control by USGS and USC&GS
Topography by photogrammetric methods from aerial photographs
taken 1954. Field checked 1956. Revised from aerial photographs
taken 1966. Field checked 1967
Polyconic projection. 1927 North American datum
10,000-foot grid based on New York coordinate system, Long Island zone
1000-meter Universal Transverse Mercator grid ticks,
zone 18, shown in blue
Red tint indicates areas in which only landmark buildings are shown



CONTOUR INTERVAL 10 FEET
DOTTED LINES REPRESENT 5-FOOT CONTOURS
NATIONAL GEODETIC VERTICAL DATUM OF 1929

THIS MAP COMPLIES WITH NATIONAL MAP ACCURACY STANDARDS
FOR SALE BY U.S. GEOLOGICAL SURVEY, RESTON, VIRGINIA 22092
A FOLDER DESCRIBING TOPOGRAPHIC MAPS AND SYMBOLS IS AVAILABLE ON REQUEST

ROAD CLASSIFICATION
Heavy-duty ——— Light-duty ———
Medium-duty ——— Unimproved dirt ———
State Route ———



CENTRAL ISLIP, N. Y.

N4045—W7307.5/7.5
1967
AMS 6365 1 SW—SERIES V821

USGS
Historical File
Topographic Division

MAR 15 1977
5350