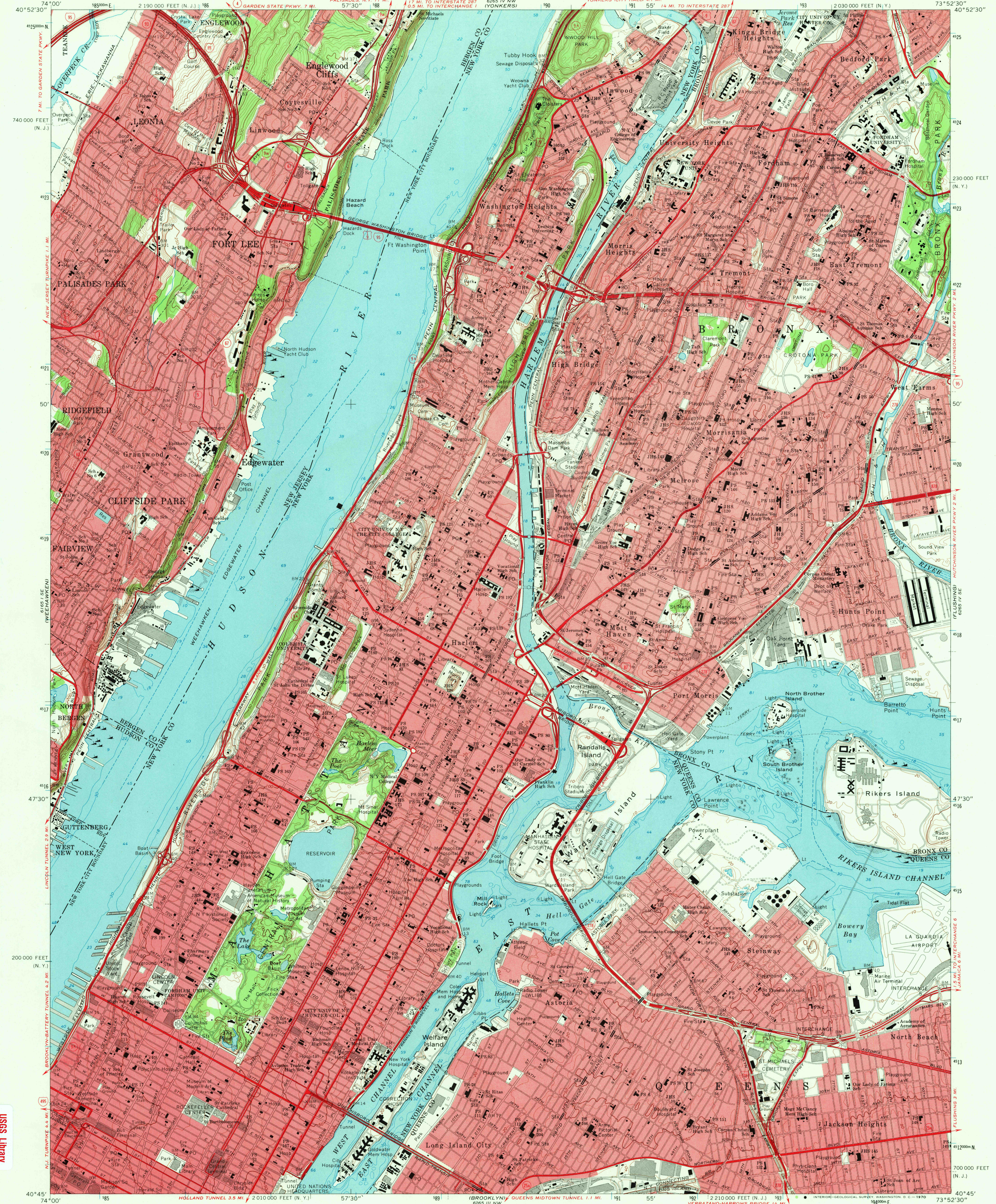


UNITED STATES
DEPARTMENT OF THE INTERIOR
GEOLOGICAL SURVEY

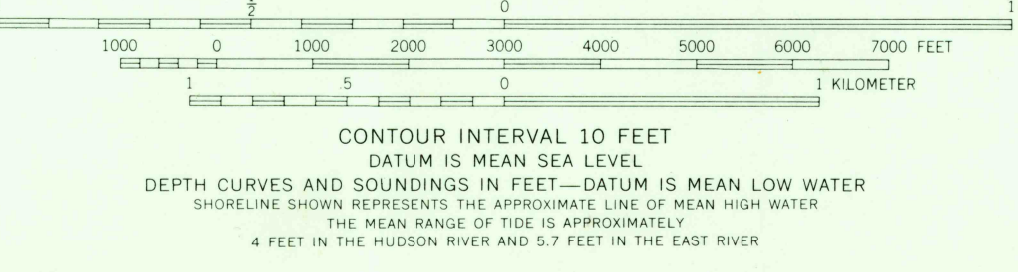
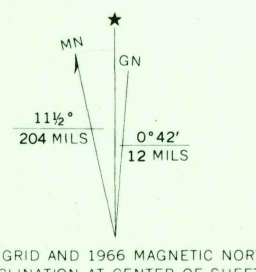
CENTRAL PARK QUADRANGLE
NEW YORK-NEW JERSEY
7.5 MINUTE SERIES (TOPOGRAPHIC)
SW/4 HARLEM 15 QUADRANGLE



Mapped, edited, and published by the Geological Survey
Revised in cooperation with New York
Department of Transportation

Control by USGS, USC&GS, and New Jersey Geodetic Survey
Planimetry by photogrammetric methods and from USC&GS Charts T-4567,
T-5089, T-5264, T-5278, T-5448, T-5449, T-5451, T-5452, T-5453, T-5458,
and T-5778. Topography by photogrammetric methods from aerial photographs
taken 1954 and planimetric surveys 1956
Revised from aerial photographs taken 1966. Field checked 1966
Selected hydrographic data compiled from USC&GS Charts 226, 744, 745,
746, and 747 (1966). This information is not intended for navigational purposes

Polyconic projection. 1927 North American datum
10,000-foot grids based on New York coordinate system, Long Island zone,
and New Jersey coordinate system
1000-meter Universal Transverse Mercator grid ticks, zone 18, shown in blue
Red tint indicates areas in which only landmark buildings are shown



THIS MAP COMPLIES WITH NATIONAL MAP ACCURACY STANDARDS
FOR SALE BY U.S. GEOLOGICAL SURVEY, WASHINGTON, D. C. 20242
A FOLDER DESCRIBING TOPOGRAPHIC MAPS AND SYMBOLS IS AVAILABLE ON REQUEST

USGS
Historical File
Topographic Division



U.S.G.S.

FILE COPY
TOPOGRAPHIC DIVISION

ROAD CLASSIFICATION
Heavy-duty ——— Light-duty ———
Medium-duty ——— Unimproved dirt ———
Interstate Route U.S. Route State Route

CENTRAL PARK, N.Y.-N.J.
SW/4 HARLEM 15 QUADRANGLE
N4045-W7352.5/7.5

1966
AMS 6265 IV SW-SERIES V821

JAN 23 1970