

5770 I NW
(NEW HAVEN)

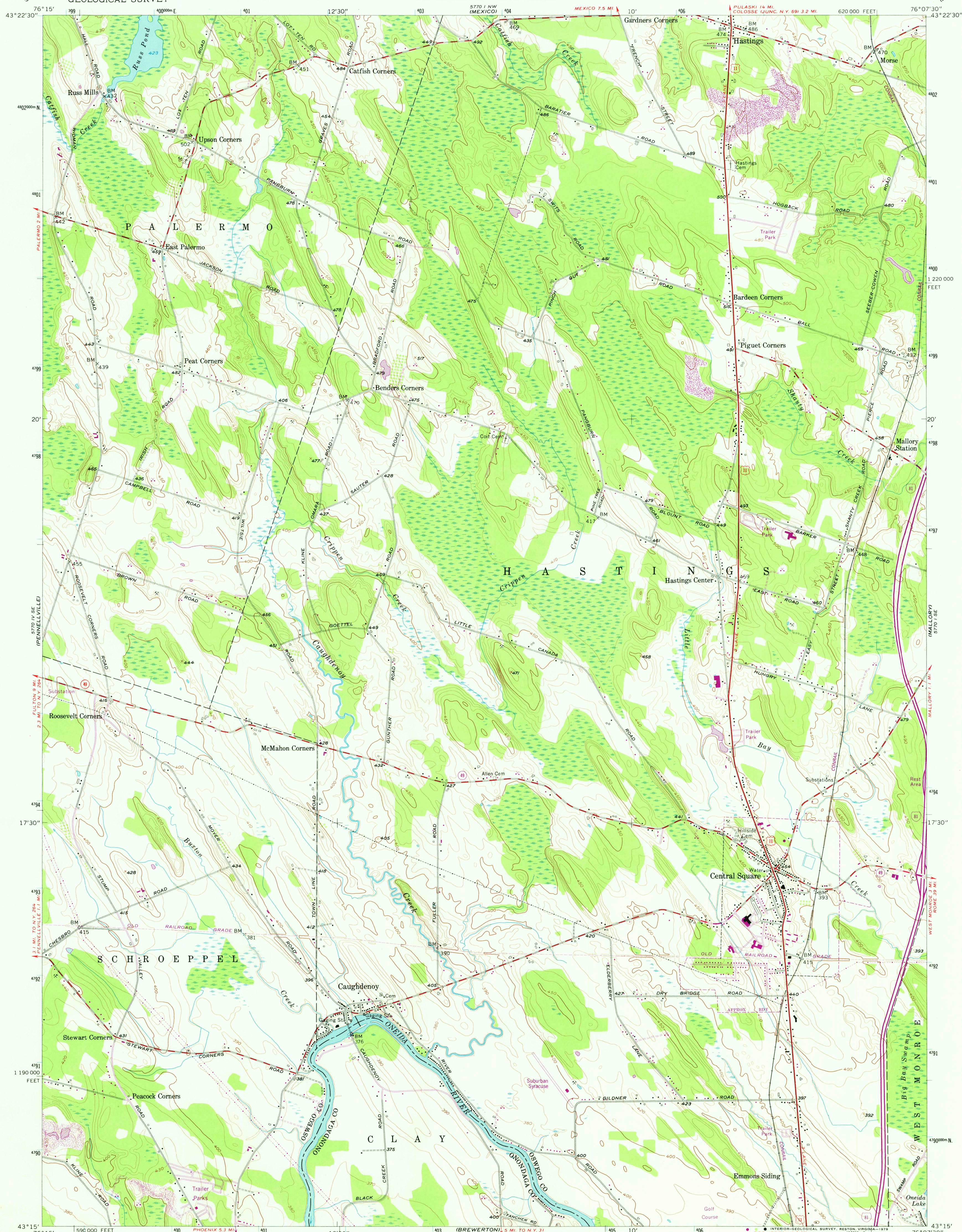
UNITED STATES
DEPARTMENT OF THE INTERIOR
GEOLOGICAL SURVEY



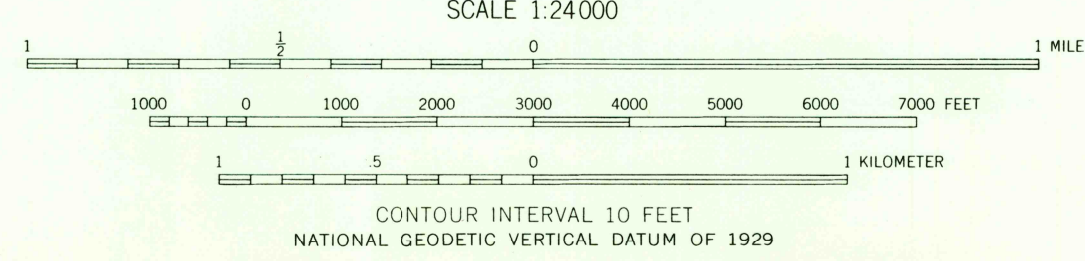
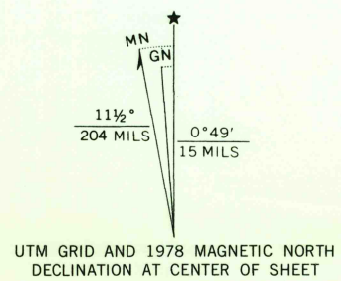
STATE OF NEW YORK
DEPARTMENT OF PUBLIC WORKS

CENTRAL SQUARE QUADRANGLE
NEW YORK
7.5 MINUTE SERIES (TOPOGRAPHIC)

5770 NE
(LOWWAY)



Mapped, edited, and published by the Geological Survey
Control by USGS, USC&GS, and TVA
Culture and drainage in part compiled by Corps of Engineers,
Dept. of the Army, from aerial photographs taken 1942
Topography by planetable surveys 1956
Polyconic projection. 1927 North American datum
10,000-foot grid based on New York coordinate system,
central zone
1000-meter Universal Transverse Mercator grid ticks,
zone 18, shown in blue
Revisions shown in purple and woodland compiled from
aerial photographs taken 1976 and other source data.
This information not field checked. Map edited 1978



ROAD CLASSIFICATION

Primary highway, all weather, hard surface	Light-duty road, all weather, improved surface
Secondary highway, all weather, hard surface	Unimproved road, fair or dry weather
Interstate Route	U.S. Route
	State Route

CENTRAL SQUARE, N.Y.
N4315—W7607.5/7.5

USGS
Historical File
Topographic Division

1956
PHOTOREVISED 1978
AMS 5770 I SW—SERIES W821

APR 26 1979

THIS MAP COMPLIES WITH NATIONAL MAP ACCURACY STANDARDS
FOR SALE BY U.S. GEOLOGICAL SURVEY, RESTON, VIRGINIA 22092
A FOLDER DESCRIBING TOPOGRAPHIC MAPS AND SYMBOLS IS AVAILABLE ON REQUEST