

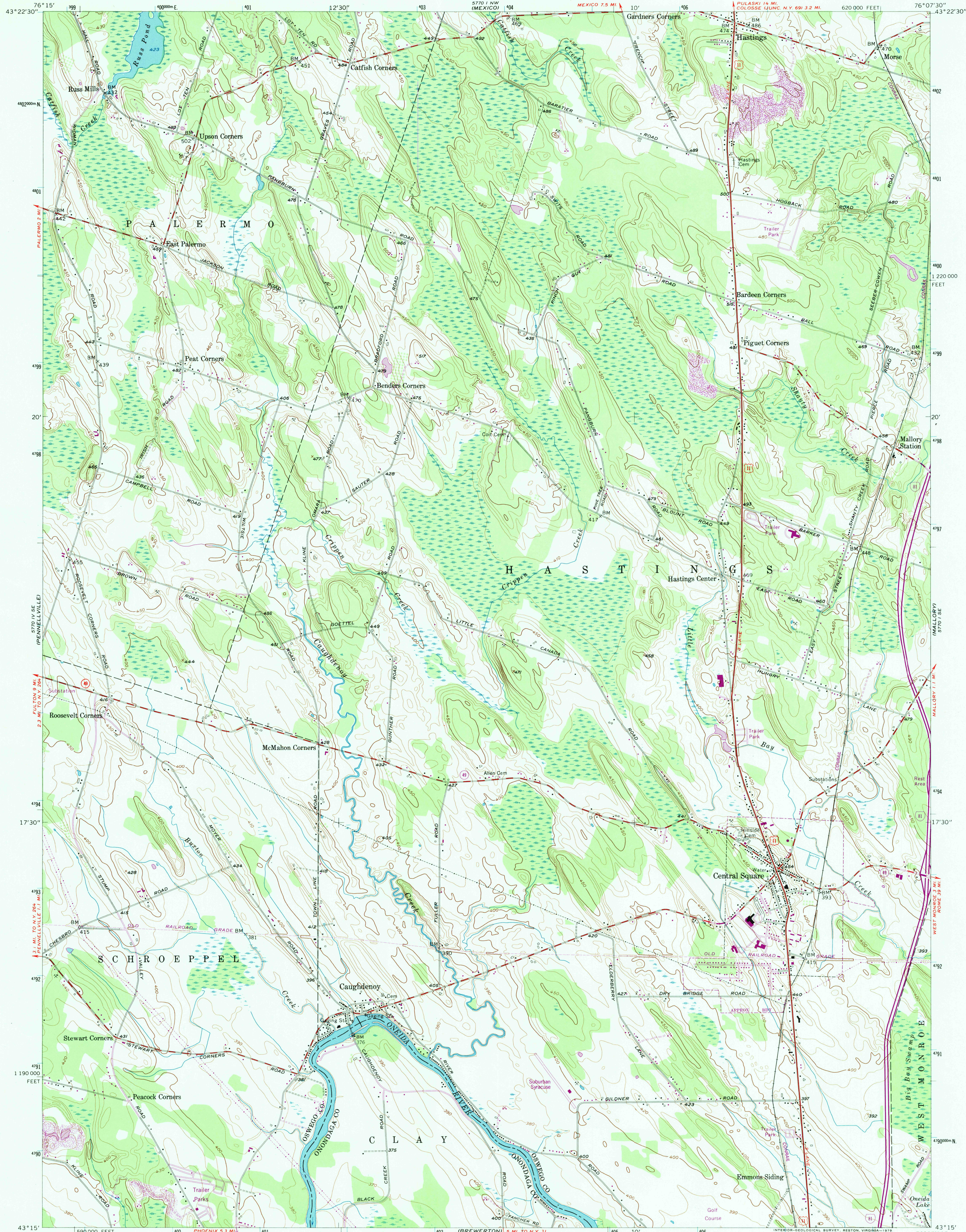
5770 1 NW
(NEW HAVEN)

UNITED STATES
DEPARTMENT OF THE INTERIOR
GEOLOGICAL SURVEY

STATE OF NEW YORK
DEPARTMENT OF PUBLIC WORKS

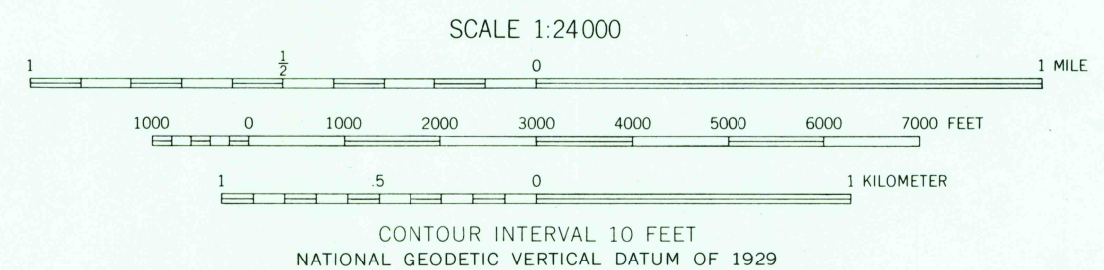
CENTRAL SQUARE QUADRANGLE
NEW YORK
7.5 MINUTE SERIES (TOPOGRAPHIC)

5770 NE
(BUDAWAY)



Mapped, edited, and published by the Geological Survey
Control by USGS, USC&GS, and TVA
Culture and drainage in part compiled by Corps of Engineers,
Dept. of the Army, from aerial photographs taken 1942
Topography by planetable surveys 1956
Polyconic projection. 1927 North American datum
10,000-foot grid based on New York coordinate system,
central zone
1000-meter Universal Transverse Mercator grid ticks,
zone 18, shown in blue
Revisions shown in purple and woodland compiled from
aerial photographs taken 1976 and other source data.
This information not field checked. Map edited 1978

UTM GRID AND 1978 MAGNETIC NORTH
DECLINATION AT CENTER OF SHEET



ROAD CLASSIFICATION
Primary highway, all weather, hard surface
Secondary highway, all weather, hard surface
Light-duty road, all weather, improved surface
Unimproved road, fair or dry hard surface
weather
Interstate Route
U. S. Route
State Route

CENTRAL SQUARE, N. Y.

N4315—W7607.5/7.5

1956
PHOTOREVISED 1978
AMS 5770 1 SW—SERIES W821

USGS AND HISTORICAL
MAP ARCHIVES
JAN 3 1997
REC'D FILE COPY

