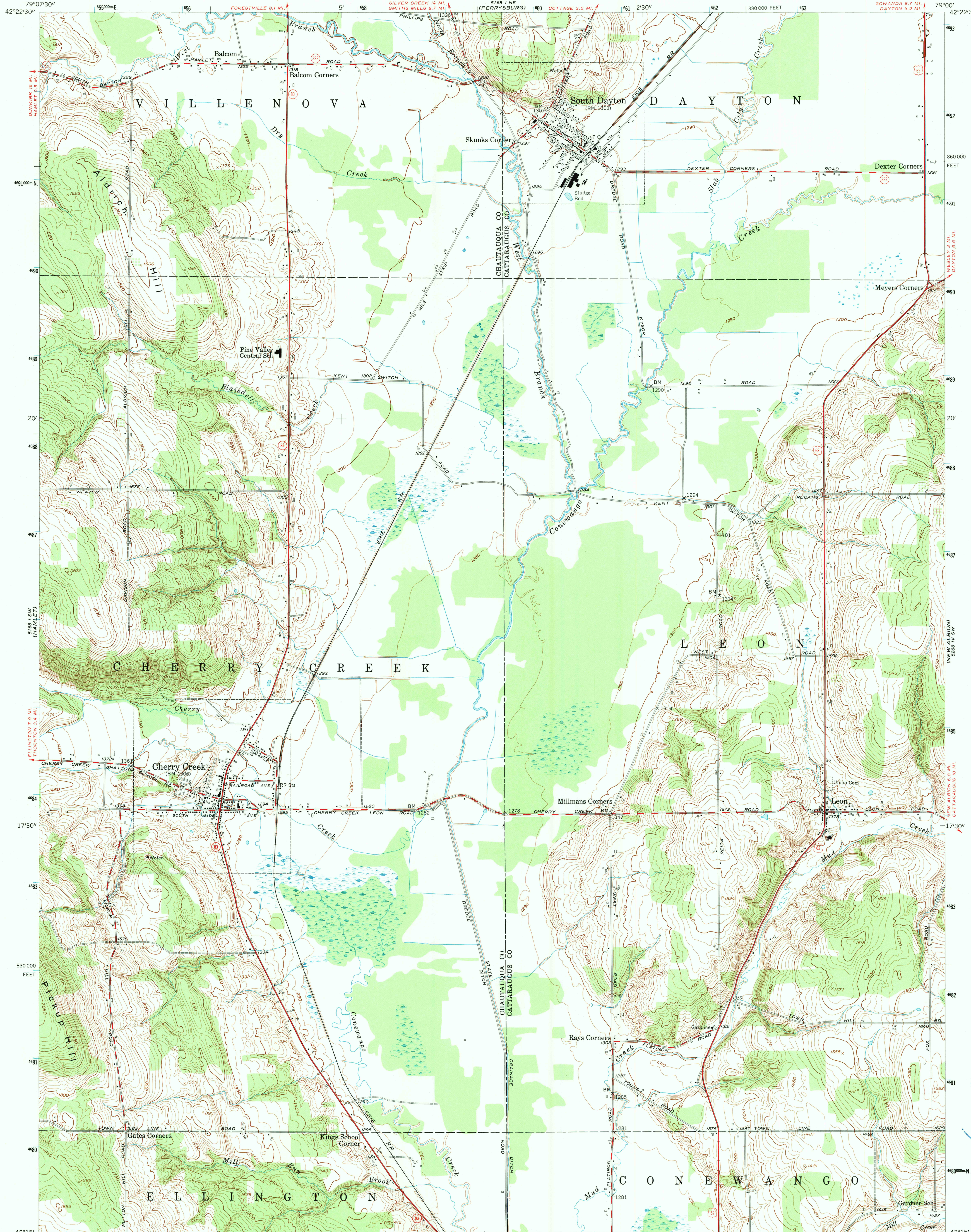
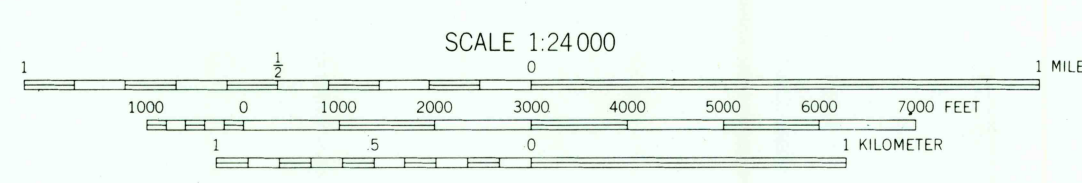
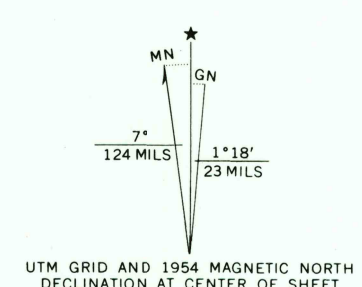


UNITED STATES
DEPARTMENT OF THE INTERIOR
GEOLOGICAL SURVEY

CHERRY CREEK QUADRANGLE
NEW YORK
7.5 MINUTE SERIES (TOPOGRAPHIC)
SE/4 CHERRY CREEK 15' QUADRANGLE



Mapped, edited, and published by the Geological Survey
Control by USGS
Topography from aerial photographs by photogrammetric
methods. Aerial photographs taken 1953. Field check 1954
Polyconic projection. 1927 North American datum
10,000-foot grid based on New York coordinate system,
west zone
Unchecked elevations are shown in brown
1000-meter Universal Transverse Mercator grid ticks,
zone 17, shown in blue
Map photoinspected 1976
No major culture or drainage changes observed



CONTOUR INTERVAL 10 FEET
DATUM IS MEAN SEA LEVEL

THIS MAP COMPLIES WITH NATIONAL MAP ACCURACY STANDARDS
FOR SALE BY U.S. GEOLOGICAL SURVEY
DENVER, COLORADO 80225, OR RESTON, VIRGINIA 22092
A FOLDER DESCRIBING TOPOGRAPHIC MAPS AND SYMBOLS IS AVAILABLE ON REQUEST



ROAD CLASSIFICATION
Heavy-duty ——— Light-duty ———
Medium-duty ——— Unimproved dirt ———
U.S. Route ——— State Route ———

CHERRY CREEK, N. Y.
SE/4 CHERRY CREEK 15' QUADRANGLE
N 4215—W 7900/7.5
1954
PHOTOINSPECTED 1976
AMS 5168 I SE—SERIES V821

USGS NMD HISTORICAL MAP
MAY 13 1991
REC'D FILE COPY