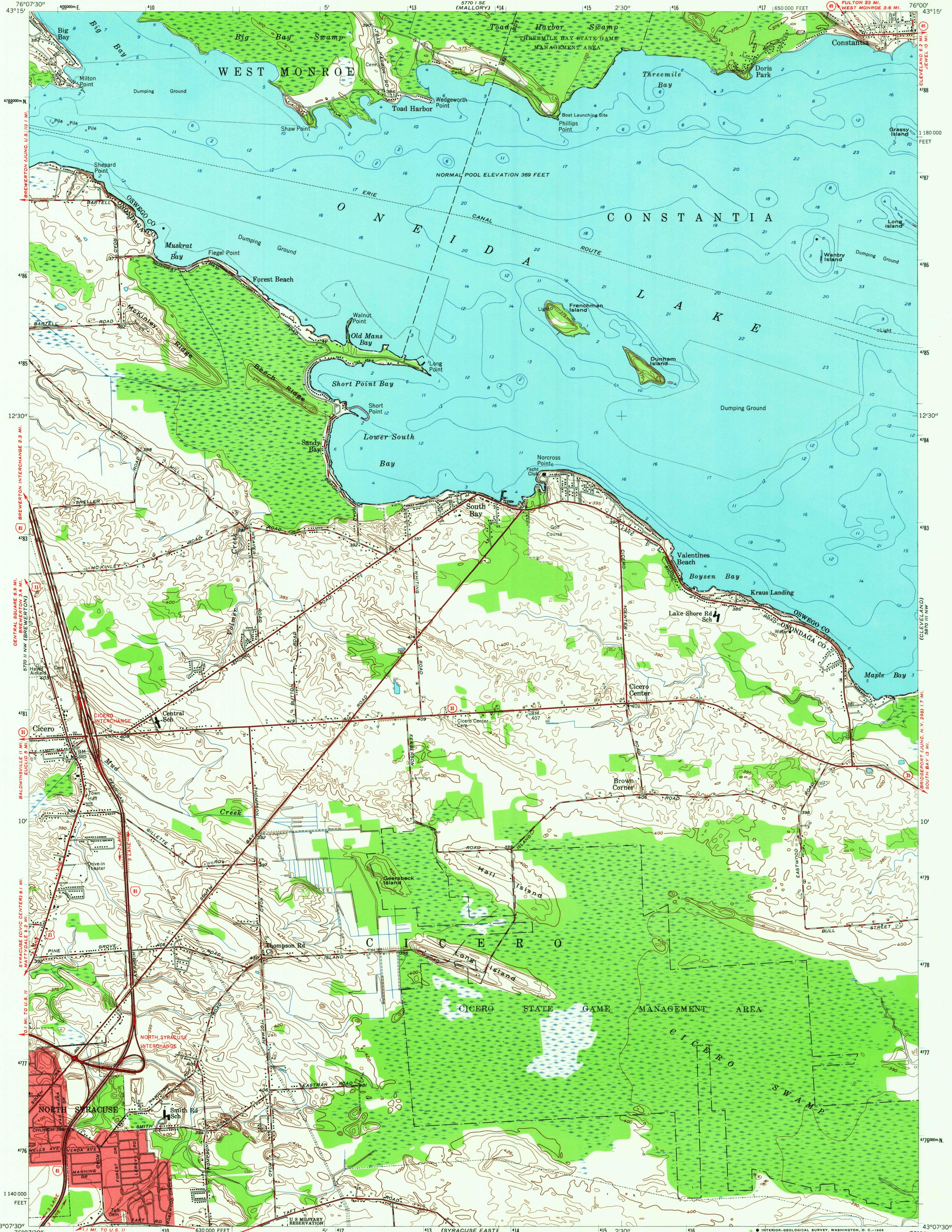


UNITED STATES  
DEPARTMENT OF THE INTERIOR  
GEOLOGICAL SURVEY

STATE OF NEW YORK  
DEPARTMENT OF PUBLIC WORKS

CICERO QUADRANGLE  
NEW YORK  
7.5 MINUTE SERIES (TOPOGRAPHIC)



Mapped, edited, and published by the Geological Survey

Control by USGS and USC&GS

Topography by planetable surveys 1940

Revised 1957

Hydrography compiled from U. S. Lake Survey chart 184 (1956)

Polyconic projection. 1927 North American datum

10,000-foot grid based on New York coordinate system,

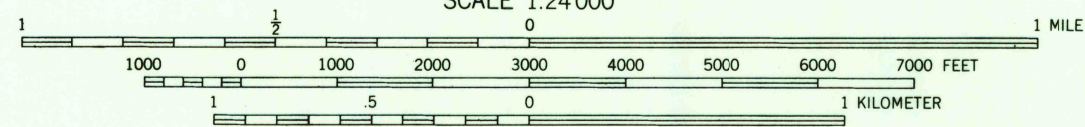
central zone

1000-meter Universal Transverse Mercator grid ticks,

zone 18, shown in blue

Red tint indicates areas in which only

landmark buildings are shown



CONTOUR INTERVAL 5 FEET

DATUM IS MEAN SEA LEVEL

DEPTH CURVES AND SOUNDINGS IN FEET—DATUM IS NORMAL POOL ELEVATION 369 FEET

THIS MAP COMPLIES WITH NATIONAL MAP ACCURACY STANDARDS

FOR SALE BY U. S. GEOLOGICAL SURVEY, WASHINGTON, D. C. 20242

A FOLDER DESCRIBING TOPOGRAPHIC MAPS AND SYMBOLS IS AVAILABLE ON REQUEST

USGS  
Historical File  
Topographic Division



QUADRANGLE LOCATION

ROAD CLASSIFICATION

- Heavy-duty ——— Light-duty ———
- Medium-duty ——— Unimproved dirt ———
- Interstate Route U. S. Route State Route

U.S.G.S.

FILE COPY  
TOPOGRAPHIC DIVISION

CICERO, N. Y.

N4307.5—W76007.5

1957

AMS 5770 II NE—SERIES Y821

5645  
MAR 15 1966