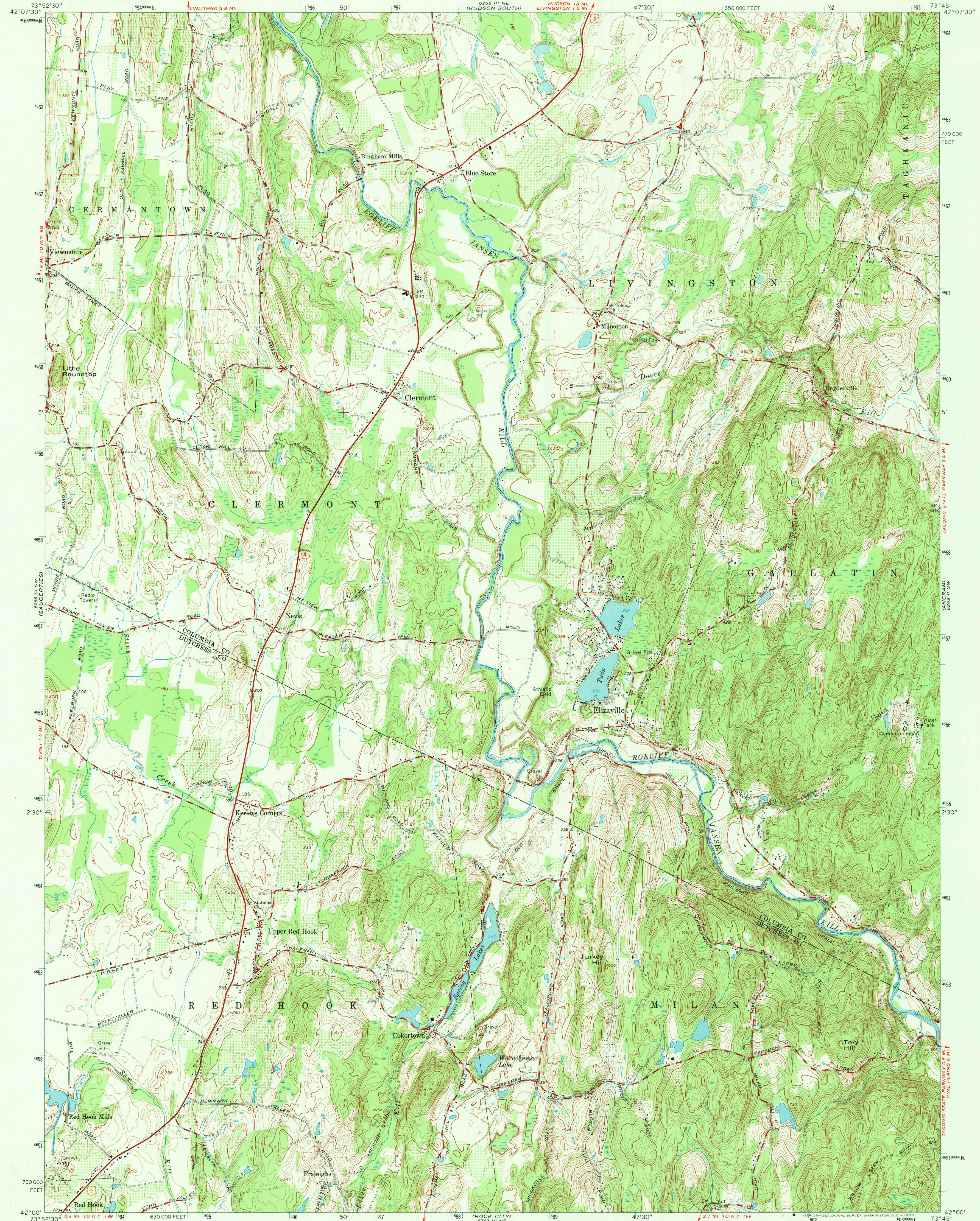


6268 III NW
(CLAYBROOK)

UNITED STATES
DEPARTMENT OF THE INTERIOR
GEOLOGICAL SURVEY

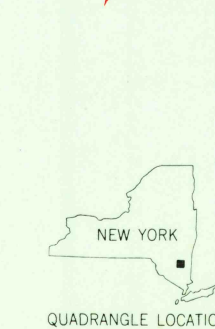
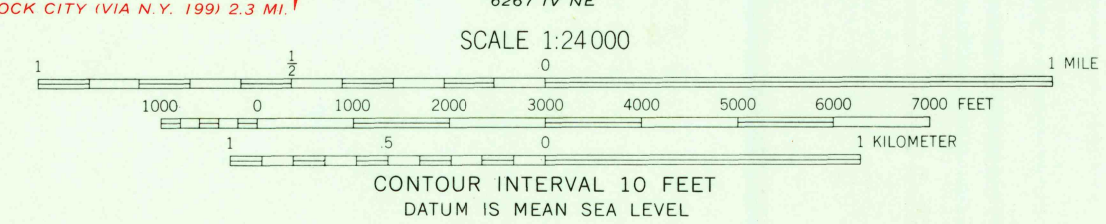
CLERMONT QUADRANGLE
NEW YORK
7.5 MINUTE SERIES (TOPOGRAPHIC)
SE/4 CATSKILL 15' QUADRANGLE

6268 I NW
(CLAYBROOK)



Mapped, edited, and published by the Geological Survey
Control by USGS and USC&GS
Topography by photogrammetric methods from aerial
photographs taken 1962. Field checked 1963
Polyconic projection. 1927 North American datum
10,000-foot grid based on New York coordinate system, east zone
1000-meter Universal Transverse Mercator grid ticks,
zone 18, shown in blue
Fine red dashed lines indicate selected fence and field lines where
generally visible on aerial photographs. This information is unchecked

UTM GRID AND 1963 MAGNETIC NORTH
DECLINATION AT CENTER OF SHEET



ROAD CLASSIFICATION
Heavy-duty ——— Light-duty ———
Medium-duty ——— Unimproved dirt ———
U.S. Route ———

13 AUG 1973
CLERMONT, N. Y.
SE/4 CATSKILL 15' QUADRANGLE
N4200—W7345/7.5

1963
AMS 6268 III SE—SERIES V821

THIS MAP COMPLIES WITH NATIONAL MAP ACCURACY STANDARDS
FOR SALE BY U.S. GEOLOGICAL SURVEY, WASHINGTON, D. C. 20242
A FOLDER DESCRIBING TOPOGRAPHIC MAPS AND SYMBOLS IS AVAILABLE ON REQUEST

4445