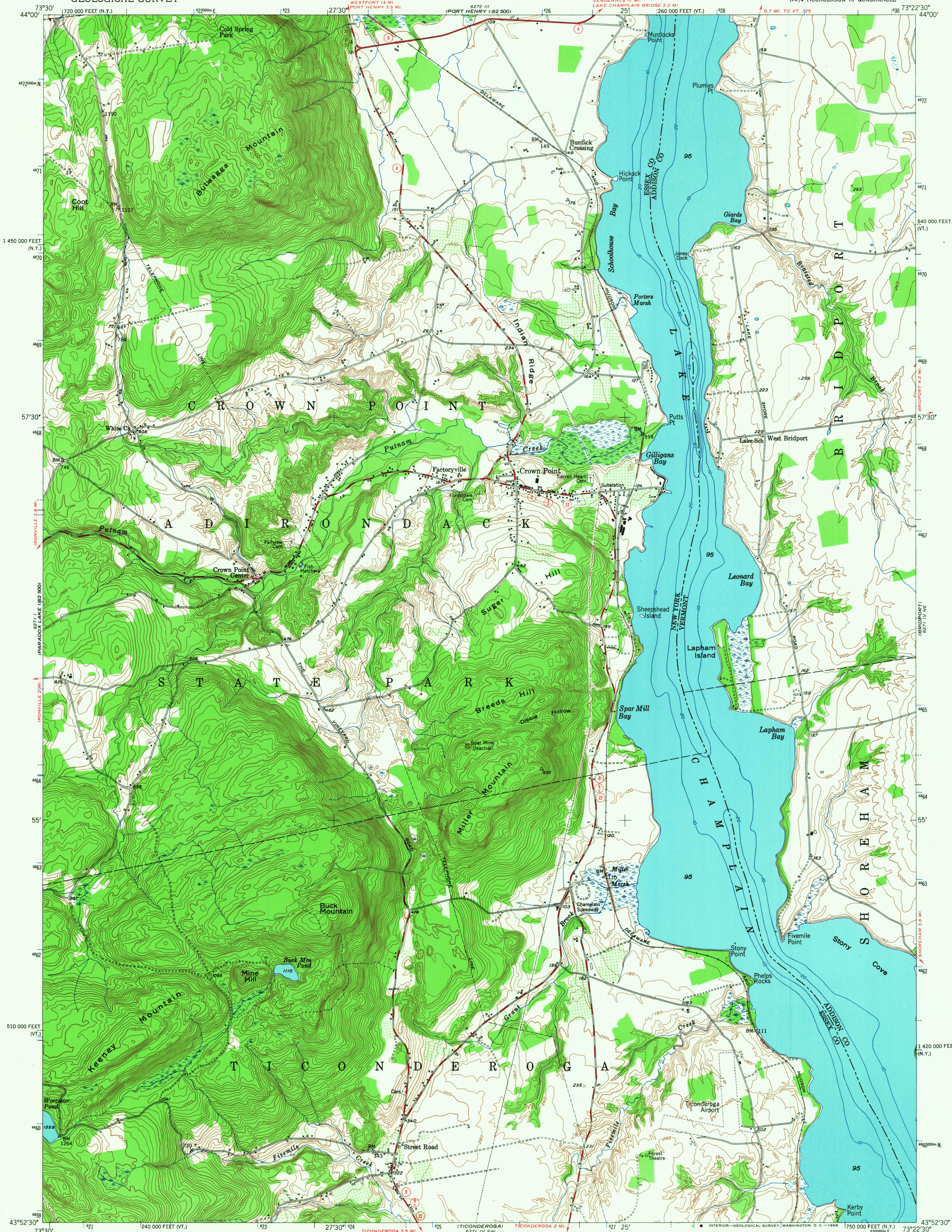
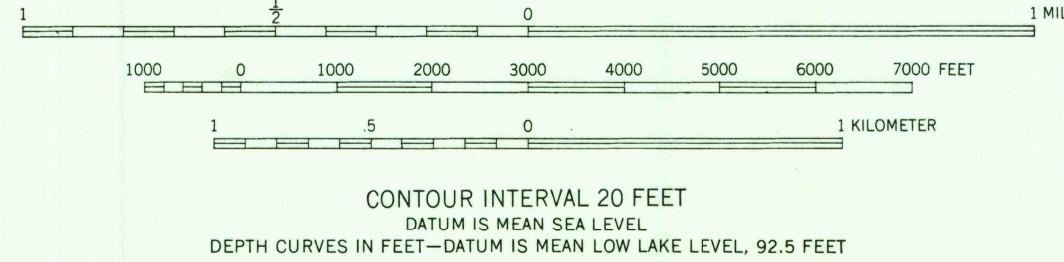
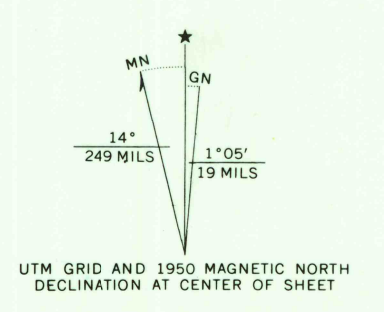


UNITED STATES
DEPARTMENT OF THE INTERIOR
GEOLOGICAL SURVEY

CROWN POINT QUADRANGLE
NEW YORK-VERMONT
7.5 MINUTE SERIES (TOPOGRAPHIC)
NW 1/4 TICONDEROGA 15' QUADRANGLE



Mapped, edited, and published by the Geological Survey
Control by USGS and USC&GS
Topography from aerial photographs by multiplex methods
Aerial photographs taken 1942. Field check 1949-1950
Polyconic projection. 1927 North American datum
10,000-foot grids based on New York coordinate system,
east zone, and Vermont coordinate system
1000-meter Universal Transverse Mercator grid ticks,
zone 18, shown in blue
The area shown west of Lake Champlain is in
the Adirondack State Park



USGS
Historical File
Topographic Division
U.S.G.S.
FILE COPY
TOPOGRAPHIC DIVISION

ROAD CLASSIFICATION
Medium-duty ——— Light-duty ———
Unimproved dirt ———
State Route

CROWN POINT, N.Y.-VT.
NW 1/4 TICONDEROGA 15' QUADRANGLE
N4352.5—W7322.5/7.5
1950

AMS 6371 IV NW—SERIES V821

THIS MAP COMPLIES WITH NATIONAL MAP ACCURACY STANDARDS
FOR SALE BY U.S. GEOLOGICAL SURVEY, WASHINGTON, D. C. 20242
A FOLDER DESCRIBING TOPOGRAPHIC MAPS AND SYMBOLS IS AVAILABLE ON REQUEST

334)
FEB 20 1968